

Sparking

Early Learning & Connection

with mobile technology



Disclosure

The views expressed in this presentation are those of the speaker and not, necessarily, of the Help Me Grow National Center or Connecticut Children's Medical Center.

Further, the presence of a commercial vendor at a Help Me Grow National Center event, and the presentation of or by any vendor of any information regarding any specific commercial products, process, or service by trade name, trademark, manufacturer, or otherwise, does not constitute or imply Help Me Grow National's endorsement, recommendation, or favoring of such item or organization. Any such material presented by or for any vendor, in any format, without limitation, is for informational purposes only. Any potential customer of any vendor, who is present at a Help Me Grow National Center event, is expected to conduct their own due diligence and assessment of the vendor, product, or services as appropriate for their needs.

Introductions



Julia Levy
Executive Director,
Sparkler Learning

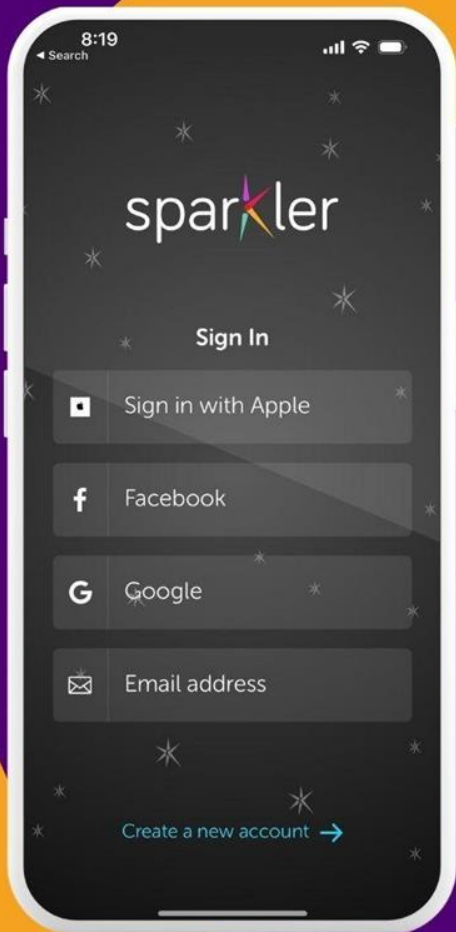


Luz M. Rivera
Program Manager,
CT Office of Early Childhood



Amanda Heath
Director,
211 Child Development



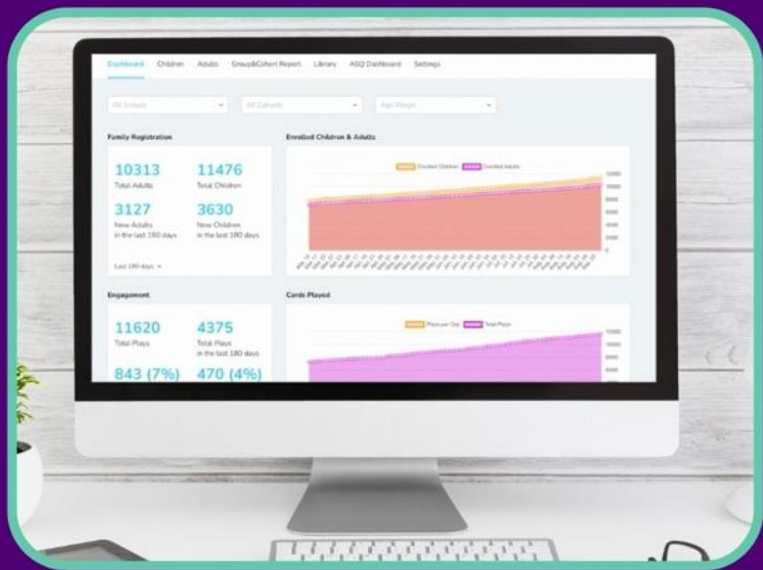


Spark Early Learning!

Sparkler's mobile app is for families. It provides mobile, on-the-go access to:

- Developmental screening
- 2,000+ play-based learning activities
- Parent Tips
- Connection, answers, and support

Support and Engage Families



Sparkler's dashboard is for providers. It is a web-based system that enables providers to monitor and engage with families and download data & reports. This includes:

- Child and parent registrations
- Screening results
- Follow-up recommendations
- Family-facing reports
- Engagement with play/parenting tips
- Photos of play/learning

USING TECH TO TAP INTO A NETWORK OF SCREENING, PROMOTION, REFERRAL, LINKAGE & SUPPORT



REFERRALS IF NEEDED/WANTED:

- Birth to Three
- Children & Youth with Special Health Care Needs
- Preschool Special Education
- Home Visiting
- Family Support & Advocacy
- Mental Health

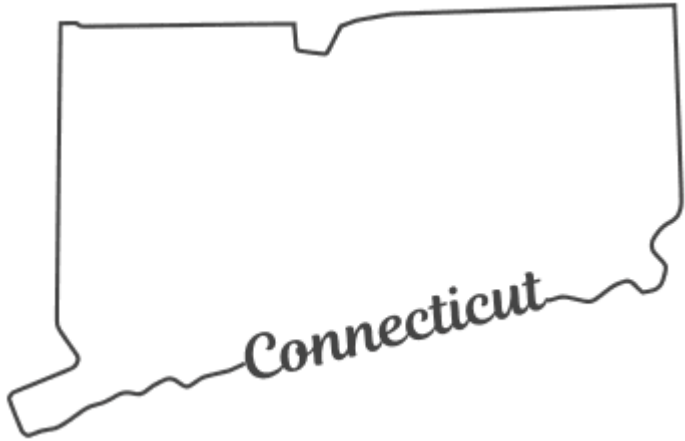


- Developmental Screening
- Play-based learning
- Coaching/connection
- Ongoing developmental monitoring



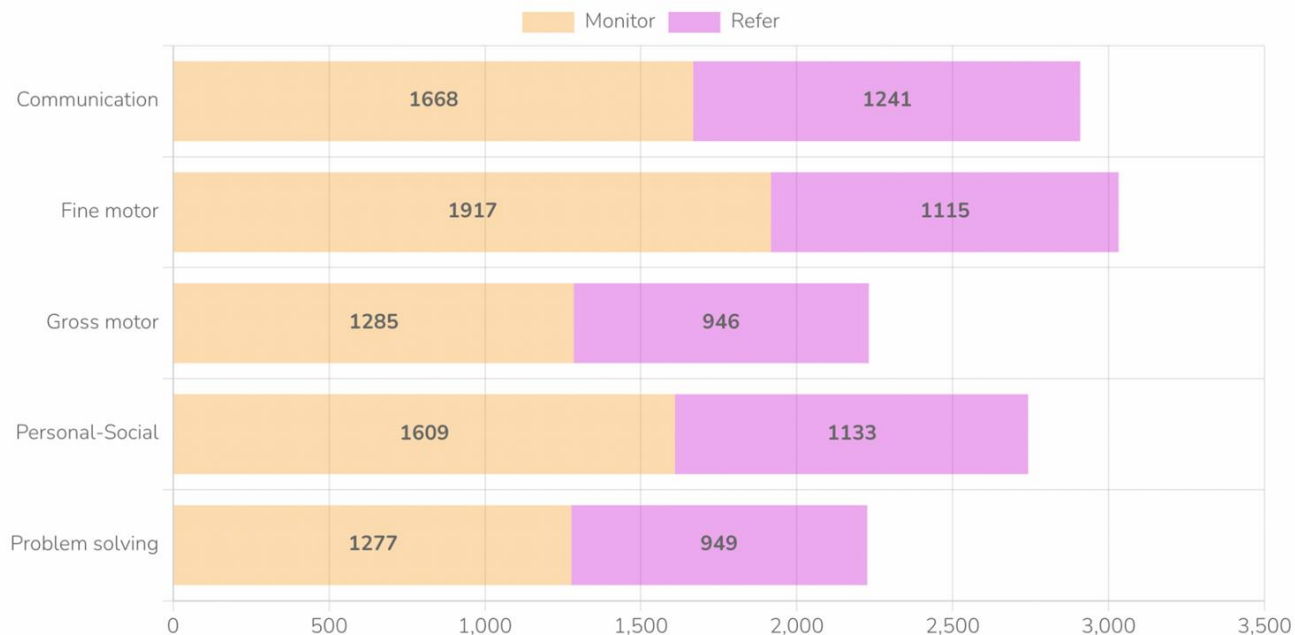
SUPPORT FROM 211 CARE COORDINATORS & LOCAL PROVIDERS

EXPANDING ACCESS & EQUITY IN THE STATE OF CONNECTICUT



- 100+ communities (including 500+ programs)
- 1,500+ local providers trained, including preschool educators, family resource center staff, home visitors, early intervention specialists...
- 19,000+ children

HELPING MORE FAMILIES ACCESS SUPPORT ACROSS THE STATE



- 14,815+ ASQ-3s completed
- 9,759 ASQ:SEs completed
- Helping to support individual families
- Helping to ID big trends and build systems of support

CONNECTICUT WAS THE BIRTHPLACE OF
HELP ME GROW IN THE 1990S



Today we're going to talk about how we've used mobile technology to MODERNIZE all 4 components of HMG in Connecticut to provide better services to families with young children.

But first...a little history...

TIMELINE OF HMG IN CONNECTICUT

Help Me Grow Launched

Help Me Grow launched in Connecticut as a pilot in Hartford (originally called ChildServ) in the late 1990s.

1997

Central Access Point (211) Launched

Help Me Grow CT became a statewide program, part of the Children's Trust Fund. The parent access point: 211 established.

2002

iPhone born!

The 1st iPhone was introduced in 2007 and 1st Android smartphone was introduced in 2008 -- changing the way many families accessed info and engaged.

2007

Office of Early Childhood Born

Governor Malloy signed Public Act 14-39, establishing the Office of Early childhood to create a cohesive, high quality early childhood system.

2013

Sparkler: Statewide

Sparkler launched statewide in CT to support early childhood systems building in the state,

2021

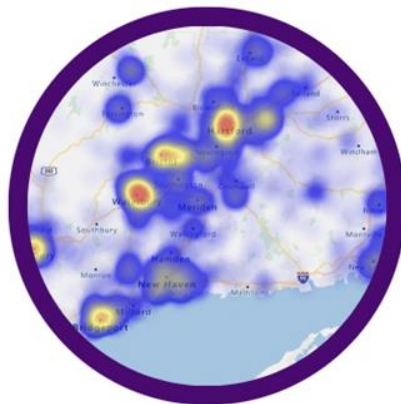
CONNECTING FAMILIES TO KNOWLEDGE & SUPPORT IN CONNECTICUT WITH



The CT Office of Early Childhood rolled out Sparkler Learning statewide in October 2021. This technology-enabled collaboration is helping the state to strengthen its work implementing all four "Core Components" of the Help Me Grow System Model in a MODERN, MOBILE, RESPONSIVE way.



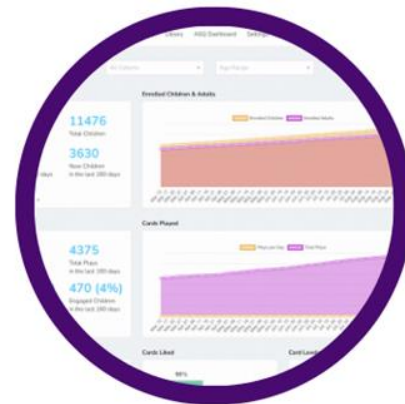
EXPANDING ACCESS



ENGAGING COMMUNITIES & FAMILIES



BUILDING BRIDGES TO HEALTH CARE



USING DATA FOR GOOD



EXPANDING ACCESS



EXPANDING
ACCESS

We are expanding the "centralized access point" by meeting families where they are — on their smartphones and tablets.

- We are expanding access with mobile technology
- We are fostering greater connection
- We are serving more families
- We are increasing screening, support, and referrals

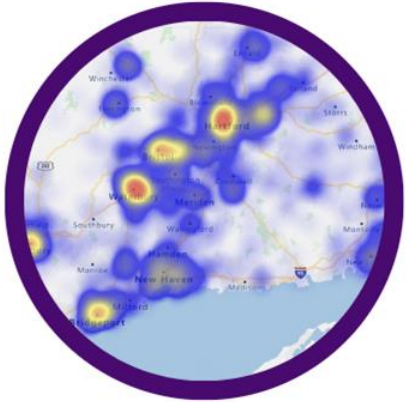


Connecticut Office
of Early Childhood



Help Me Grow
Connecticut

ENGAGING COMMUNITIES & FAMILIES



ENGAGING COMMUNITIES & FAMILIES

We are working closely with communities to provide families with local support — with a backbone of the strong, central system of Help Me Grow Connecticut & 211 Child Development.

- We are engaging local providers
- We are providing support for families
- We are on the ground to support and engage
- We are learning and growing WITH local providers
- We are engaging families through innovative content



BUILDING BRIDGES TO HEALTH CARE



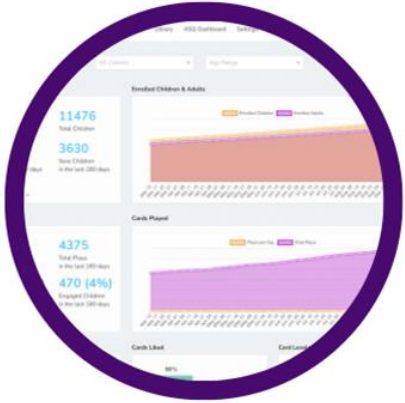
**BUILDING BRIDGES
TO HEALTH CARE**

Sparkler builds bridges, connecting ALL providers serving families with children 0-5. Kids win when doctors, educators, and other providers are collaborating to support early development.

- We are partnering with birthing hospitals
- We are piloting in pediatric practices
- We are a part of training modules for doctors
- We are meeting families where they are



USING DATA FOR GOOD



USING DATA
FOR GOOD

★ We're putting rich data about how children are developing in the hands of people who can use information to help children and families thrive.

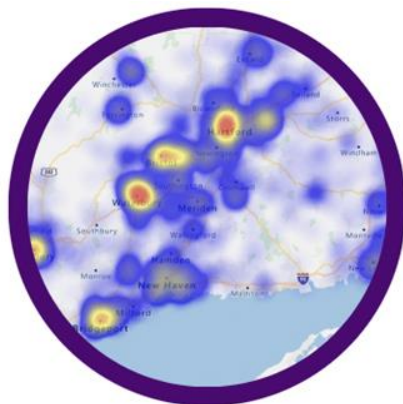
- We are building knowledge among parents
- We are building knowledge at programs and communities
- We are helping to inform statewide and local practice



CONNECTING FAMILIES TO KNOWLEDGE & SUPPORT IN CONNECTICUT WITH



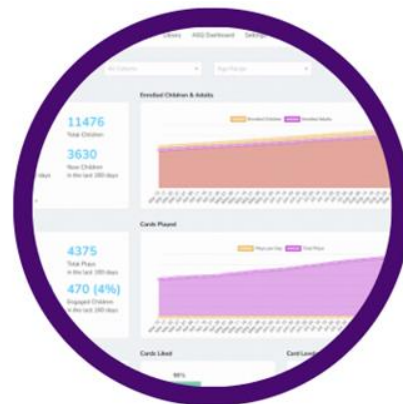
**EXPANDING
ACCESS**



**ENGAGING COMMUNITIES
& FAMILIES**



**BUILDING BRIDGES
TO HEALTH CARE**



**USING DATA
FOR GOOD**



Thank you!

The logo for Sparkler, featuring the word "sparkler" in a white, lowercase, sans-serif font. The letter "k" is stylized with a colorful, multi-pointed starburst shape behind it, transitioning from purple to red to yellow to green.

Questions: We're happy to answer your questions now or in the future!

- Amanda: Amanda.CDI@ctunitedway.org
- Luz: LUZ.RIVERA@ct.gov
- Julia: julia@playsparkler.org



Breakout Rooms



- How can you use technology to increase access and equity?
- How can state agencies partner with nonprofits to better support and connect families with early intervention?
- What are some ways to use people and technology to implement HMG for “today”?
- How can states and cities use new methods to engage families in developmental monitoring, screening, promotion, and support?



Please join us now to reflect and connect on this session in small groups!

1. Exit the session to the home page
2. Click “Community” on top header
3. Select Discussion Rooms from the drop down menu
4. Select the discussion happening right now with our session title

*Each discussion room will include up to six people



HELP ME GROW NATIONAL FORUM WEEK 2023

