



Disclosure

The views expressed in this presentation are those of the speaker and not, necessarily, of the Help Me Grow National Center or Connecticut Children's Medical Center.

Further, the presence of a commercial vendor at a Help Me Grow National Center event, and the presentation of or by any vendor of any information regarding any specific commercial products, process, or service by trade name, trademark, manufacturer, or otherwise, does not constitute or imply Help Me Grow National's endorsement, recommendation, or favoring of such item or organization. Any such material presented by or for any vendor, in any format, without limitation, is for informational purposes only. Any potential customer of any vendor, who is present at a Help Me Grow National Center event, is expected to conduct their own due diligence and assessment of the vendor, product, or services as appropriate for their needs.



Helping New American Families Identify Disabilities Early through Cross-System Partnerships

Presenters



Romina Barros, MD

Chief Developmental Behavioral Pediatrics
NYU Langone Long Island Hospital
CDC Act Early Ambassador NY State



Cynthia Stewart

NYS Office for New Americans
Ramirez June Developmental Disabilities Navigator



**Developmental
Disabilities
Planning Council**



**Department of State
Office for New Americans**



Who Are New Americans?

New Americans are:

- Immigrants
- Lawful Permanent Residents (LPR)
- Naturalized citizens
- Refugees, asylees
- Unauthorized/Undocumented individuals
- All newcomers who live in the U.S.





Learn The Signs. Act Early.

CDC Learn The Signs. Act Early. Campaign

- The CDC's *Learn the Signs. Act Early.* (LTSAE) program was launched in 2004:
 - to improve early identification of children with ASD/DD,
 - to enable children and families to access the services and support they need.
- As part of this program, the Act Early state systems grants focused on the need to improve State capacity and strengthen State and community systems for early identification and coordination of services for children with developmental disabilities.
- To advance these efforts, in 2011, the Act Early Ambassador program established points of contact within participating States to disseminate LTSAE materials within systems and organizations that serve children and their families.



Learn The Signs. Act Early. Mission

- To improve early identification of developmental delays and disabilities, including autism, by increasing parent-engaged developmental monitoring so children and their families can get the early services and support they need.



Learn The Signs. Act Early. Focus.

- *The focus of LTSAE is to engage, educate, and empower parents and other caregivers to monitor milestones* and discuss child's developmental progress between recommended screenings.
- LTSAE complements screening by *engaging those who care for young children in celebrating a child's developmental progress and discussing any concerns.*



Act Early Ambassador Role

Improve early identification of developmental delays and disabilities, including autism, by:

- Promoting the adoption and integration of the CDC’s “Learn the Signs. Act Early” (LTSAE) resources and materials to support developmental monitoring in systems that serve young children and their families.
- Serving as a state or territorial representative of CDC’s national LTSAE program.
- Supporting the work of Act Early Teams and other state/territorial or national initiative to improve early identification of developmental delays and disability.



NYActs Covid-19 Project

- To provide support to early childhood state/territorial programs and systems through the *Act Early Network* to target families most impacted by covid-19, by providing resources and support to promote resiliency for children, families, and communities in your region.
- The project was implemented in all US states and territories.
- Funding from the CDC and overseen by AUCD.



NYActs Goal

- The project was to address needs in the midst of COVID-19 to bolster identification of developmental delays and disabilities, focusing on the 4 steps of early identification:
 - Parent-engaged developmental monitoring
 - Developmental and autism screening
 - Referral
 - Receipt of services
- To provide resources to families to strengthen resiliency by promoting and distributing the relevant tools, materials and programs available through the CDC Act Early.



Partnership with NYS Act Early Ambassador & the Office for New Americans Ramirez June Initiative

- **Partnership formed in response to the COVID-19 Pandemic**
- **Goal:** Increase access for immigrants by
 - Expanding access to developmental awareness information,
 - Removing barriers to identify developmental delays and disabilities early,
 - and increasing connections with disability resources and services.

3 Years of Partnership

Activities:

- Created resources for service providers and immigrant communities.
- Hosted multilingual workshops for families and early childhood education providers.
- Expanded partnership to include early childhood stakeholders who serve immigrant families.
- Collected data to measure the effectiveness of outreach and collaborations.



Department of State
Office for New Americans

New York State Office for New Americans Ramirez June Initiative

September 1, 2023

About NYS ONA



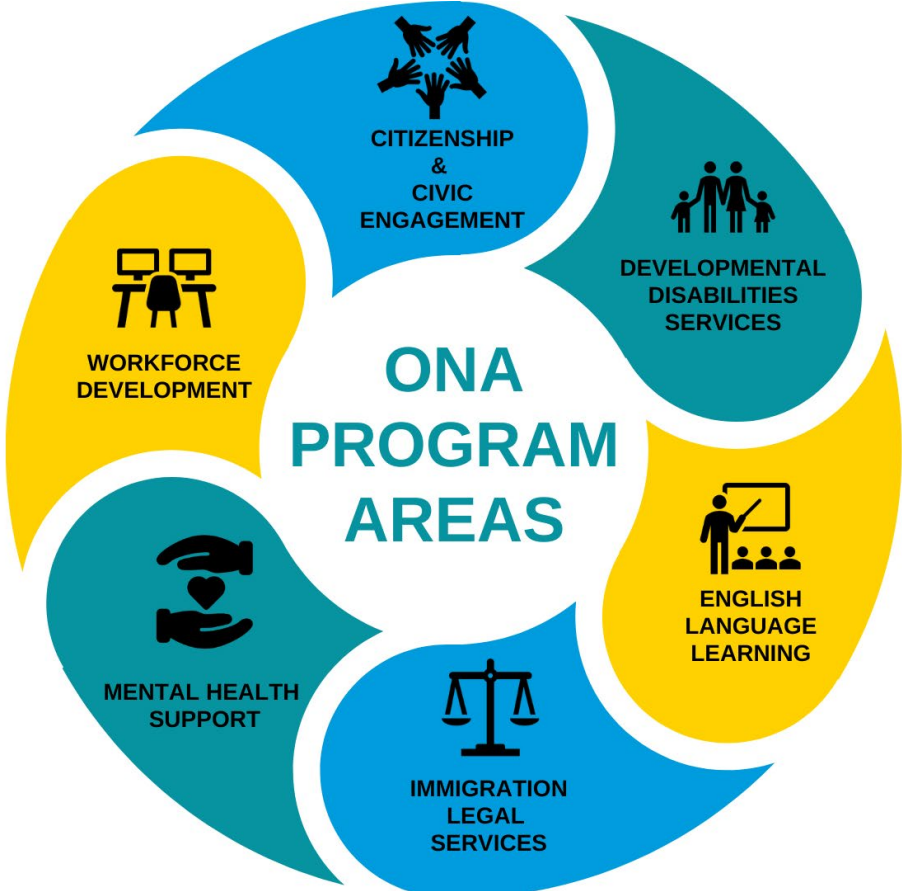
- The New York State Office for New Americans (ONA), founded in 2012, is the nation's first statutorily created immigrant services office.
- ONA assists all new Americans with accessing and navigating a variety of free services and support through its statewide network of community-based providers.



OFFICE OF NEW AMERICANS
STATE NETWORK



ONA Program Areas



Office for New Americans (ONA) Ramirez June Initiative

Connecting new Americans with developmental disabilities with vital resources, information, and services in NYS



<https://dos.ny.gov/ramirez-june-initiative>



**Developmental
Disabilities
Planning Council**



**Department of State
Office for New Americans**

Families who Inspired the Initiative



The Ramírez Family

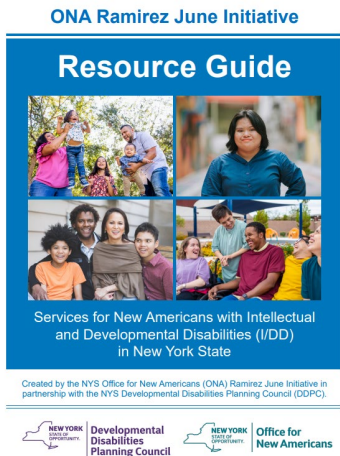


The Family of Siewling (June) Lum



Ramirez June Initiative Activities

1. Cross-system partnerships, collaborations, and technical assistance.
2. Engage immigrant communities and service providers.
3. Create and distribute multilingual resources.
4. Share findings and recommendations with key stakeholders.



Voyage

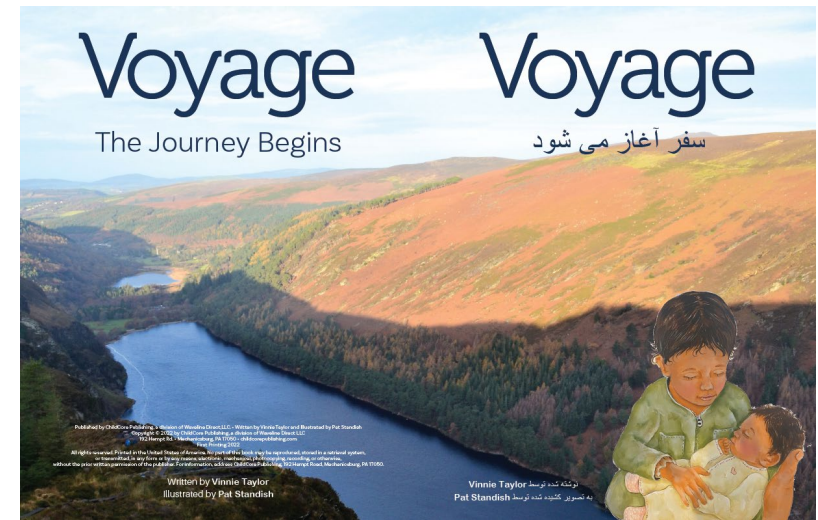
Multilingual Resource Book for New American Families



Ukrainian



Arabic



Dari

What's in Voyage?

18 MONTHS DOCTOR VISIT

VIZIT 18 MWA KAY DOKTÈ

It's time for developmental screening! At 18 months, your child is due for general developmental screening and an autism screening, as recommended for all children by the American Academy of Pediatrics. Ask the doctor about your child's developmental screening.

Se moman pou fè tès depistaj devlopman! A 18 mwa, pitit ou a bezwen fè yon tès despitaaj devlopman jeneral ak yon tès depistaj otis, jan Akademi Pedyatri Ameriken mande sa pou tout timoun. Poze doktè a kesyon sou tès depistaj devlopman pitit ou a.

Reason for Visit: (Rezon Vizit la) _____

Date: (Dat) _____ Weight: (Pwa) _____ Height: (Wotè) _____

Inoculation: (Vaksinasyon) _____

Remarks: (Remak) _____

MILESTONES – 18 MONTHS

Walks alone · Eats with spoon · Points to get your attention
 Can use a crayon to scribble
 Follows one step verbal commands
 Knows what ordinary objects are for: telephone, brush, spoon
 Shakes head and says “no” · Plays simple pretend

- Multilingual information on child development (2 months – 5 years) and the early identification of disabilities.
- Provides ages for developmental screenings (starting at 9 months), autism screenings (starting at 18 months), Well-Child Visits, developmental milestones, activities to promote child development, and disability resources in NYS.



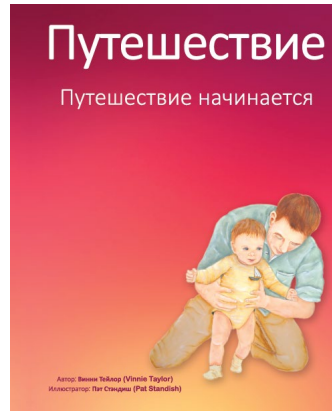
Voyage Was Translated into 10 Languages



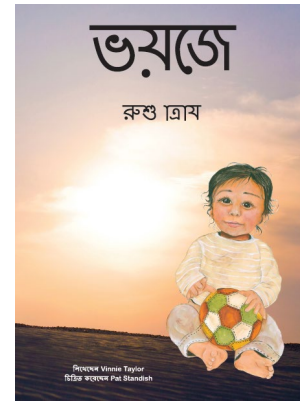
Spanish



Simplified Chinese



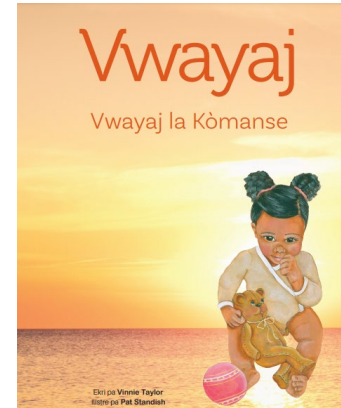
Russian



Bengali



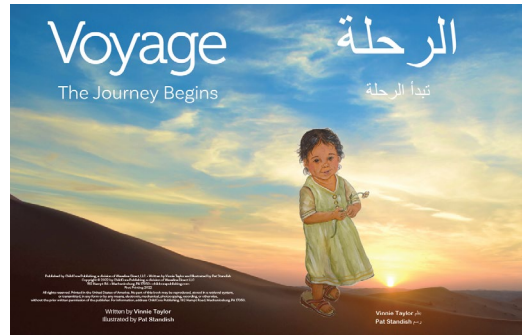
Korean



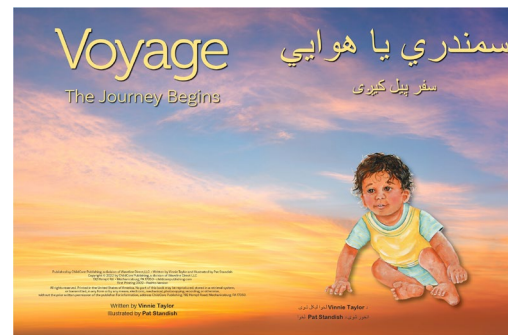
Haitian Creole



Ukrainian



Arabic



Pashto



Dari

Voyage Order Form

Free ONA Ramirez June Initiative & “Learn the Signs. Act Early.” Material



Order form: <https://bit.ly/OrderVoyage>



Developmental
Disabilities
Planning Council



Department of State
Office for New Americans

Distributing Multilingual Materials



- **4,439** multilingual materials from the CDC’s “Learn the Signs. Act Early” Campaign.



- **3,752** copies of *Voyage*



- **163** recipients including immigrant families, community-based organizations, state agencies, and pediatric practices.

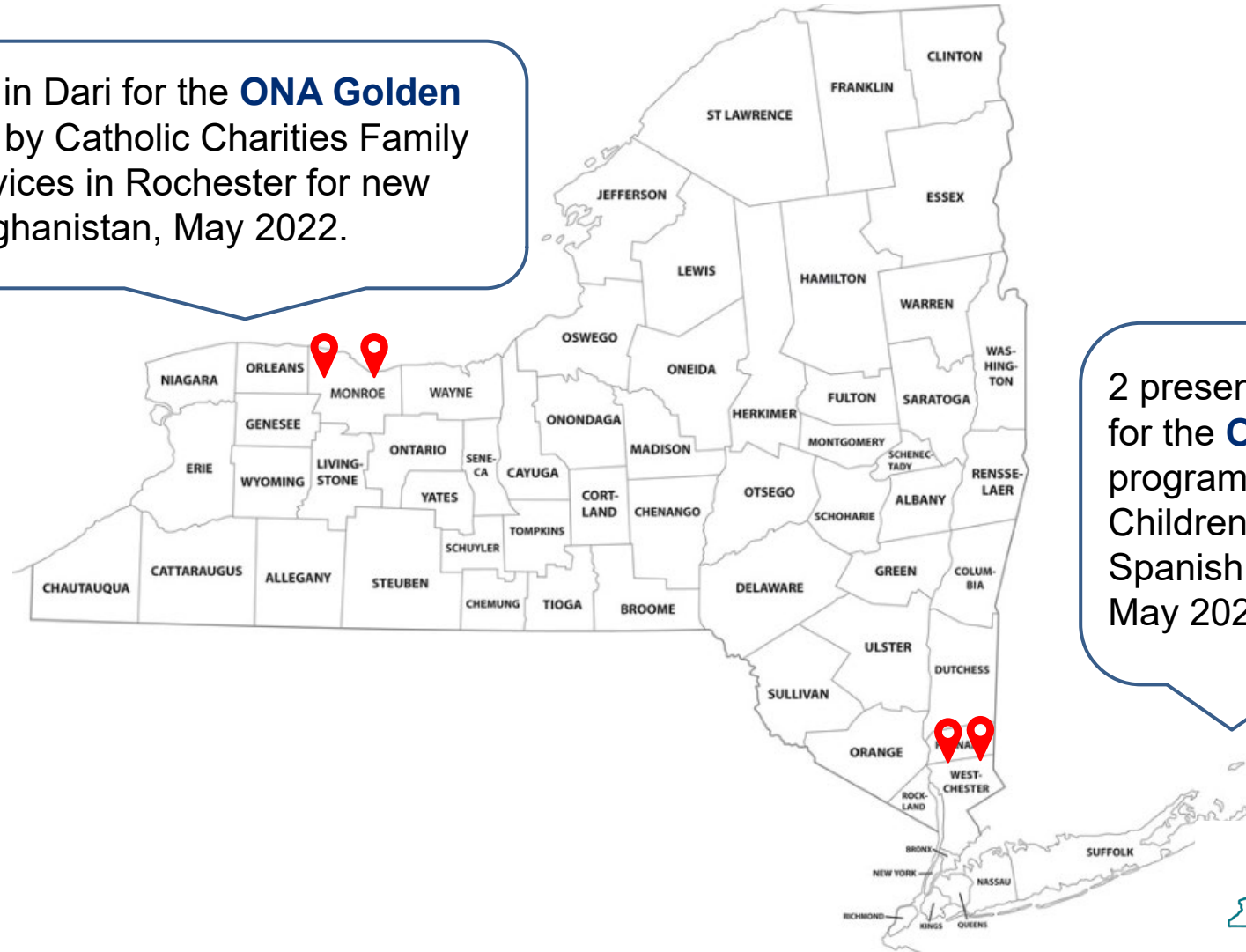
“Last month, I ordered lots of *Voyage booklets* from ONA’s website in Chinese...This is very valuable. Now parents can follow the instructions to monitor their children’s developmental milestones. This is what I missed when I had my child. But now if immigrant parents notice something unusual with their babies, they can get and early diagnosis.”

- **Bin Feng** - Family Peer Advocate



LTSAE Workshops for New American Families

2 virtual presentations in Dari for the **ONA Golden Door Program** hosted by Catholic Charities Family and Community Services in Rochester for new arrivals from Afghanistan, May 2022.



2 presentations in Spanish for the **ONA Golden Door** program hosted by Children’s Village for Spanish speaking families, May 2021.

Training Webinars for Office for New Americans Network Service Providers & Partners

Empowering New American Parents in the Early Identification of Disabilities in Children

An ONA Ramirez June Initiative Webinar
Thursday, March 3, 2022, 3 - 4 p.m.

Register: <https://bit.ly/LearnTheSignsActEarly>



- 96 attendees
- 100% satisfaction from 13 survey respondents

Understanding Trauma and Supporting the Resilience of New American Children

An ONA Ramirez June Initiative Webinar
Thursday, April 7, 2022, 2:30 - 4 p.m.

Register: <https://bit.ly/SupportingResilience>



- 32 attendees
- 100% satisfaction from 27 survey respondents



Expanding Partnership

- **Agri-Business Child Development (ABCD)** is the sole migrant Head Start provider in New York State.
- In spring 2022, the ONA Ramirez June Initiative and NYS Act Early Ambassador expanded their partnership to include ABCD and later the NYS Migrant Education Program to bolster the capacity of their statewide network to identify disabilities early and train providers and parents in the use of LTSAE material.



Agri-Business Child Development ~ Farmers, Families, and Children since 1946

Trainings for Partners

- **Trainings for ABCD Providers in use of LTSAE materials:**
 - June 2022 for **115** English speaking ABCD early childhood education providers, 100% satisfaction from 103 survey respondents.
 - July 2022 for **47** Spanish speaking early childhood education ABCD providers, 97% satisfaction from 20 survey respondents.
 - November 2022 for **27** Spanish speaking parents 100% satisfaction from 13 survey respondents.



Agri-Business Child Development ~ Farmers, Families, and Children since 1946

“The impact of the workshop for the mother with the 13-day-old infant diagnosed Down's Syndrome, who could have her basic question about services for her child answered - priceless.”

– **Immigrant Service Provider**



“I try to go to all the workshops I really like them...I would like to tell you I really like and appreciate the information and help you give.”

– **Parent** *Quote translated Spanish to English*



Recommendations

- Immigrant families need enhanced support to navigate and access disability services and early identification of disabilities and developmental delays.
- Multi-cultural community-based organizations can help immigrant families with children birth through 5.
- Engage people and places that the immigrant communities trust.
- Dedicate time energy and resources to providing quality language access services.

Sustainable Cross-System Partnerships

- Partner with organizations whose goals align.
 - Example: Increasing access for immigrants
- Important for programs to feel they can benefit from each other.
- Dedicated staff to facilitate and sustain cross-system partnerships.
- Cross-system partnerships are needed to help immigrants access vital services.

We Celebrate the Resilience of New American Families!



**Developmental
Disabilities
Planning Council**



**Department of State
Office for New Americans**

Connect with ONA



NewAmericans@dos.ny.gov



dos.ny.gov/office-new-americans



facebook.com/nysnewamericans



twitter.com/nysnewamericans



Learn The Signs. Act Early. Campaign

- <https://www.cdc.gov/ncbddd/actearly/index.html>



Please join us now to reflect and connect on this session in small groups!

1. Exit the session to the home page
2. Click “Community” on top header
3. Select Discussion Rooms from the drop down menu
4. Select the discussion happening right now with our session title

*Each discussion room will include up to six people



**HELP ME GROW
NATIONAL FORUM
WEEK 2023**

