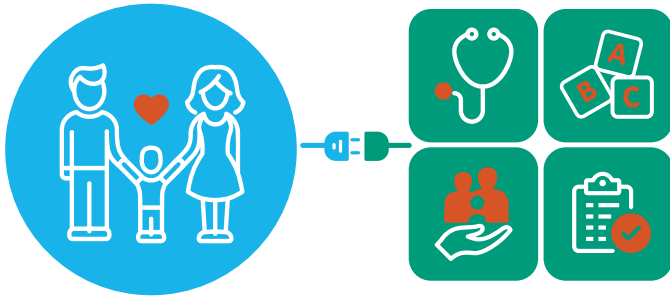


# Strengthening the Power Grid to Power Up Families



**Community resources are like a power grid: when the grid functions well, families can plug in wherever they are to get the help they need. Yet, the grid is not always set up in a way that allows these resources to run equitably throughout a community:**

- ▶ For some families, the grid functions well – these families can plug in and the resources flow consistently and reliably so they get what they need to succeed.
- ▶ For others, the grid is patchy – the resource flow is weak and unreliable; families either do not know where to go to find help, can't plug in, or when they do, they don't get what they need.
- ▶ In some places, the grid is not fully interconnected, which may be due to gaps in the network of resources and can pose a challenge to families attempting to access multiple resources.

**An unreliable or patchy flow of resources to the grid can result in long-lasting consequences on children's health and well-being.**

**HMG-LI strengthens the resource grid by connecting service providers to each other to create a reliable, interconnected, and equitable system that best serves families.**

# HMG-LI Relies on its Partners in the Grid to Help Power Up Families

- ▶ HMG-LI is a collective impact model, a partnership among early childhood stakeholders on Long Island. In 2017, prior to HMG-LI implementation, a social network mapping tool was used to assess the current state of the early childhood system on Long Island. This tool was re-administered in the fall of 2020.
- ▶ The pre- and post- HMG-LI network mapping results illustrate major system-level improvement in the overall dynamics and working relationships among early childhood partners since the launch of Help Me Grow - Long Island.
- ▶ Partners are now working more closely, are more aligned in their work, and successfully building a cross-sector, more integrated early childhood system than before the implementation of Help Me Grow - Long Island.

## Findings include:

- ▶ Increased cooperative working relationships (15% in 2017 -> 41% in 2020).
- ▶ 74% of respondents said the most important outcome of this work has been advanced collaboration and collective impact among partners (up from 2% in 2017).
- ▶ 60% of partners said that the system has thus far been moderately or very successful at meeting the needs of families.