

Help Me Grow: So All Children Can Shine



Help Me Grow National Forum
September 22, 2021

Presented by
Kimberly Martini-Carvell
Executive Director
Help Me Grow National Center

Associate Director
Office for Community Child Health
Connecticut Children's Medical Center

Early Childhood in the United States

Number of Children in the United States

| | |
|----------|--------------|
| Age 0-5 | 23.6 million |
| Age 6-11 | 24.4 million |



More than half of the 23.6 million children under five in America in 2019 were children of color.

Sources:

U.S. Census Bureau. 2020. "Annual State Resident Population Estimates for 6 Race Groups (5 Race Alone Groups and Two or More Races) by Age, Sex, and Hispanic Origin: April 1, 2010 to July 1, 2019," 2019 Population Estimates. <https://www.statista.com/statistics/457786/number-of-children-in-the-us-by-age/>
<https://www.census.gov/newsroom/press-kits/2020/population-estimates-detailed.html>

The Youngest Children are the Poorest

In 2020, more than 1 in 6 children under the age of 6 were poor and almost $\frac{1}{2}$ of those children lived in extreme poverty.

Nearly 6 million children live in low-income families that spend more than half their income on rent.



Sources:

Children's Defense Fund. 2020 The State of Americas Children.

<https://www.childrendefense.org/wp-content/uploads/2020/02/The-State-Of-Americas-Children-2020.pdf>

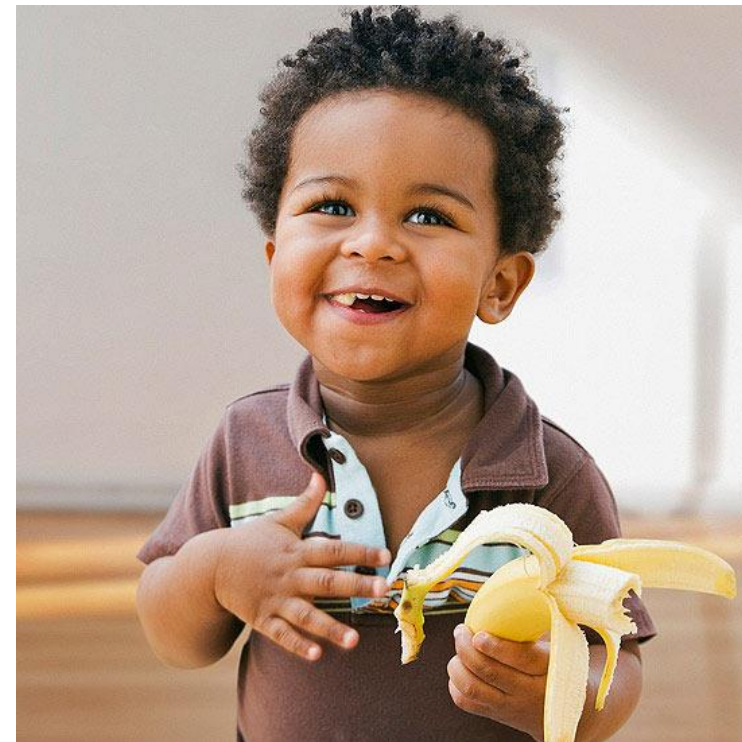
Supports to the most Food Insecure

In 2020, Women, Infants, and Children (WIC) served 6.2 million participants per month.

Over the course of 2020, almost half of all infants born were supported by WIC programming.

Sources:

United States Department of Agriculture. Economic Research Service. 2021. WIC Program.
<https://www.ers.usda.gov/topics/food-nutrition-assistance/wic-program/>



Child Welfare

More than 656,243 children were victims of abuse or neglect in 2019.

More than half of all child maltreatment cases involved children under 7 years of age.

| | |
|---------|------------------------|
| Age 0-3 | 223,123 children (34%) |
| Age 4-7 | 144,373 children (22%) |

Sources:

Williams, Sarah Catharine. 2020. State Level Data for Understanding Child Welfare in the United States. Child Trends.
<https://www.childtrends.org/publications/state-level-data-for-understanding-child-welfare-in-the-united-states>

Health and Wellbeing

From January to May 2020, the number of Medicaid and CHIP-enrolled children under age 2 receiving vaccinations declined by more than 30%.

Only 36% of children 9-35 months received a developmental screening via child healthcare provider in 2019.



Sources:

Center for Health Care Strategies. 2021. COVID-19 and the Decline of Well-Child Care: Implications for Children, Families, and States
<https://www.chcs.org/resource/covid-19-and-the-decline-of-well-child-care-implications-for-children-families-and-states/>

The High Cost of Early Care and Education

There are only enough licensed child care providers to serve 23% of infants and toddlers.

Licensed child care is more than 3x as scarce for children under the age of 2 than it is for 3-5 years old.

On average infant care costs \$11,000 per year and only 1 in 6 families who are eligible for child care subsidies, receive them.



Sources:

Center for American Progress. 2020. The Costly and Unavailable: America Lacks Sufficient Child Care Supply for Infants and Toddlers.

<https://www.americanprogress.org/issues/early-childhood/reports/2020/08/04/488642/costly-unavailable-america-lacks-sufficient-child-care-supply-infants-toddlers/>

Opportunity for Early Childhood in the United States

The American Rescue Plan Act (ARPA)

ARPA provides over \$39 billion in additional child care relief

- \$15 billion in CCDBG subsidy funding
- \$24 billion in sustainability grants
- \$633 million in mandatory CCDBG funding
- \$1 billion for Early Head Start/ Head Start
- \$250 million for Part C Early Intervention





Pediatric Mental Health Care Access

Funding \$80 million until expended

Purpose:

To promote behavioral health integration in pediatric primary care by supporting development of new or improvement of existing statewide or regional pediatric mental health and telehealth access programs

Opportunity for Help Me Grow



- Serve as a centralized access point for child health providers and caregivers with concerns regarding a young child's behavioral health
- Support the integration of behavioral health screening apart of child well-visit.
- Implement a systemic process for the inclusion and updating of early childhood behavioral health providers and programs within HMG resource directory.

The Community Mental Health Services and Black Grant Funding

Funding \$1.5 billion through Sept. 30, 2025

Purpose

Grants to carry out a state's mental health plan which include but are not limited to providing **comprehensive, community-based mental health services to young children beginning at birth and adults**; to monitor progress in implementing a comprehensive, community-based mental health system.

Opportunity for Help Me Grow



- Use funds to establish/expand infant and early childhood mental health (IECMH) promotion.
- Outreach & engagement of providers on the importance of social-emotional health.
- Sharing of data on gaps and barriers for IECMH services.
- Prioritize access and coordination of IECMH services within community-based early childhood system.

Substance Abuse Prevention and Treatment Block Grant Funding

Funding \$1.5 billion through Sept. 30, 2025

Purpose

Grants to states to plan, implement and evaluate activities that prevent and treat substance use disorder and promote public health

Opportunity for Help Me Grow



- Collect and share data on need, access and treatment availability.
- Advocacy for two-generation, dyadic models.
- Expand services to include/serve pregnant women and families with young children.
- Support early childhood through early identification of concern or need, referral and linkage.

The National Traumatic Stress Network

Funding \$10 million until expended

Purpose

Raise the standard of care and increase access to services for young children and their caregivers who witness or experience traumatic stress.

Opportunity for Help Me Grow

- Identify, outreach and engage with NCTSN funded centers with HMG.
- Support the integration of surveillance & screening for traumatic stress as part of the early childhood system.
- Targeted outreach and engagement of families who have experienced traumatic stress.
- Collaborate with child-serving public and private non-profits to apply for SAMHSA funds and include perinatal, infant and early childhood mental health in their work.

Supplemental Nutrition for Women, Infants, and Children

Funding \$390 million for program modernization

- Standardize process for referrals from WIC to HMG
- Provide professional development or outreach activities delivered to WIC
- Serves as centralized access point for referrals from HMG to WIC
- Invest in and assess the quality of partnership between HMG and WIC
- Support an increase number of screenings conducted in WIC Settings



Community-Based Child Abuse Prevention Program

Funding \$250 million available through Sept 30, 2023

Purpose

Flexible source of funds for wide-ranging activities to prevent child abuse and support families

Opportunity for Help Me Grow



- Provide linkages to basic need resources.
- Outreach and engagement to combat social isolation.
- Engagement of caregivers in developmental promotion and anticipatory guidance.
- Parenting support and connections to community based services.

Maternal, Infant, and Early Childhood Home Visiting (MIECHV)

Funding \$150 million available through Sept. 20, 2022

Purpose

Rapidly scale up evidence based home visiting programs.

Opportunity for Help Me Grow



- Serve as the centralized intake infrastructure for home visiting programs.
- Expand the capacity of home visitors in provision of developmental surveillance and screening and linkage to community based supports.
- Close the feedback loop with child health care providers and home visitor.
- Marketing of increased home-visiting program capacity.

Emergency Housing Relief

- \$21.6 billion in emergency rental assistance through Sept. 30, 2025
- \$5 billion for housing vouchers available through Sept. 20, 2025
- \$5 billion for homelessness assistance



Child Tax Credit

Increases in the Child Tax Credit:

- \$3,600 for families with children under 6 (\$300 per month)
- \$3,000 for children ages 6-17



Child Tax Credit

Changes to the CTC are estimated to reduce child poverty by 45%

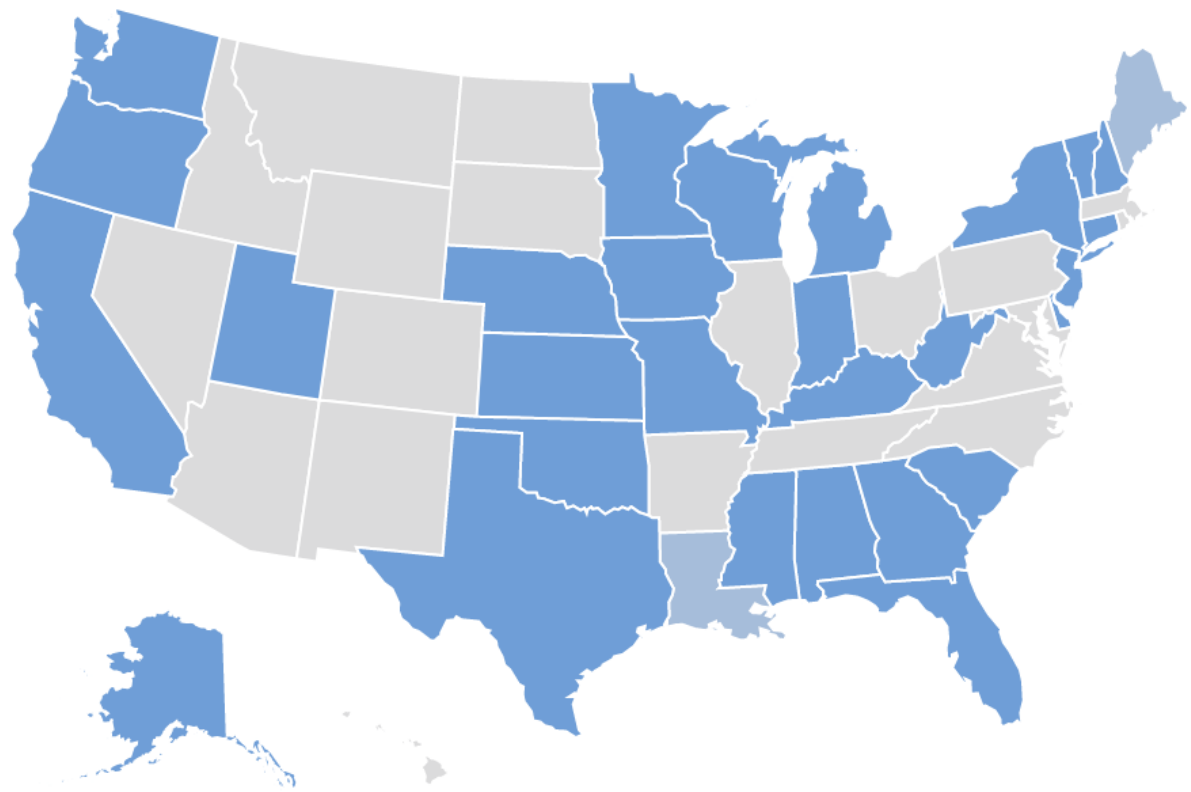
The first two rounds of stimulus payments prevented 4.5 percent of children from falling into poverty, holding everything else constant, while refundable tax credits prevented 3.8 percent of children from falling into poverty.

In absolute numbers, stimulus payments alone kept 3.2 million children out of poverty in 2020, and tax credits alone kept 2.7 million children out of poverty in 2020.

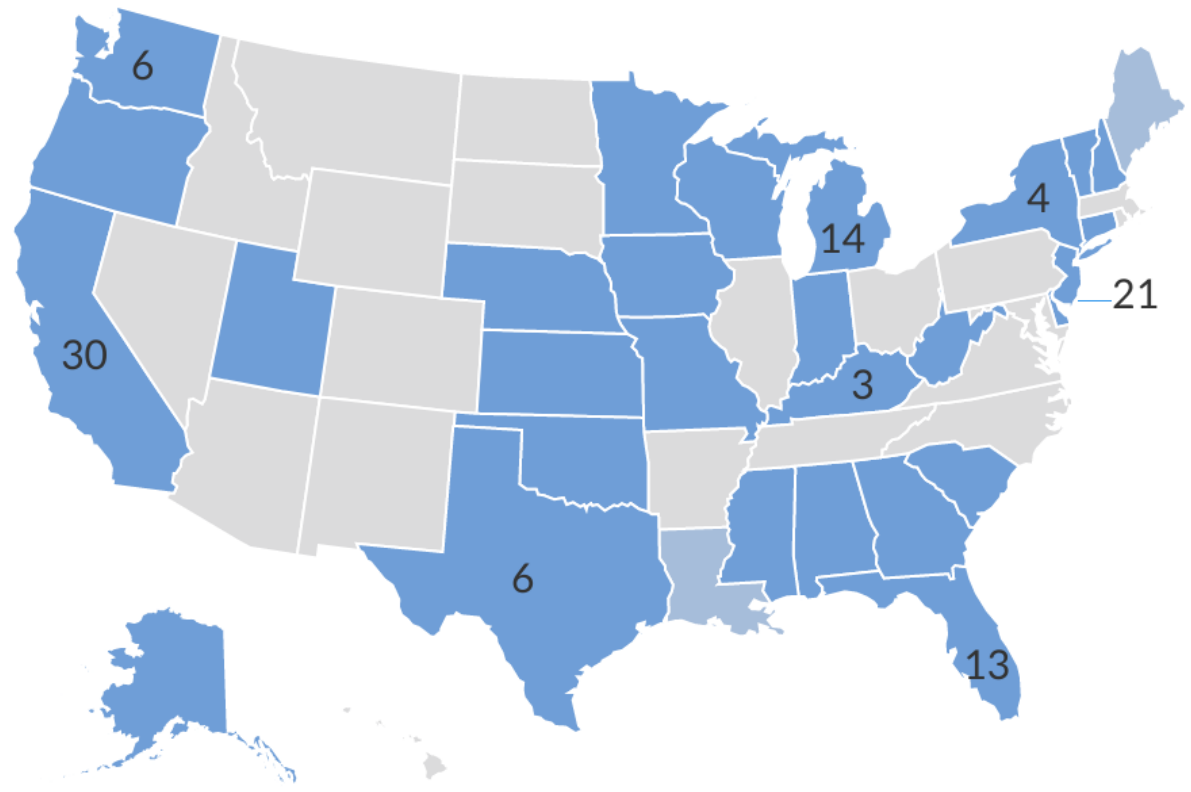
The federal economic relief efforts enacted in the wake of the pandemic also reduced racial and ethnic disparities in poverty: The difference between the SPM and OPM rates was greater for Black (4.9%) and Hispanic (3.0%) individuals than it was for non-Hispanic White individuals (1.7%).

Help Me Grow, Building Impact

Growth of the National Affiliate Network



Single-System and Multi-System HMG Affiliate States



Notable Changes from 2019 to 2020

2020 was atypical and extraordinary in almost all ways. The COVID-19 pandemic and social distancing policies affected HMG, however, the HMG National Affiliate Network persevered. Changes observed:

- 16 new systems joined the National Affiliate Network through regional expansion in existing affiliate states. However, the National Network lost two affiliate states due to difficulties sustaining leadership buy-in and funding to support the HMG Model.
- Ten HMG systems advanced in their overall implementation status.
- Twenty HMG systems are just one or two Key Activities shy of being in full implementation of the HMG Model.
- HMG affiliates continue to exhibit the greatest progress in the Family & Community Outreach Component of the HMG Model.
- The number of HMG-led networking events increased 14%.
- The number of HMG systems reporting data sharing amongst their partners rose 20%.

Progress Towards Full Implementation of the Model

20 systems are one or two Key Activities away from full fidelity and implementation

| Key Activity | Number of HMG Systems that will be in full implementation of the Model once this Key Activity is achieved |
|--|---|
| Quarterly Update to Resource Directory | 6 |
| Continuous Quality Improvement | 5 |
| Follow-up with families at least 75% of the time | 5 |
| Closing the feedback loop with providers at least 75% of time | 4 |
| Mechanism to identify Barriers | 4 |
| Identify a Physician Champion | 3 |
| Intended CAP Age Range 0-9 | 1 |
| The HMG call center is accessible to families/caregivers, health care providers, and community agencies. | 1 |
| Digital Resource Directory | 1 |
| At least 2 networking meetings with partners | 1 |
| Trainings for physicians on screening/surveillance | 1 |

Integration with National Funding Initiatives

| | Preschool Development Grant Birth through Five (PDG B-5): Jurisdictions Winning Renewal Grants in 2020 | Early Childhood Comprehensive Systems (ECCS) Health Integration Prenatal-to-Three (ECCS) Program Awards 2021 | Pritzker Children’s Initiative (PCI) Community Innovation Grantees 2020 |
|-----------------------|--|--|---|
| Number of HMG Systems | 18 | 12 | 6 |

Our Impact



- In the face of the COVID-19 pandemic, **85%** of reporting systems **maintaining or strengthening the critical feedback loop to child health providers.**
- HMG systems conducted **980 trainings** for child health care providers on the topic of **developmental surveillance and screening.**
- HMG systems conducted **1,769 trainings** on the topic of the **HMG Centralized Access Point** as a resource to support referral and linkage.

Our Impact



- HMG systems conducted targeted outreach to families, community providers, and child health care providers, **reaching more than 147,884 parents, caregivers, and other family members.**
- HMG **reached 23,615 individuals from community-based agencies** across the country through efforts such as events, trainings, and networking.
- HMG **systems trained 27,766 non-medical professionals on developmental screening and/or referral and linkage.**

Our Impact



- HMG systems served **102,726 children and families through the Centralized Access Point**
- HMG requires **follow-up with at least 75% of families** who access the Centralized Access Point and wish to continue working with a HMG Care Coordinator.
- In 2020, **81% of callers reported that HMG met their needs**

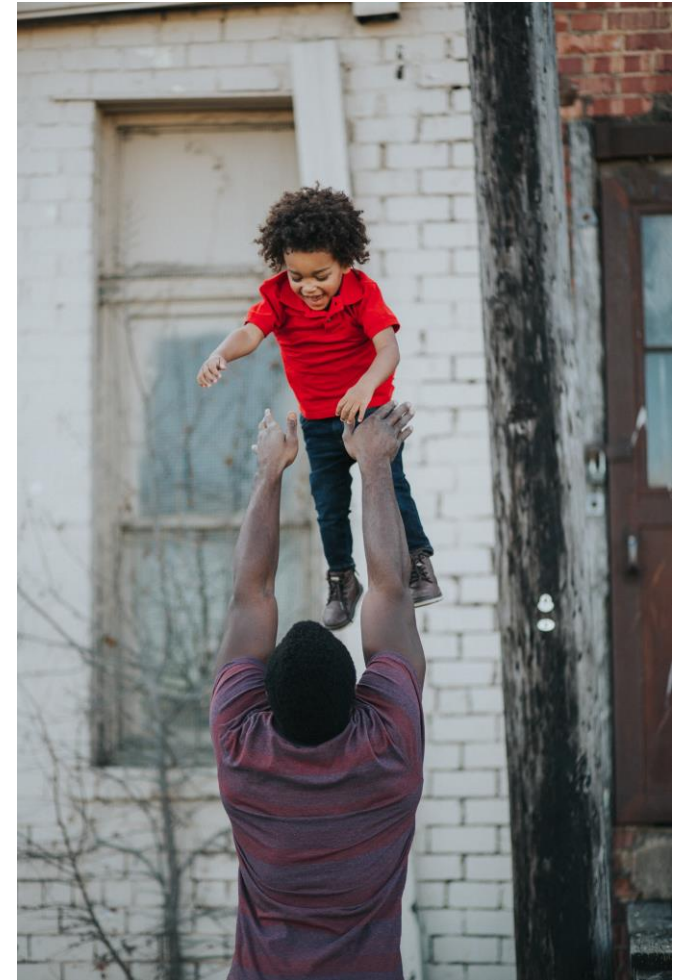
Our Impact



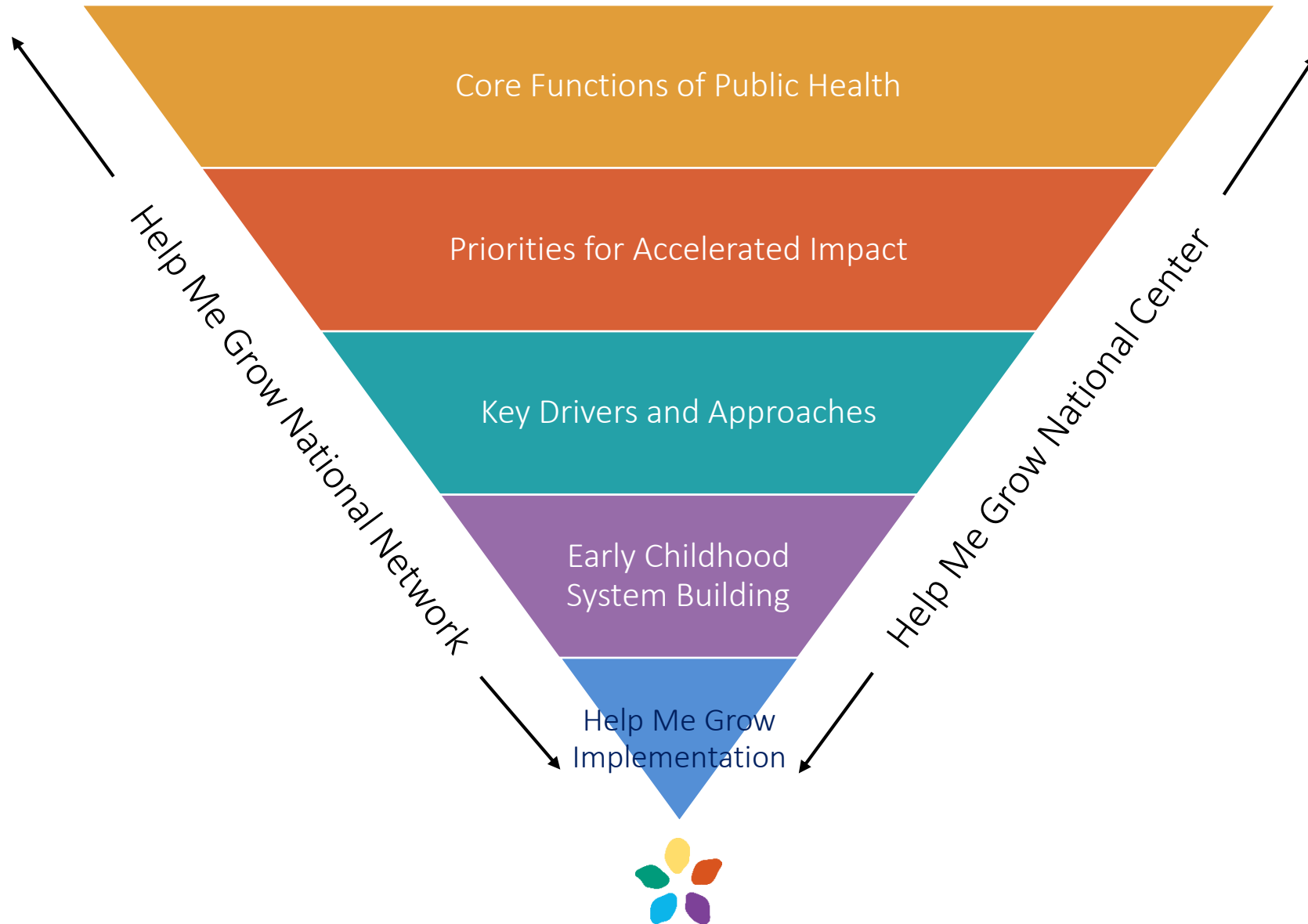
- 94% of HMG systems monitor key data points in order to **guide quality improvement, share data with external partners, and inform community-level change.**
- 85% of HMG systems **share their data amongst external partners.**

A Laboratory & Vehicle for Systems Change

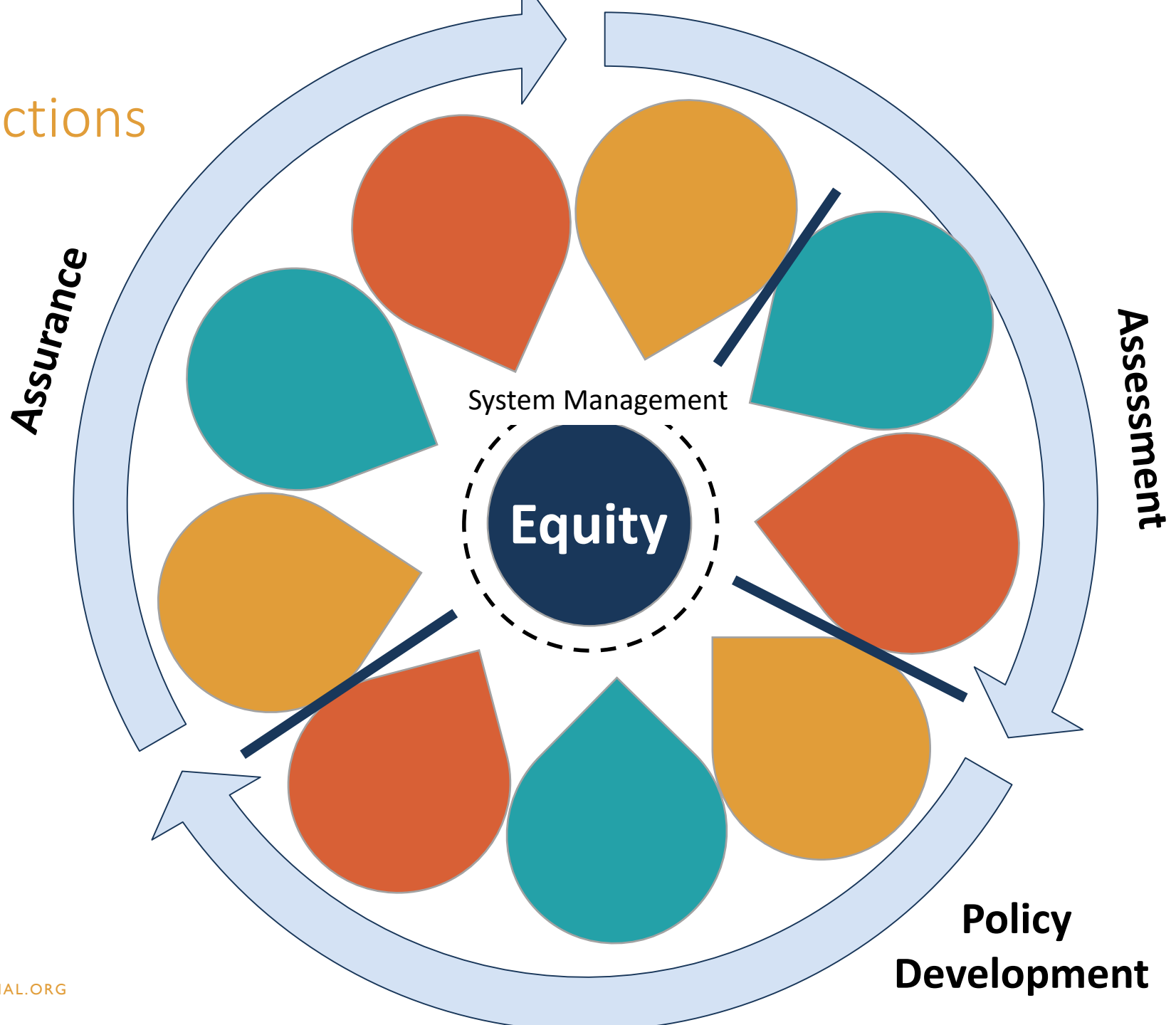
- Covid-19 response
- CAP WG report and recommendations
- Start Early
- WIC Community of Practice
- ROI Calculator & Business Case
- PSP prototype build & Early Childhood Integrated Data Systems
- Collaboration for early childhood system building



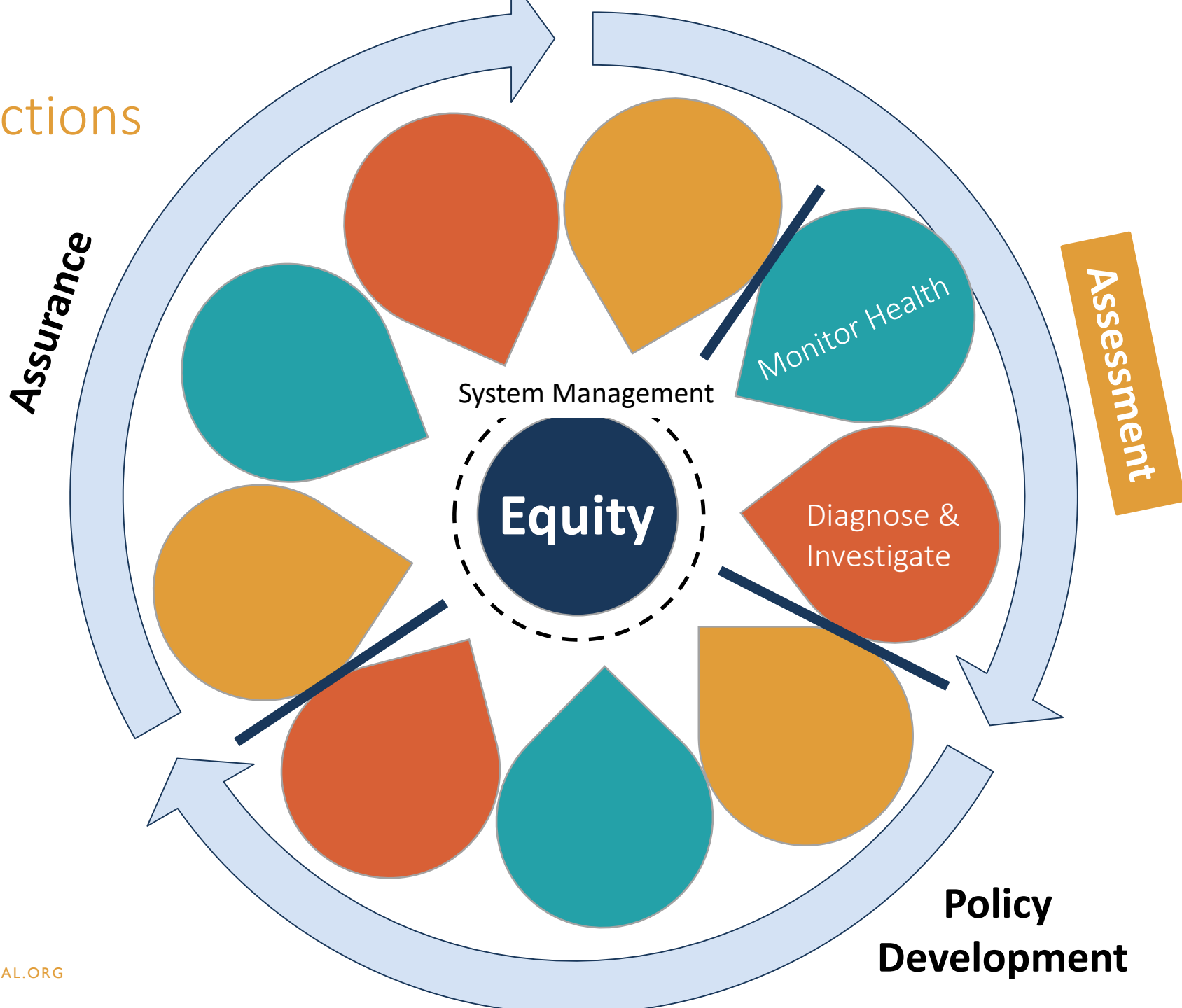
Help Me Grow: A Public Health Approach



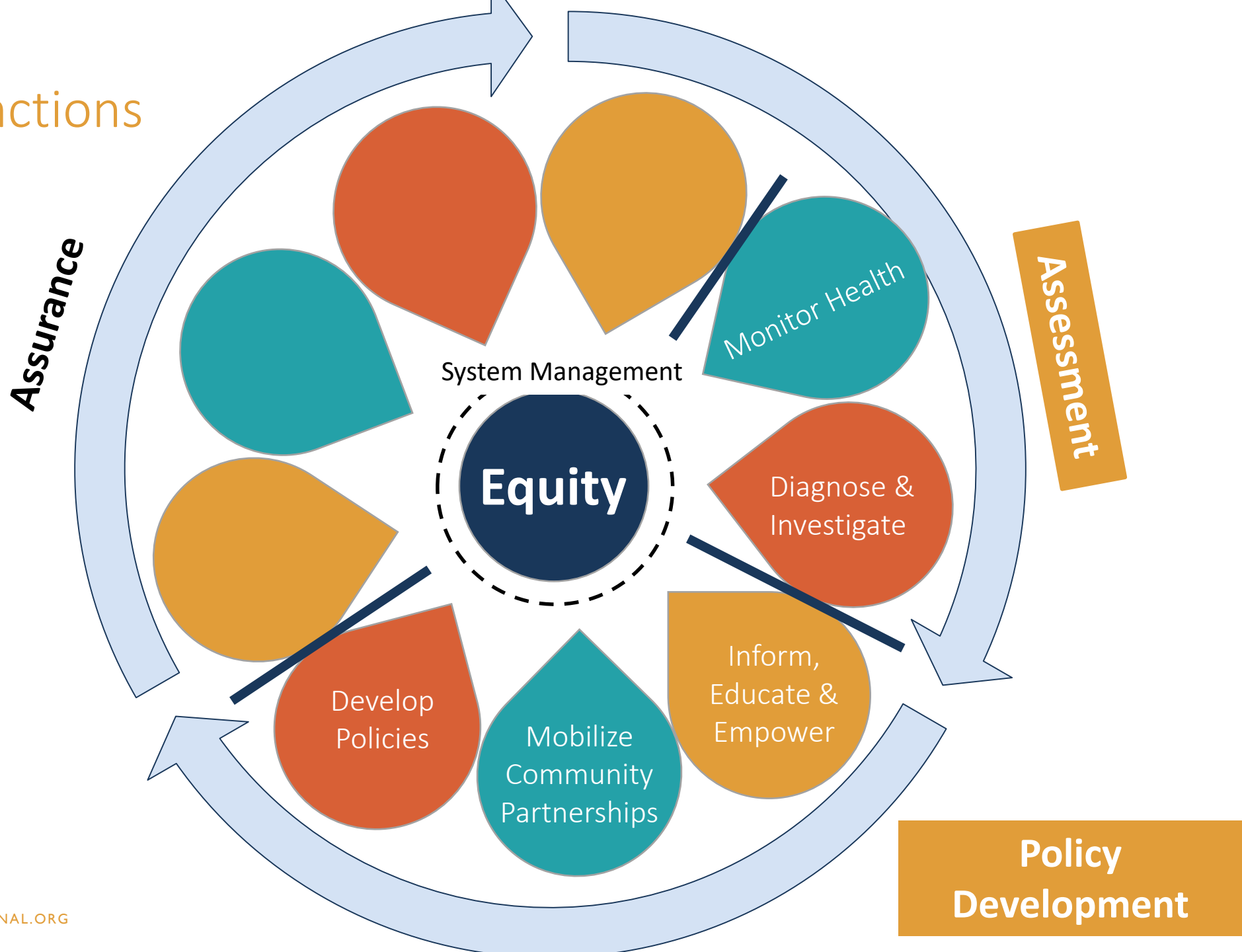
Core Functions of Public Health



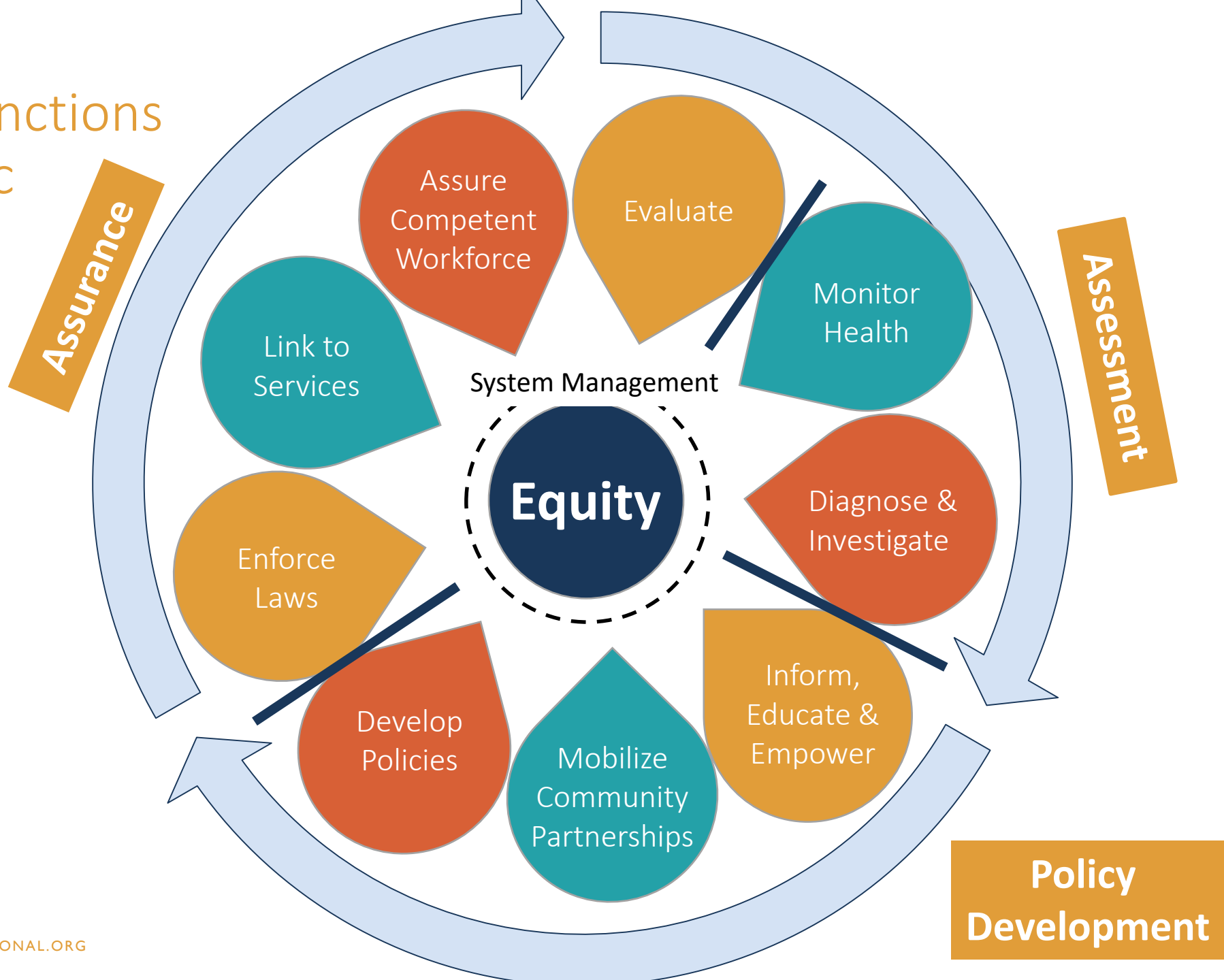
Core Functions of Public Health



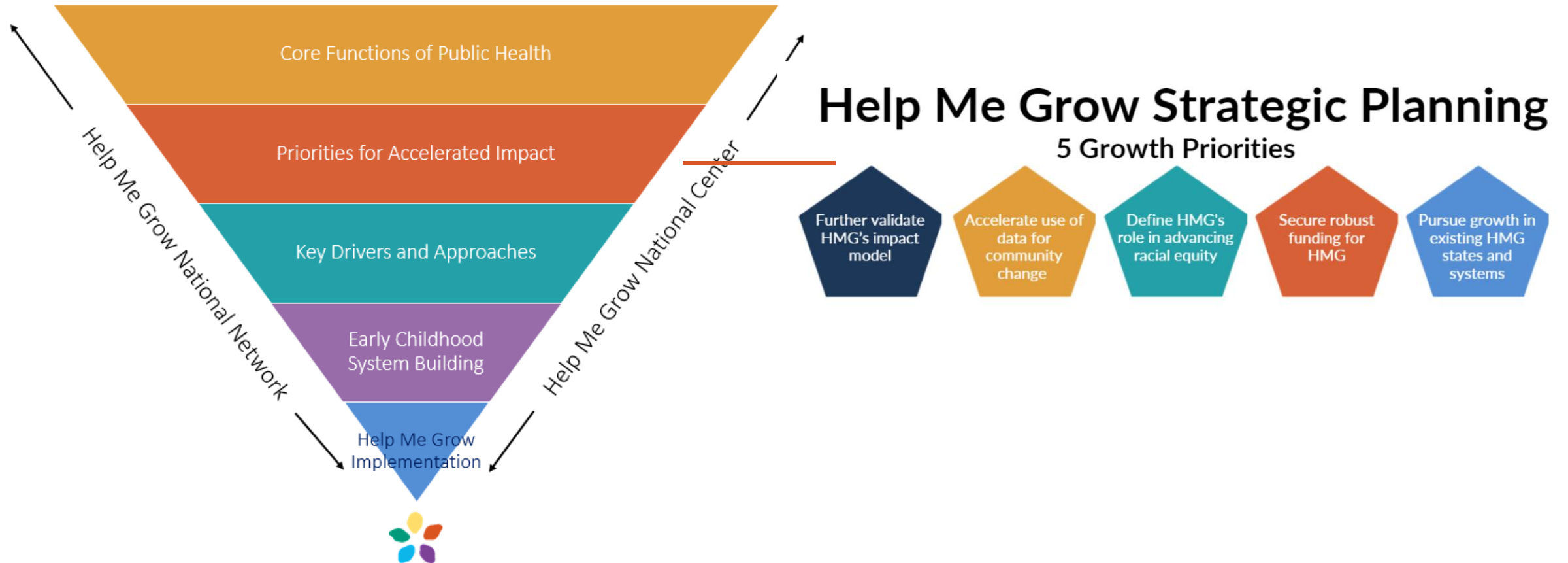
Core Functions of Public Health



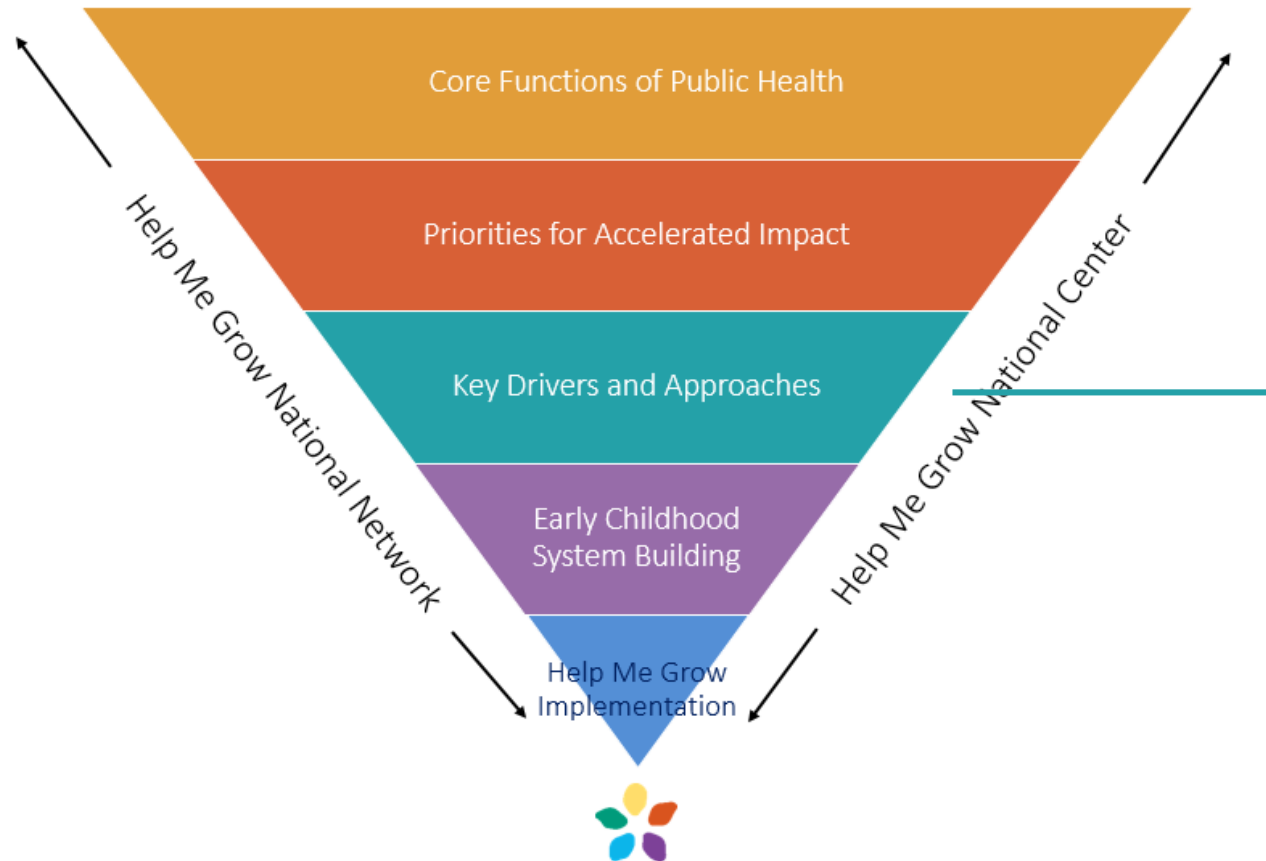
Core Functions of Public Health



Priorities for Accelerated Impact

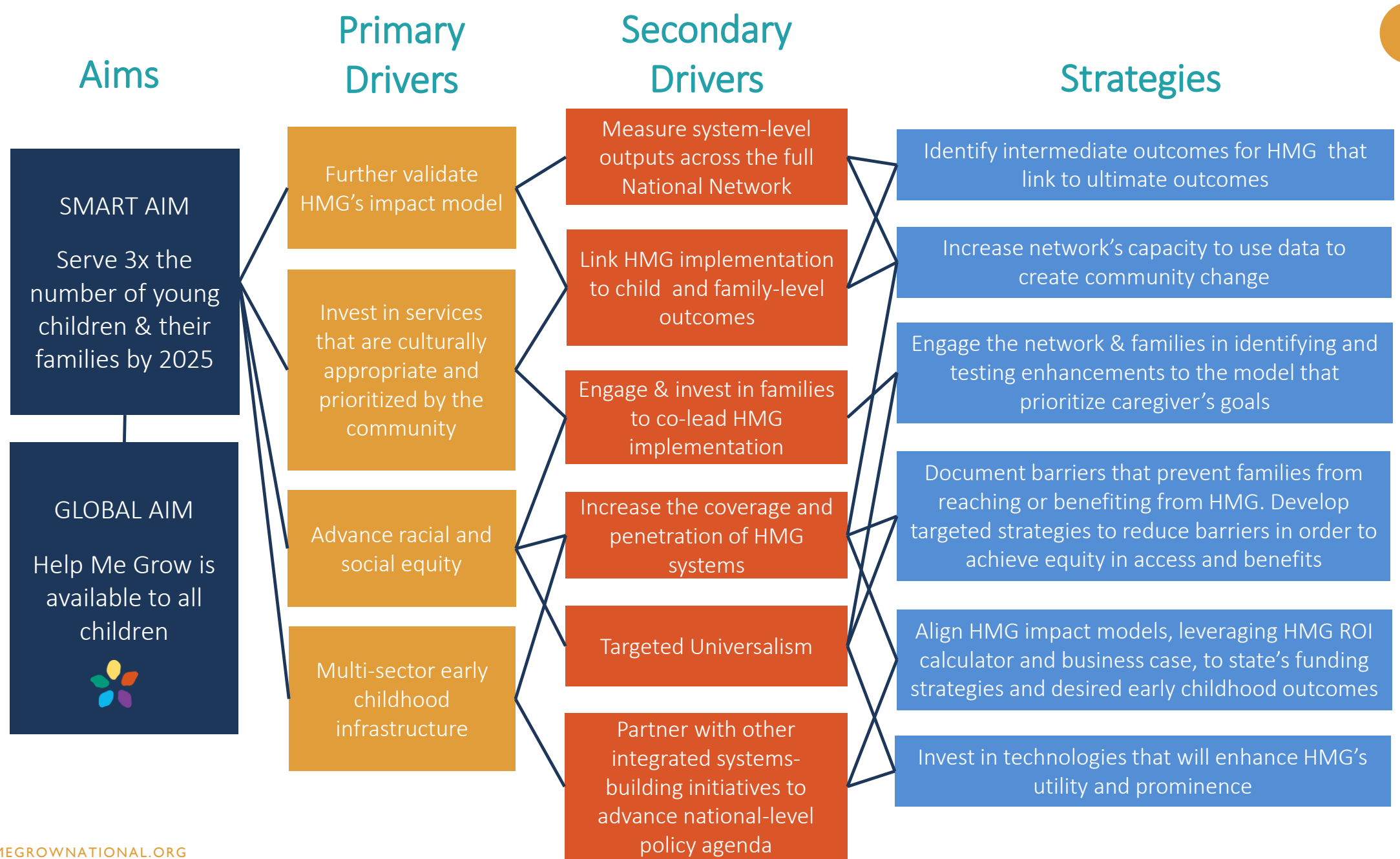


Key Drivers and Approaches



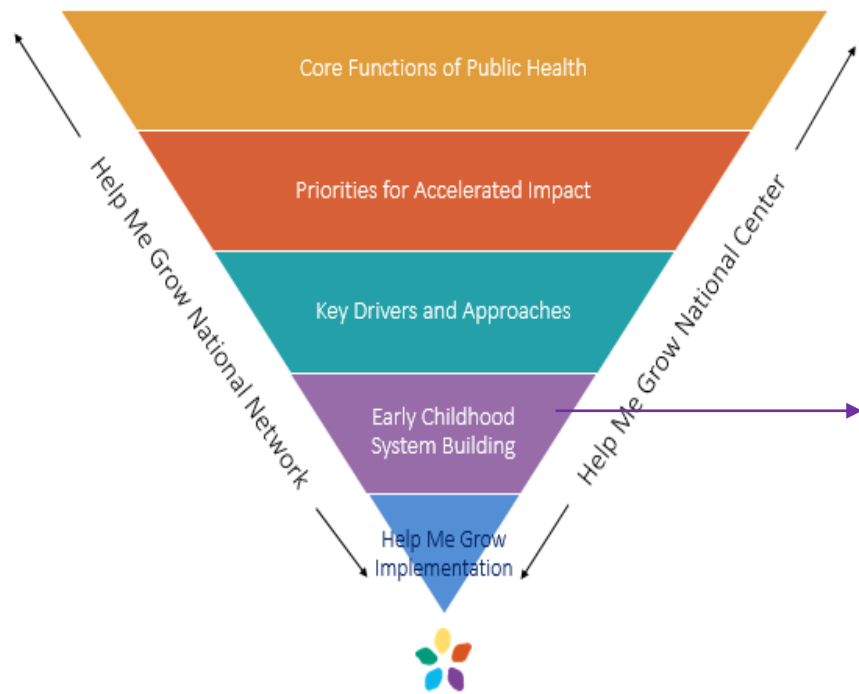
- Targeted Universalism
- Goal Concordance/Family Priorities
- Promotion & Prevention
- Well-being/Healthy Outcomes
- Shared Infrastructure
- Equitable Access
- Community Co-production
- Innovations implemented in the context of the existing system

Key Drivers & Approaches



Early Childhood System Building

A Public Health Approach



Surveillance

What is the problem?



Risk Factor Identification

What is the cause?



Intervention and Evaluation

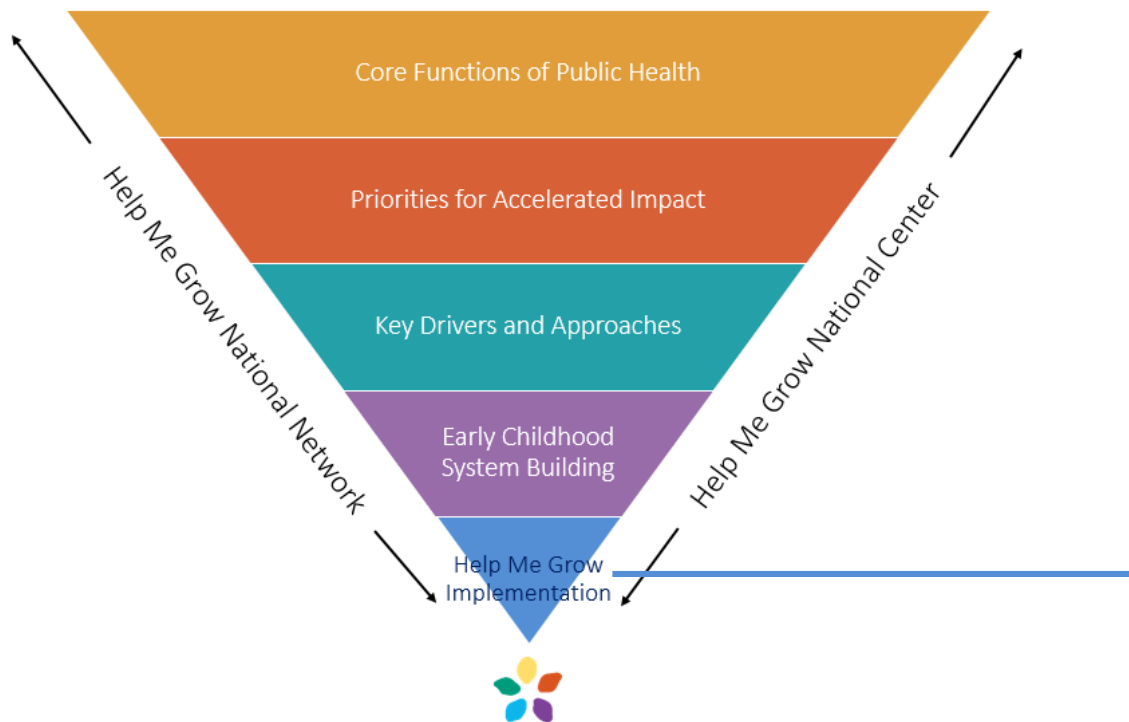
What Works?



Implementation

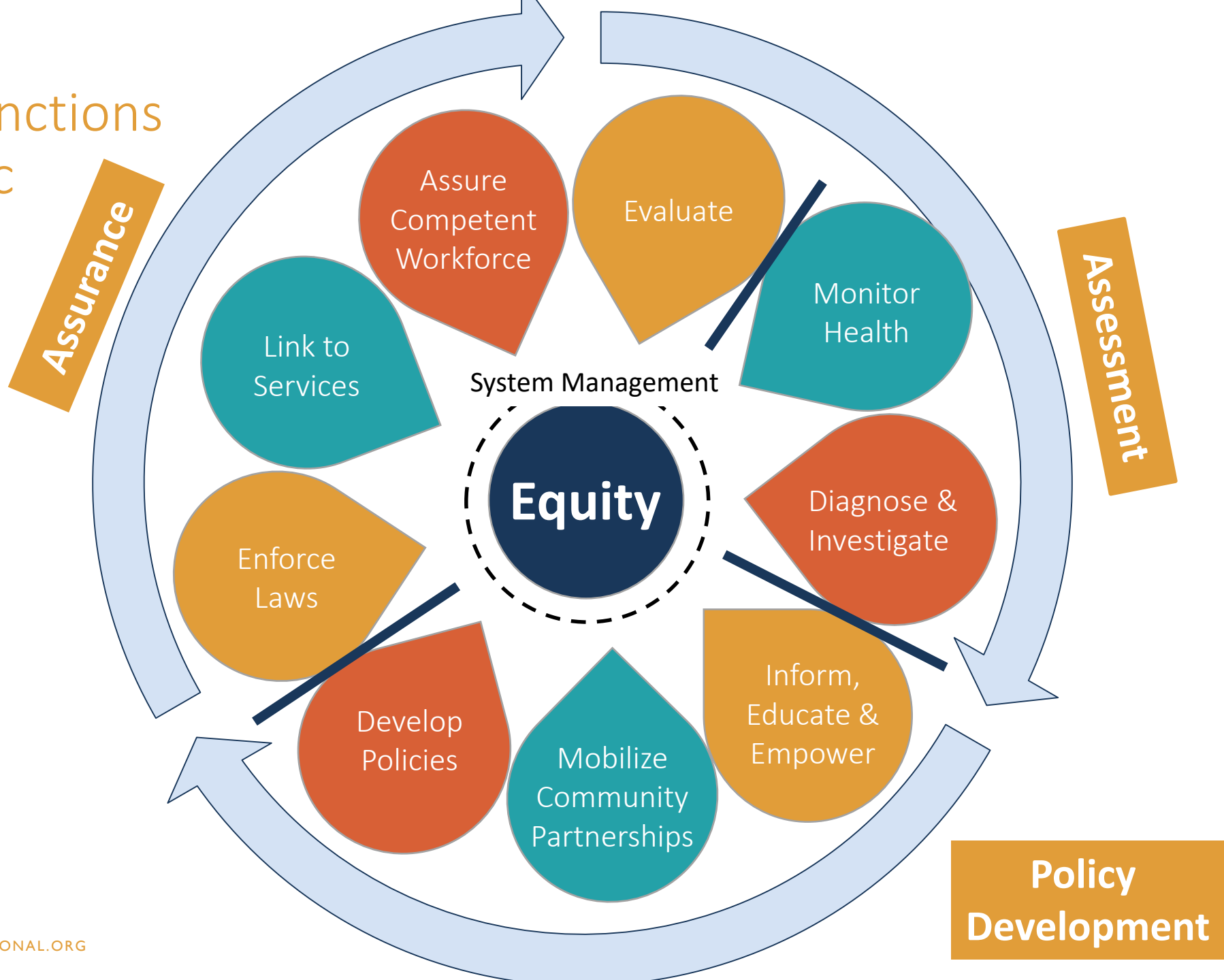
How do you do it?

Help Me Grow Implementation



| MODEL CORE COMPONENT | KEY ACTIVITIES |
|--------------------------------|---|
| Centralized Access Point | <ul style="list-style-type: none"> Specialized child development line Linkage and follow-up Researching resources Real-time directory maintenance |
| Family and Community Outreach | <ul style="list-style-type: none"> Engaged community partners Networking Community events and trainings Marketing |
| Child Health Provider Outreach | <ul style="list-style-type: none"> Physician champion Training on surveillance and screening Training on referral and linkage Closing the feedback loop |
| Data Collection and Analysis | <ul style="list-style-type: none"> Data monitoring Sharing data across partners Continuous quality improvement Community change through data |

Core Functions of Public Health



Help Me Grow a Public Health Initiative

