

Interweaving Priorities,

Data & Funding to Sustain Cross-System
Help Me Grow Efforts in Kansas



An Affiliate of the National Network



Together We Will...

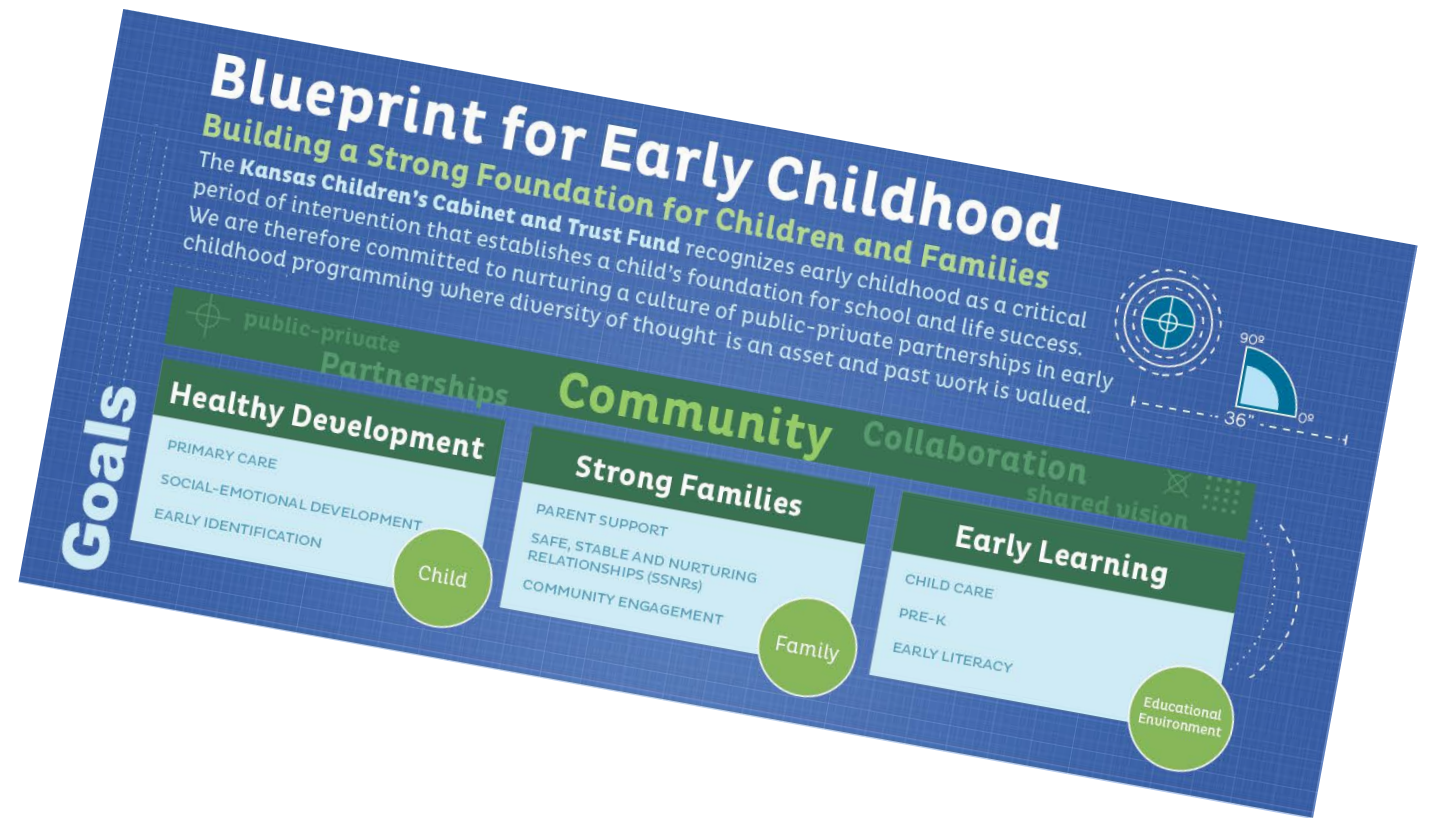


- Discuss factors that support efforts to sustain Help Me Grow and related Early Childhood and Maternal and Child Health Priorities
- Identify adaptive and technical challenges to applying these factors to coordinate cross-agency activities in support of sustainability efforts for Help Me Grow





Kansas's Shared Vision



Sustainability



“...when new ways of working and improved outcomes become the norm.”

-Thomas and Zahn (2010)



Framework for Sustainability



- Perceived Value
- Leadership
- Staff
- Shared Models
- Organizational Infrastructure
- Funding
- Government Policies
- Organizational Fit
- Community Fit
- Partners
- Monitoring & Feedback
- Spread



Framework for Sustainability



Choosing Factors:

- importance to the project
- ability to influence the factor



Framework for Sustainability



Perceived Value

Leadership

Staff

Shared Models

Organizational Infrastructure

Funding

Government Policies

Organizational Fit

Community Fit

Partners

Monitoring and Feedback

Spread



Community Fit

New ways of working
and improved
outcomes match the
communities'
interests, needs, and
abilities

Community Fit



What do you look for in a community as you are thinking about implementing HMG?

How do you determine whether a community is ready for new ways of working?

How do you nudge communities towards new ways of working while being responsive to their interests, needs and abilities?

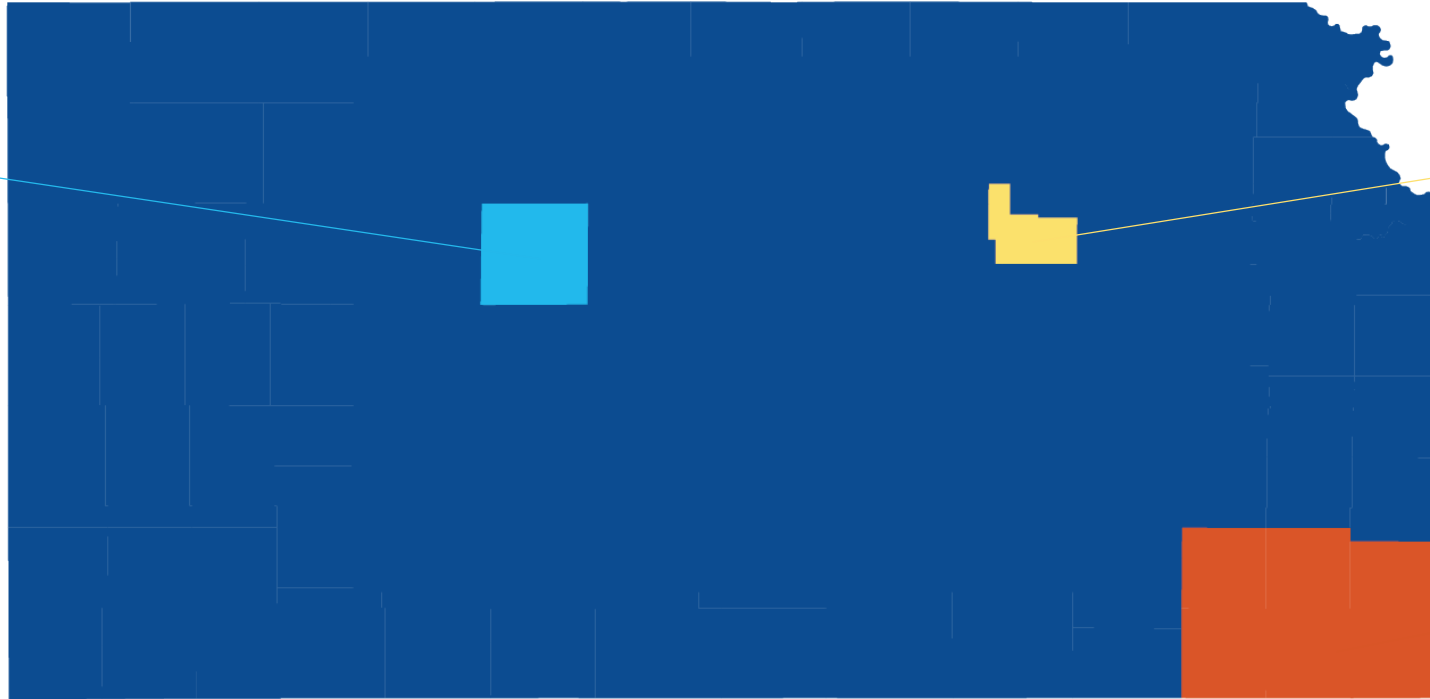
HMG Kansas Communities



Ellis County

Geary County

SE Kansas



Partners

Involvement of
partners who actively
support new ways of
working and
improved outcomes

Partners at the Table



Kansas Department of Health and Environment

Maternal and Child Health

Part C Infant Toddler Services

Maternal, Infant, Early Childhood Home Visiting

Special Health Care Needs

Medicaid

Sunflower Health

University of Kansas Medical Center

Department of Children and Families

Behavioral/Mental Health

Kansas State Department of Education

Early Childhood Special Education

Head Start

Parents as Teachers

Child Care Aware

Kansas Child Care Training Opportunities

Kansas Children's Cabinet

United Methodist Health Ministries

Local Health Departments

Medical Providers

Child Care Providers

Federally Qualified Health Centers

Families & Community Members

Local Government

Partners



Who is at your table?

Who are the partners you couldn't do without?

Who are the partners who have surprised you? Those partners you might not have known you couldn't do without?

What are effective ways you have found to involve families and community members in this work?

Monitoring & Feedback

**Information on
improved outcomes
is collected and
communicated to
target audiences**



Integrated Referral & Intake System

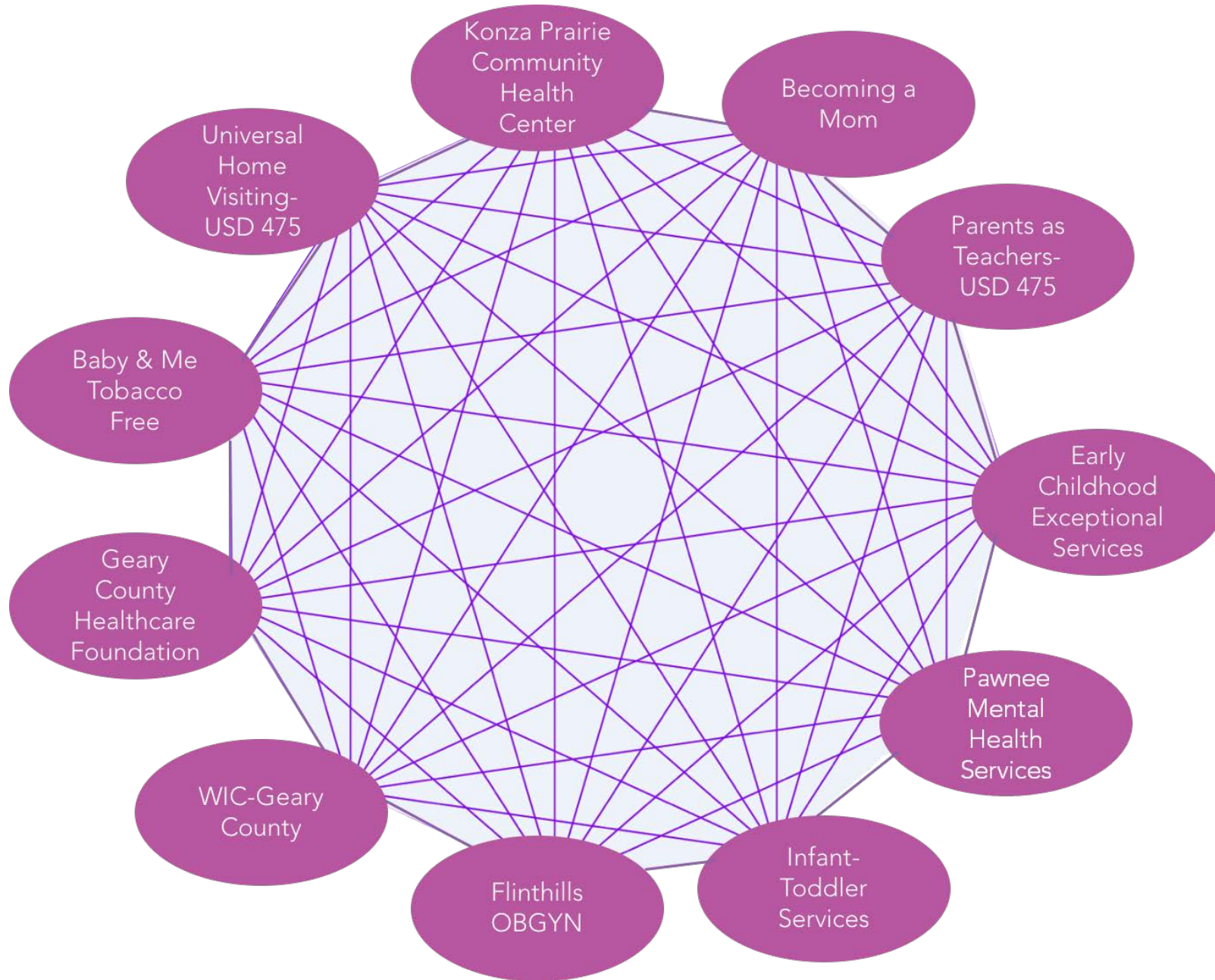
A web-based communication tool designed to help organizations connect the families they serve to needed resources in their community

connectwithiris.org





IRIS



Monitoring & Feedback



How do you share information? Who do you share information with?

How do you use data for CQI? To create change at multiple levels?

How do you measure your process?

Spread

Expanding new
ways of working and
improved outcomes
to additional
locations

Expanding New Ways of Working

What is your greatest spread success story?

What were some of the adaptive and technical challenges you faced in your efforts to spread new ways of working and improved outcomes?

How did you overcome these challenges?



Thank You!

Jessica Looze, Ph.D.

jlooze@ku.edu

Heather Smith, MPH

Heather.Smith@ks.gov

Teri Garstka, Ph.D.

garstka@ku.edu

