



Help Me Grow[®]
National Center

Birth to 5:

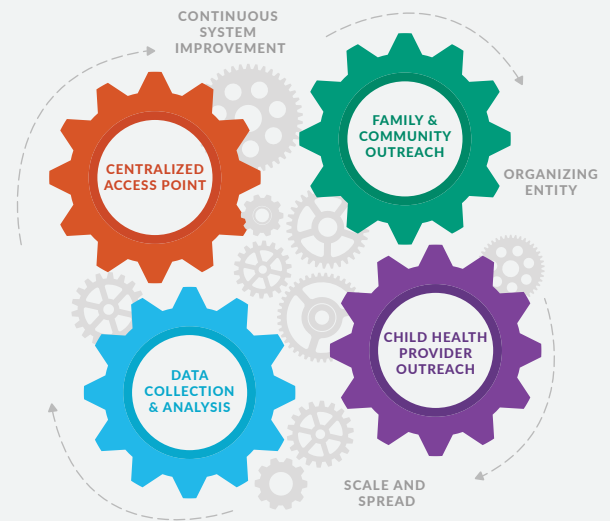
**WATCH ME
THRIVE!**

BIRTH TO 5: WATCH ME THRIVE! AND HELP ME GROW:

A Partnership to Advance Developmental Promotion, Surveillance,
Screening and Linkage to Services for All Children

HELP ME GROW: A System Model Approach to Developmental Promotion, Early Detection, and Linkage to Services

Help Me Grow is a comprehensive, integrated, cross-sector approach designed to help states and communities leverage existing resources to ensure the identification of vulnerable children, link families to services, and empower all families to support their children's healthy development. The Help Me Grow National Center serves as a resource to support a network of nearly 100 Help Me Grow systems in 28 states in the implementation of four Core Components.



Birth to 5: Watch Me Thrive!

was created as an unprecedented multi-faceted initiative coordinated across multiple federal agencies to encourage the celebration of developmental milestones, promotion of universal developmental and behavioral screening, identification of possible delays and concerns early, and enhancement of developmental supports by a wide range of professionals delivering services to families with young children, including Child Health Care Providers, Child Welfare Caseworkers, Early Care and Education Providers, Early Intervention and Early Childhood Special Educators, Home Visitors, Shelter or Housing Assistance Providers, and WIC Providers.

The Audience Guides address:

- How does developmental promotion, monitoring, screening and linkage to services ensure all children reach their potential?
- What is developmental promotion, and how do I engage families?
- What is developmental monitoring and screening, and how do I engage families?
- How often should children be monitored and screened?
- How do I select the right screening tool to fit my needs?
- How do I refer families to the right services after screening?

The Focus of the Birth to 5: Watch Me Thrive!

initiative on increasing community capacity to enhance developmental promotion, screening and supports aligns with the mission of Help Me Grow, and Help Me Grow systems can be a valuable resource for health, early learning, and community and social service providers in supporting connection to community-based supports for vulnerable or at-risk children.

Resources Developed for Birth to 5: Watch Me Thrive!

initiative include a *Developmental Screening Passport, A Compendium of Screening Measures for Young Children* (U.S. Department of Health and Human Services, 2014), and a series of Audience Guides that describe the role of various stakeholders in supporting developmental promotion, screening, referral, and linkage, which have been updated by the Help Me Grow National Center and are available in extended form on the **Help Me Grow National Center Partners - Birth to 5: Watch Me Thrive!** webpage. Additional resources can be found in the *Birth to 5: Watch Me Thrive! Resources* section.

Birth to 5: Watch Me Thrive!

Celebrating Developmental Milestones • Implementing Universal Developmental Promotion, Surveillance & Screening
• Improving Early Detection • Enhancing Developmental Supports

Visit the Help Me Grow National Center Partners - *Birth to 5: Watch Me Thrive!* webpage for a complete set of resources:
www.helpmegrownational.org/hmg-partners/watchmethrive/