



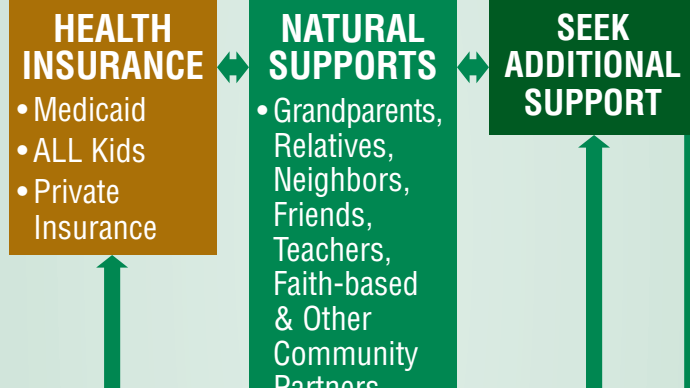
FAMILY (lifespan)

Families are the primary decision makers for children's healthy development. Families are responsible for:

- Choosing culturally and linguistically competent support and service providers
- Setting goals
- Designing, implementing, and evaluating programs
- Monitoring outcomes
- Partnering in funding decisions
- Engaging in policy and procedure governing care for all children

When a **CHILD** demonstrates a need

PARENTS/CAREGIVERS respond to a child's needs by providing care and seeking additional resources



Help Me Grow Alabama Dial 2-1-1

ADVOCACY | MONITOR PROGRESS

DECISION MAKING

DEPARTMENT OF HUMAN RESOURCES

- FOOD ASSISTANCE DIVISION Supplemental Nutrition Assistance Program (SNAP)
- FAMILY ASSISTANCE DIVISION Temporary Assistance for Needy Families (TANF)

dh.alabama.gov

ALABAMA NETWORK OF FAMILY RESOURCE CENTERS

Located around the state to serve and assist families by identifying and addressing barriers to success | anfconline.homestead.com

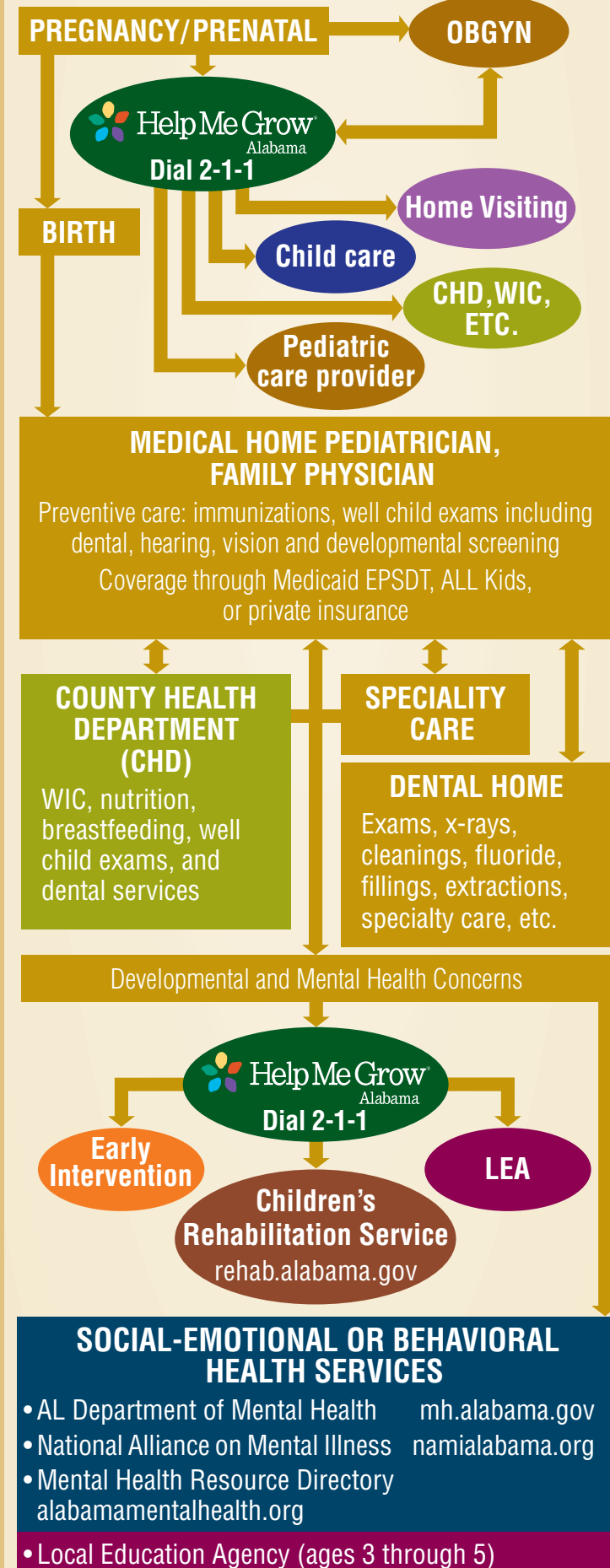
COMMUNITY ACTION AGENCIES

Provide direct social services to families with low and moderate incomes | caaalabama.org



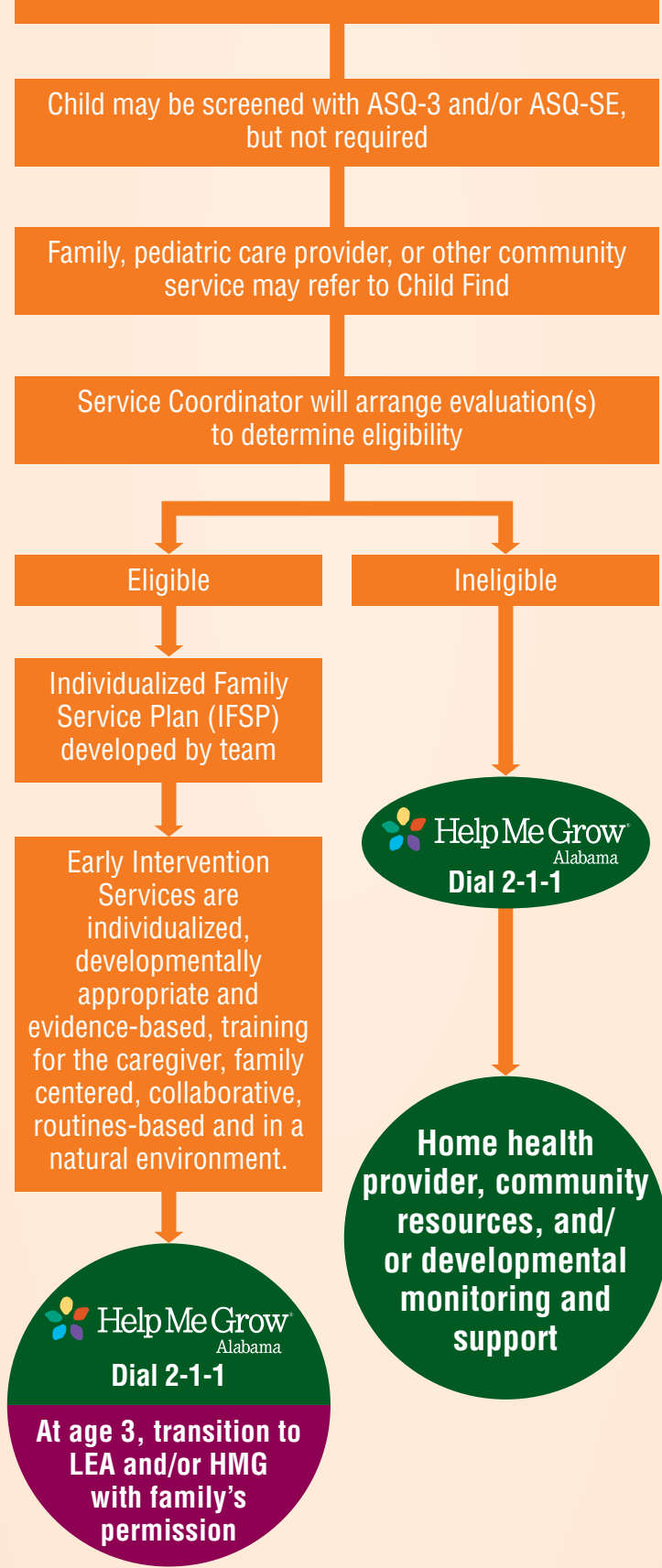
MEDICAL, DENTAL, AND SOCIAL EMOTIONAL SERVICES

Families should utilize preventive care services available, including screenings, and connect to a medical and dental home.



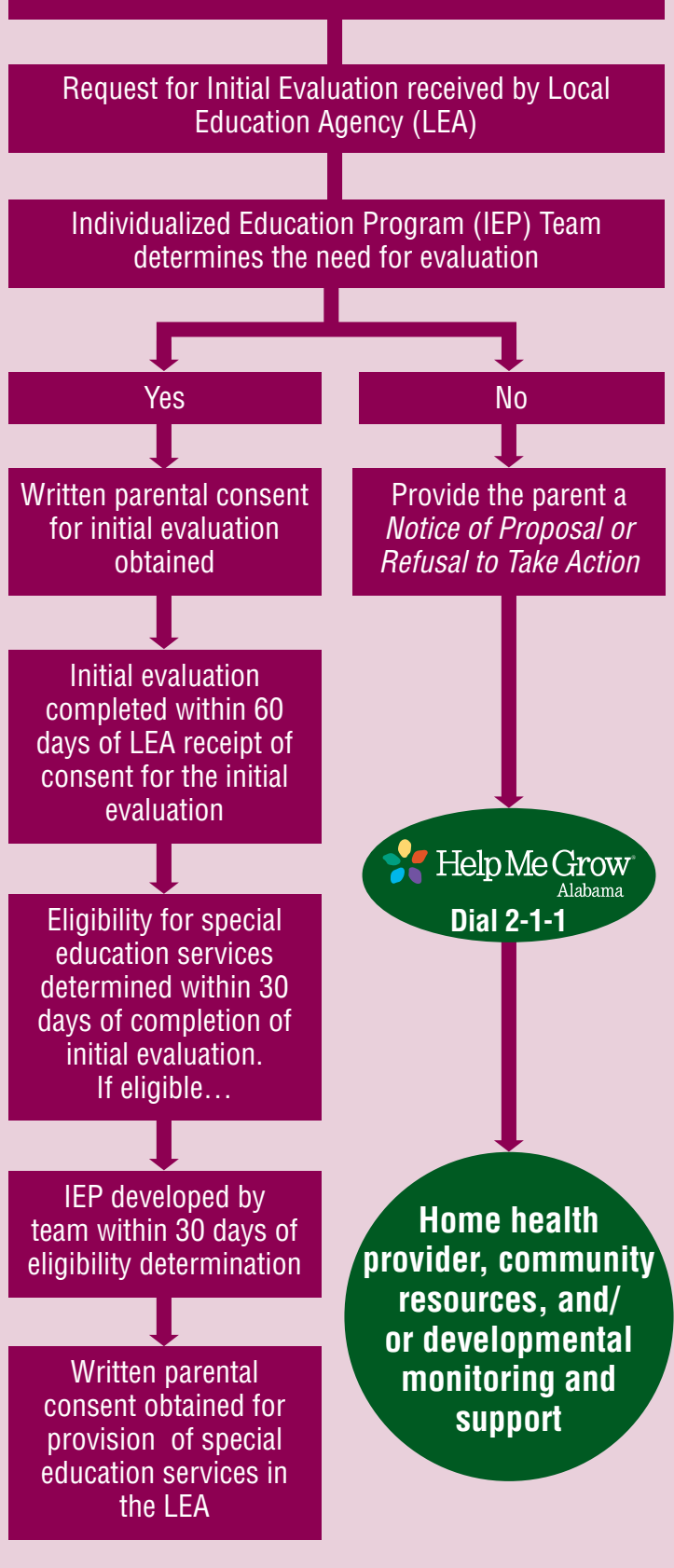
ALABAMA'S EARLY INTERVENTION SYSTEM (ages 0 through 2)

Early Intervention is a voluntary system for children who meet eligibility criteria with developmental delays or conditions known to cause developmental delays in one or more of the following: physical, communication, cognitive, adaptive, social or emotional. rehab.alabama.gov/individuals-and-families/early-intervention



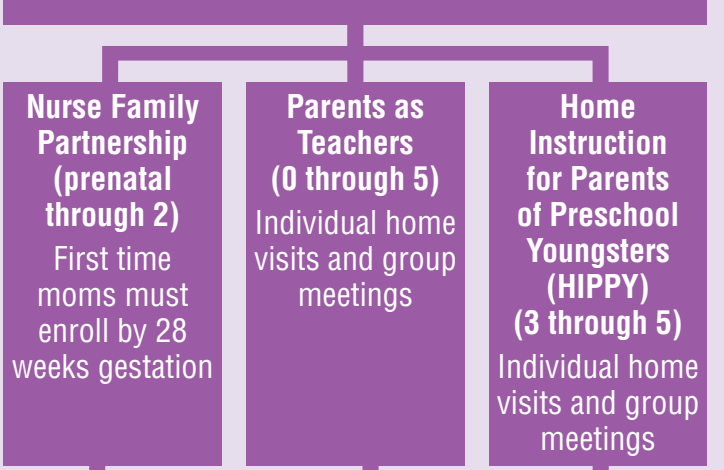
SERVICES FOR PRESCHOOL CHILDREN WITH DISABILITIES (ages 3 through 5)

Special education services are provided for preschool children with disabilities who meet eligibility criteria of the *Alabama Administrative Code*. To qualify, the disability must adversely affect the child's participation and progress in age appropriate activities.



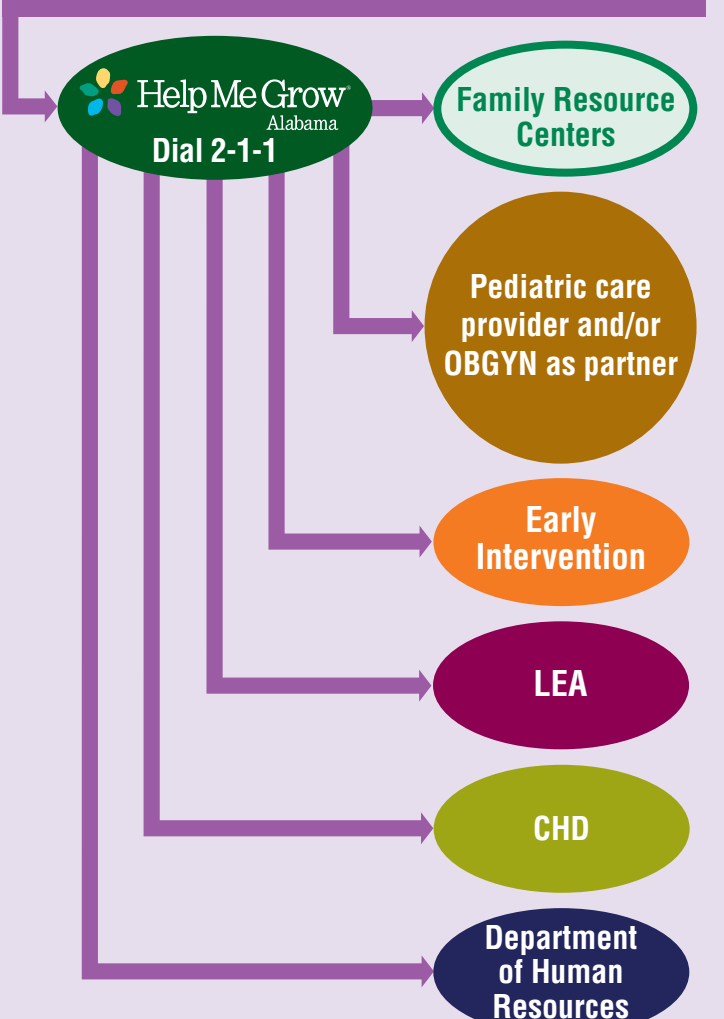
HOME VISITING (prenatal through age 5)

Home Visiting programs exist throughout the state to provide services to help strengthen at-risk families. children.alabama.gov or ctf.state.al.us. Primary models include:



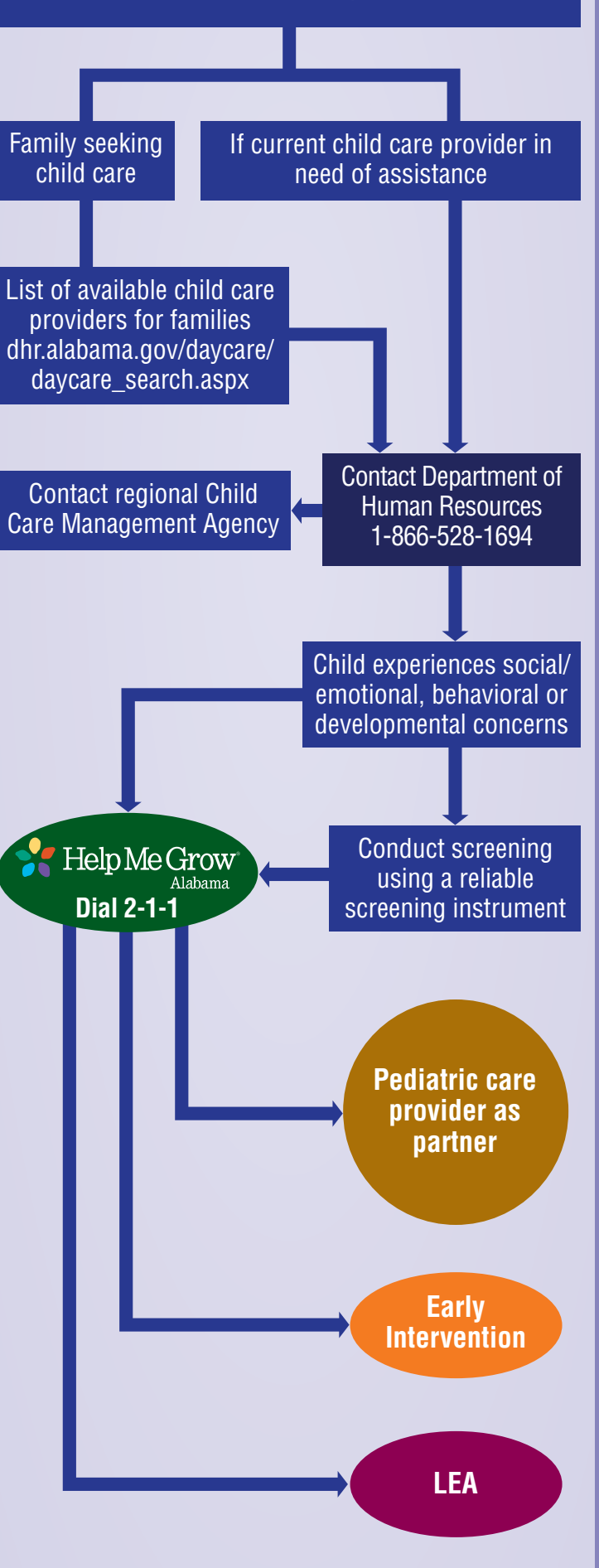
Home Visiting programs conduct screenings that address the following areas:

- Access to Health Care
- Mental Health of Family
- Social- Emotional Development
- School Readiness
- Child Abuse and Neglect
- Domestic Violence
- Parenting Styles and Guidance



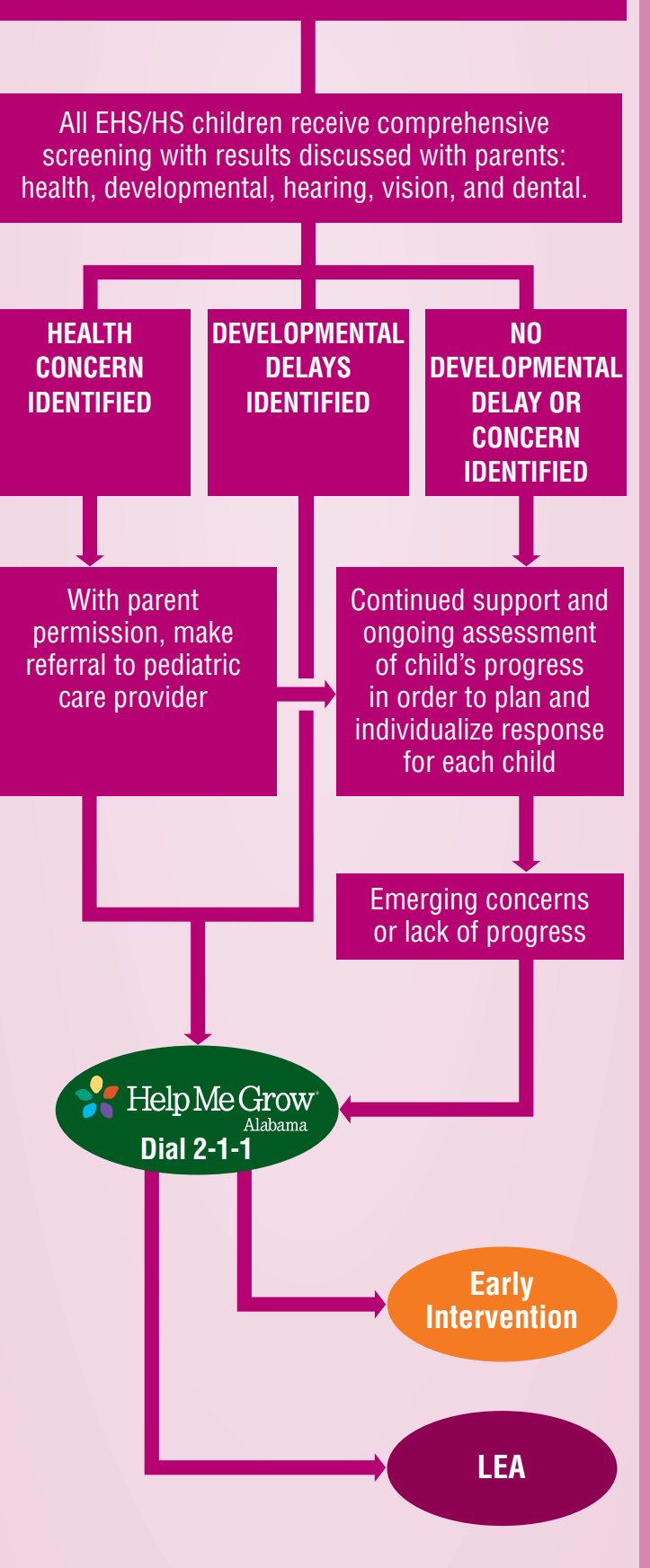
CHILD CARE (age 0+)

Any quality licensed child care center, certified family home, or half day/preschool. dhr.alabama.gov/services/Child_Care_Services/Child_Care_Services_Division.aspx



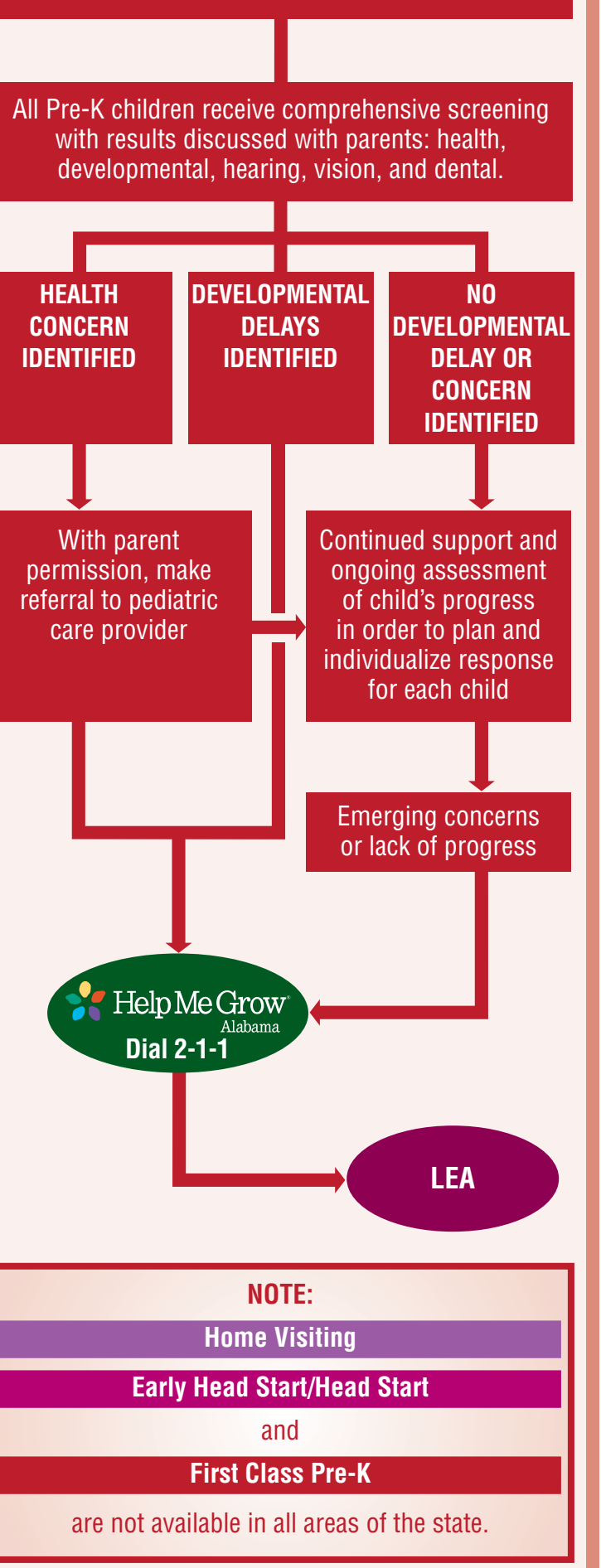
EARLY HEAD START/ HEAD START (prenatal through age 5)

Early Head Start/Head Start (EHS/HS) is a federally funded program that serves low income pregnant women and children through age 5. Programs are designed locally based on community needs, may be center-based or home visiting, and promote school readiness. | children.alabama.gov



FIRST CLASS PRE-K (age 4)

First Class Pre-K is Alabama's state funded pre-kindergarten program. All children who are 4 years old by September 1 of the year and residents of Alabama are eligible. | children.alabama.gov



NOTE:

- Home Visiting
- Early Head Start/Head Start
- and
- First Class Pre-K

are not available in all areas of the state.

ACCESS GUIDE TO EARLY CHILDHOOD SERVICES FOR CHILDREN AND FAMILIES PRENATAL THROUGH AGE 5

The purpose of this guide is to help early childhood professionals and service providers refer young children (prenatal through age 5) and their families to appropriate Alabama services. The vision is for families to have the support they need across all medical, educational, developmental, and social-emotional services.

HELP ME GROW MISSION:

- To promote the optimal development of young children by linking families to information, providing effective care coordination, and facilitating partnerships within the community to improve the accessibility and quality of services for families.

- Help Me Grow Alabama is a free information and referral line that utilizes 2-1-1
- Connects Alabama to help connect families of children birth to age eight to health and developmental resources in their community, as well as developmental monitoring and support. Families may dial 2-1-1, enroll online at helpmegrowalabama.org, or providers can refer families to one of our Regional Care Coordinators.

FAMILY

Parenting Assistance Line is a call line staffed by parenting resource specialists. PAL is for anyone who wants information and support in becoming a more confident parent. 1-866-962-3030 | pal.ua.edu

MEDICAL, DENTAL, & SOCIAL-EMOTIONAL SERVICES

Medicaid 1-800-362-1504 | medicaid.alabama.gov

Well Child Check-Up is a Medicaid program that provides Early, Periodic, Screening, Diagnosis, and Treatment (EPSDT). EPSDT provides preventative health care for children and teens; specialty health care for medically necessary services. medicaid.alabama.gov/content/4.0_programs/4.4.0_medical_services/4.4.3_EPSDT.aspx

ALL Kids: Alabama Children's Health Insurance Program is for children under the age of 19 who do not have health insurance and whose family income is above the Medicaid income level and below 300 percent of the federal poverty level. 1-888-373-5437 | adph.org/allkids/

CHD: County Health Departments provide immunization, infectious disease services, and case management services. Contact your local CHD to determine if well child exams or dental services are provided. adph.org/administration/Default.asp?id=505

WIC: The Special Supplemental Nutrition Program for Women, Infants, and Children (WIC) is administered by CHD; provides services including food benefits, nutrition education, breastfeeding counseling and support, and referrals for pregnant, breastfeeding, and postpartum women, infants, and children up to age 5 who meet the qualifications for participation in the WIC program. 1-334-206-5673 adph.org/wic/

Children's Rehabilitation Service provides quality medical, rehabilitative, coordination and support services for children with special health care needs and their families. 1-800-441-7607 rehab.alabama.gov/individuals-and-families/childrens-rehabilitation-service

Infant and Early Childhood Mental Health Consultation provides support for early childhood programs and parents to address social and emotional concerns of young children. State Coordinator at Department of Early Childhood Education. 1-334-353-2700

EARLY INTERVENTION

Child Find is the statewide, toll-free Early Intervention number. 1-800-543-3098 rehab.alabama.gov/individuals-and-families/early-intervention

CHILD CARE

Office of Child Care Subsidy provides Alabama's low and moderate-income families with equal access to affordable and quality child care services. 1-866-528-1694 dhr.alabama.gov/services/Child_Care_Services/Subsidy_Overview.aspx

Child Care Management Agencies supply resources and referrals for families and child care providers. | dhr.alabama.gov/counties/daycare_agency.aspx

Child Care Quality Enhancement Agencies deliver training and technical assistance for child care providers to improve quality, health, safety, and nutrition. dhr.alabama.gov/services/Child_Care_Services/CCQuality_Enhancement_Agencies.aspx

Don't Be In The Dark About Child Care offers research and recommendations regarding high quality child care. 1-866-711-4025 | alabamachildcarefacts.org

OTHER ALABAMA RESOURCES

2-1-1 Connects Alabama is a statewide call system of information and referral whose mission is to provide easy access to health and human services available throughout Alabama. Dial 2-1-1 | 211connectsalabama.org

Alabama Department of Early Childhood Education coordinates First Teacher Home Visitation programs and First Class Pre-K programs, and houses the Head Start Collaboration Office for the state. 1-334-353-2700 | children.alabama.gov

Alabama Disabilities Advocacy Program (ADAP) is the state's protection and advocacy program that advocates for children with special needs. ADAP provides legal services to Alabamians with disabilities to protect, promote and expand their rights. 1-205-348-4928 | adap.net

Alabama Interagency Autism Coordinating Council is a network of leaders developing a comprehensive system of care for individuals with autism spectrum disorder and their families. autism.alabama.gov

Autism Society of Alabama improves services for persons with autism spectrum disorder and their families through education and advocacy. 1-877-428-8476 | autism-alabama.org

Regional Autism Network works to connect people with autism spectrum disorder, their families, educators, and service providers to the information and/or services that best meet their needs. 1-205-478-3402

Alabama Department of Education provides oversight and special education services for preschool (age 3) to age 21. 1-334-242-9700 AlabamaSpecialEducationServices 1-334-242-8114 | www.alsde.edu

OTHER ALABAMA RESOURCES *Continued*

Alabama Department of Child Abuse and Neglect Prevention the state's Children's Trust Fund, advocates for children and the strengthening of families throughout Alabama. 1-334-262-2951 | ctf.alabama.gov

To **Report Child Abuse and Neglect** contact your county Department of Human Resources. dhr.alabama.gov/counties/county_select.aspx

Family Voices of Alabama provides support and information to families who have children with special health care needs and/or disabilities, and the professionals who work with them. 1-877-771-3862 | www.familyvoicesal.org

First 5 Alabama is the Alabama Association for Infant and Early Childhood Mental Health and supports professionals in obtaining credentials and Endorsement® to provide consultation services in early childhood settings. 1-866-711-4025

NATIONAL WEBSITE RESOURCES

American Academy of Child and Adolescent Psychiatry: aacap.org

American Academy of Pediatrics: healthychildren.org

Autism Society of America: autism-society.org

Autism Speaks: autismspeaks.org

Born Learning: bornlearning.org

Center for Child and Human Development: gucchd.georgetown.edu

Center for the Study of Social Policy – Strengthening Families Initiative: strengtheningfamilies.net

First Signs: firstsigns.org

Help Me Grow National: helpmegrownational.org

Learn the Signs. Act Early: cdc.gov/ncbddd/actearly/index.html

National Federation of Families for Children's Mental Health: ffcmh.org

National Institute of Mental Health: nimh.nih.gov/index.shtml

Reach Out and Read: reachoutandread.org

Substance Abuse Mental Health Services Administration: samhsa.gov

Vroom supports parents and caregivers with ways to boost early learning through creative tools and materials: joinvroom.org

Zero to Three: zerotothree.org



REGIONAL MAP

- HMG Northwest Alabama**
Phone: 256-764-5892 | Fax: 256-764-0088
Email: helpmegrownwal@gmail.com
- HMG North Alabama**
Phone: 256-705-6768 | Fax: 256-716-0663
Email: helpmegrow@csna.org
- HMG West Alabama**
Phone: 205-348-4026 | Fax: 205-348-0660
Email: helpmegrow@ches.ua.edu
- HMG Central Alabama**
Phone: 205-458-2070 | Fax: 205-458-2196
Email: helpmegrow@uwca.org
- Northeast Alabama**
Phone: 256-547-2581 | Fax: 256-546-4360
Email: helpmegrowec@uwoec.org
- HMG River Region**
Phone: 334-264-3335 | Fax: 334-264-9182
Email: helpmegrow@handsonriverregion.org
- HMG East Alabama**
Phone: 334-745-5540 | Fax: 334-745-5606
Email: helpmegrow@unitedwayofleecounty.com
- HMG South Alabama**
Phone: 251-431-5100 | Fax: 251-431-5117
Email: helpmegrow@lifelinesmobile.org
- HMG Wiregrass**
Phone: 334-836-1963 | Fax: 334-836-1965
Email: helpmegrow9@gmail.com



PLEASE HELP US IMPROVE THIS GUIDE!

Visit smartstartalabama.org/feedback or email comments to info@smartstartalabama.org

For more information:
Alabama Partnership for Children
smartstartalabama.org
2529 Bell Road • Montgomery, AL 36117
1-334-271-0304 • 1-866-711-4025

This guide was made possible by:
Alabama Department of Mental Health: Project LAUNCH
Alabama Department of Public Health: Early Childhood Comprehensive Systems
Alabama Partnership for Children
Help Me Grow Alabama Leadership Team

"Every Alabama Child Will Have the Opportunity to Succeed in Life"