



Help Me Grow National Webinar

Help Me Grow Networking Meetings: Lessons Learned!

www.HelpMeGrowNational.org

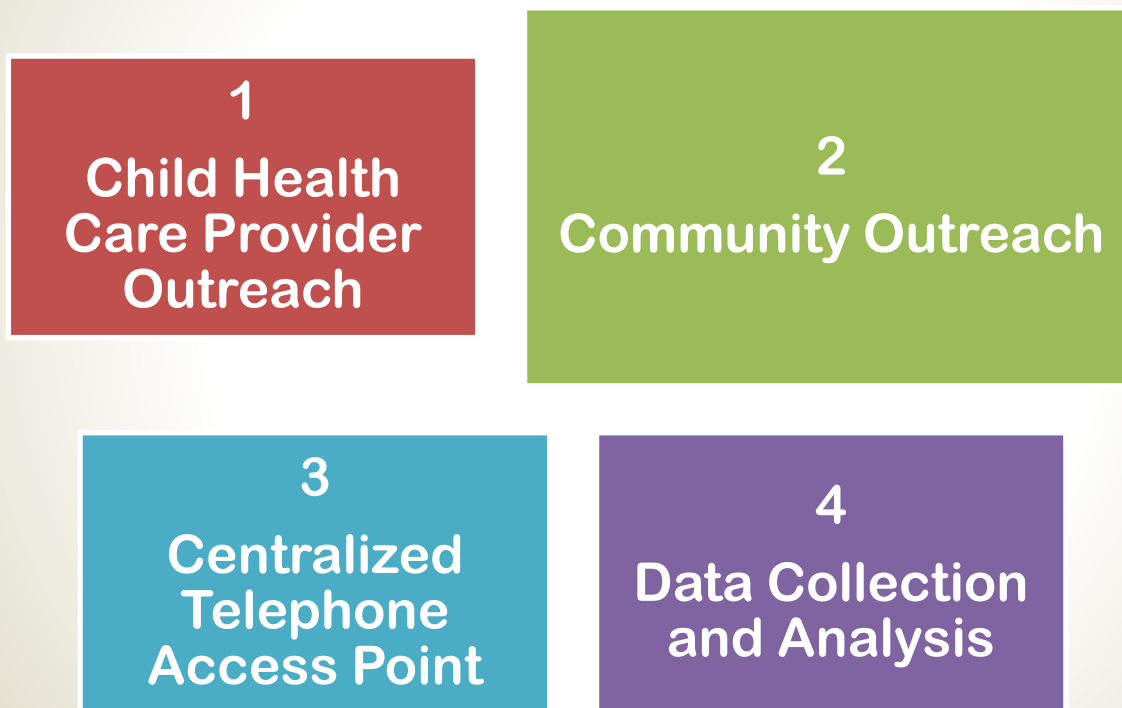
October 1, 2012

3:30 PM – 5:00 PM (Eastern Daylight Time)

** Supported by a generous grant from the WK Kellogg Foundation*



The *Help Me Grow* System



Webinar Overview



Presenters:

- **Luz Rivera**, Prevention Primary Services Coordinator, CT Children’s Trust Fund, Department of Social Services
- **Rebecca Hernandez**, Manager, *Help Me Grow* – Orange County, California
- **Barbara Leavitt**, Program Manager, *Help Me Grow-Utah* Director, Early Childhood Initiatives, United Way of Utah County

Help Me Grow

Statewide Community Network Meetings

Luz Rivera, *Community
Development Liaison*

National *Help Me Grow Webinar*
October 1, 2012

What is a *Help Me Grow* community network meeting

- Coordinated regionally based meeting
- Community Development Liaison staff coordinates & facilitates local meetings
- Community Development Liaison identifies and works in partnership with other agencies to offer local meetings
- Allows opportunity to address community need on a specific topic and/or concerns

What is a *Help Me Grow* community network meeting

- Identify means to break through identified gaps & barriers
- Necessary to seeks participants input & feed back
- Builds opportunity for community agencies to network and enhance the knowledge of each other's program
- Reinforce the Child Development Infoline to ensure early identification and intervention of young children

How to coordinate the *Help Me Grow* community network meeting

- Set consistent location, time, and frequency
- 2 hour minimum
- Send out notices no later than 3 weeks ahead and another notice as a reminder
- Arrange for speakers per community providers, needs, or concerns
- Provide agendas, evaluation forms and surveys when appropriate
- Resource table; flyers, brochures, business cards etc.,

What happens at Community Network Meetings

- Community Presentations:
 - Existing programs, services, and resources
- Children's Issues:
 - Learning, development, behaviors, physical and mental health
- Networking and problem solving
- Listserv: communication within communities
- Connecting back to *Help Me Grow* at Child Development Infoline

Who participates in the *Help Me Grow* community network meetings

- Home visitors
- Early care educators
- Advocates
- Medical and/or health providers
- Social workers
- Parent educators
- Parents

Anyone working with families with young children are encouraged to participate

Why the *Help Me Grow* community network meeting

- Builds stronger relationships & communities
- Improves everyone's ability to do their work
- Opportunity to problem solve
- Formal and informal network
- Support providers in identifying developmental concerns & connect families & children to services

Connecticut *Help Me Grow* community network meeting

- 4 Community Development Liaisons
- 13 community network meetings
- Frequency
- Current Partners
- Statewide listserve
- Top Stories

Help Me Grow – CT Community Networking Meeting Calendar



Children's Trust Fund Division of the Department of Social Services

Help Me Grow

January – December 2012 Regional Community Network Meetings
Connecting Families to Community Services

Region: Western CT

Program Liaison: **Haley Scott** 860-424-5626 or haley.scott@ct.gov

<p>Bridgeport (offered with Child FIRST & the Child and Family Guidance Center) City of Bridgeport Social Services 752 East Main St., 2nd Floor Bridgeport 9:00 – 11:00 a.m.</p>	<p>Danbury (offered with Early Childhood Partnership of Danbury and Danbury's Promise for Children Partnership) Education Connection, Danbury 345 Main Street 11:30am-1:30pm</p>	<p>Norwalk (offered with Norwalk Healthy Families Collaborative & Norwalk Immunization Action Plan) South Norwalk Police Station 11 Monroe St., Norwalk 11:30am - 1:30pm</p>
<p>March 12 June 11 September 10 December 10</p>	<p>March 28 May 23 (This HMG lunch is at Tarrywile Park & Mansion in Danbury) September 19 December 19</p>	<p>March 1 June 7 September 6 December 6</p>

Questions?

Never doubt that a small group of thoughtful, committed citizens can change the world; indeed, it's the only thing that ever has.

- Margaret Mead



Jump Start Alliance Luncheons



POWER DRILL

Partners for Infants and Children

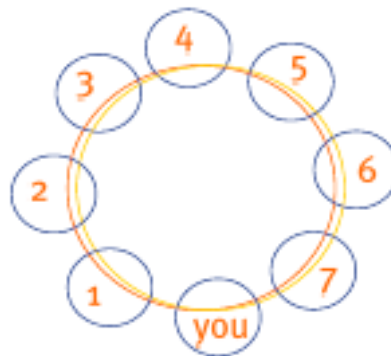


3 name _____
agency _____
learn _____

4 name _____
agency _____
learn _____

5 name _____
agency _____
learn _____

2 name _____
agency _____
learn _____



6 name _____
agency _____
learn _____

1 name _____
agency _____
learn _____

7 name _____
agency _____
learn _____





2:00

- What is one item in your house that you should really throw out but probably never will?
- As a form of punishment, children are sometimes deprived temporarily of something they cherish. If you were going to be punished in this way as an adult, what item would you least want to loose?



Breakfast Topics

Date	Topic
Nov 2009	Intro to HMG
Feb 2010	Community Café with Parents
Aug 2010	Panel of Latino Outreach
May 2010	Autism
Nov 2010	Changing Demographics
Feb 2011	Medical Home Portal
May 2011	Resources
Aug 2011	Early Literacy
Nov 2011	Women in Education Project
Jan 2012	Help Me Grow National
May 2012	Dangers of Vaccine Preventable Diseases
Aug 2012	Vision Development – InfantSee
Nov 2012	Dental Health



come like
collaboration
connections time
people
resources providers feel community
topic talk
good
networking
information
start know



Networking Exercises

- Like the memorable building and activities when you do something, it sticks in your head
- More time to talk and interact
- Questions promote conversations



What are the best things about NB?

- Networking with other providers
- Meeting other professionals to benefit children and families
- Learning about other programs you are not familiar with
- Builds the community feel. Makes the city feel more like family because you get to know people
- More personal connections to other groups
- Stretches barriers outside of the established resources



What are the areas of improvement?

- Brag and borrow
- Everyone gets 5 minutes to do a presentation to the whole group
- Speed dating – keep switching, ask questions, do after people already know what you do
- Follow-up and more opportunity to discuss with other people
- Invite the public to come in and learn about these things and programs that come
- Allow enough time for networking.
- Vary the time and places.
- Give people an idea of who's attending for arrangement of carpools.



Conclusions

- Survey participants on possible topics and presenters
- Network-only breakfast where no education component is provided
- Extend the meeting time to those who want to stay afterwards
- Consider periodic Networking Luncheons as opposed to just breakfasts



Questions?



Help Me Grow
ORANGE COUNTY

HMG Networking Meetings: Lessons Learned
Rebecca Hernandez, MEd
October 1, 2012

Presentation Objectives

- Learn about our Networking Breakfast: Connection Café history and logistics
- Understand how feedback was gathered and evaluation was conducted
- Learn about the results of the evaluation “Orange County Connection Cafes, The First Five Years”
- Hear about evaluation recommendations and lessons learned

History of our Connection Café

- First Connection Café (CC) held March, 2008
- Conducted 29 individual CCs from March 2008 through May 2012
- Carry out 6 CCs per fiscal year with 2 held in each region of our county
- Coordinated by the Community Liaison assigned to the region
- Feedback from all are included in the evaluation

What Happens At Each Café?

Consistent networking events among agencies that provide developmental and behavioral services to children and families in Orange County

- Update on HMG services
- Family showcase
- Networking activity
- Featured guest speaker
- Resource table and access to the countywide resource inventory



How Was Information Gathered?

- Feedback form initiated at first CC
- Distributed in packet at time of sign-in
- Questions gathered information:
 - to help with ongoing outreach efforts and future CC activities
 - to learn information about participant
 - to gauge usefulness of Café, speaker and networking activity
- Strongly encouraged participants to complete at conclusion of event and collected at the door



Help Me Grow
ORANGE COUNTY

Connection Café Feedback Form

Date: _____

1. Is this the first time you've attended a Connection Café? Yes / No

2. On a scale from 1-5, rate the value of the networking activity

1	2	3	4	5
Not Valuable				Extremely Valuable

3. On a scale from 1-5, rate the likelihood you will follow up with someone you met today

1	2	3	4	5
Unlikely				Very Likely

4. On a scale from 1-5, rate how much you learned from the information presented by the guest speaker

1	2	3	4	5
Very little				Very Much

5. On a scale from 1-5, rate how useful was the information presented by the guest speaker

1	2	3	4	5
Not Useful				Extremely Useful

6. On a scale from 1-5, rate how useful was the Connection Café overall

1	2	3	4	5
Not Useful				Extremely Useful

7. Do you actively use Facebook? Yes / No

8. If yes, do you "like" Help Me Grow? Yes / No

9. Do you actively use Twitter? Yes / No

10. Do you have any suggestions for future Connection Cafés?

11. Would you like to host a Connection Café? Yes / No

If yes, please provide:

Name:	Organization:
Email:	Phone:

Additional Comments:

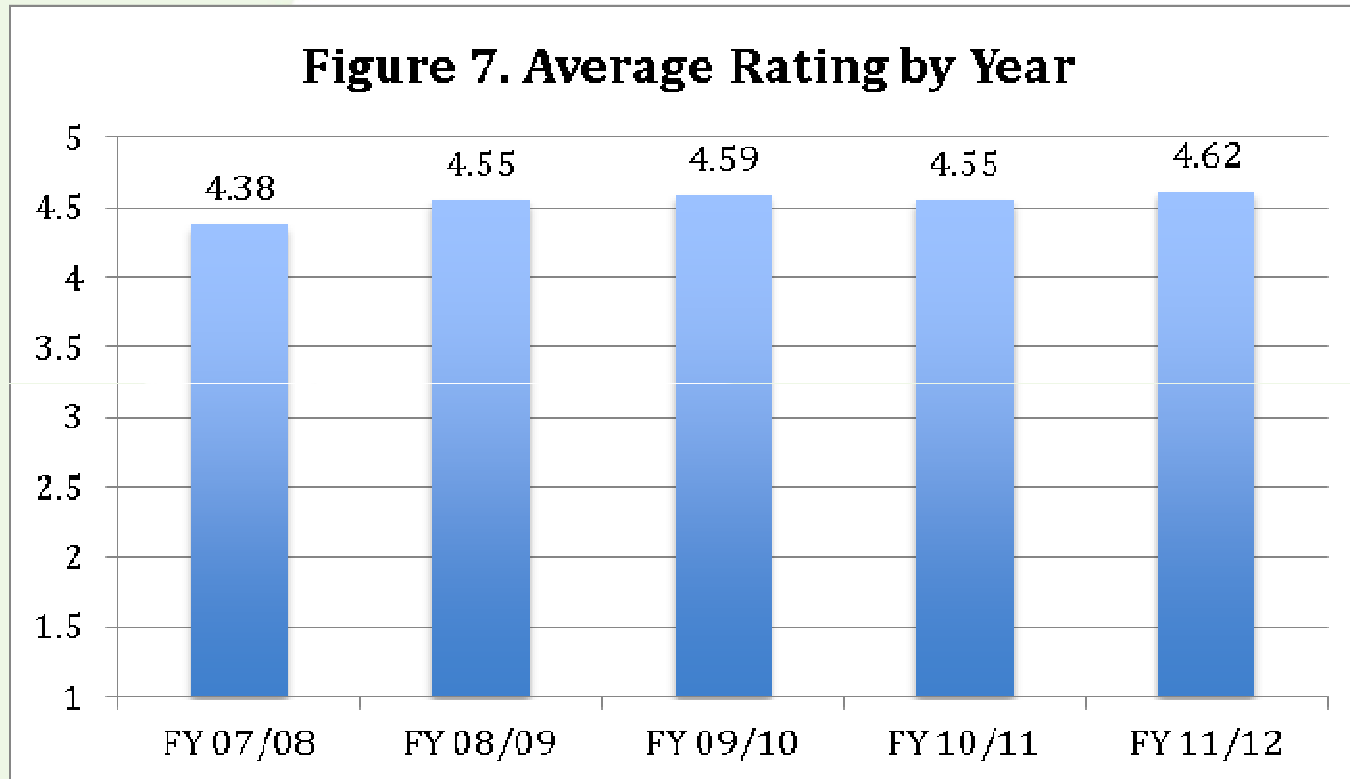
What Did The Evaluation Include?

- Looked at attendance compared to
 - time of year
 - number of participants per organization
 - topic of speaker
 - location/region of county
- Perceived value of the networking and the commonalities for highest and lowest scoring activity
- Reported usefulness of topic of guest speaker

Results of Likert-style Questions

Question	Date Introduced	Number of Responses	Average rating	Number and percent of low ratings*	
The value of the networking activity	September 2009	651	4.48	9	1.4%
The likelihood you will follow-up with someone you met today	March 2011	320	4.41	10	3.1%
How much you learned from the information presented by the guest speaker	March 2011	323	4.42	10	3.1%
How useful the information presented by the guest speaker was to you	March 2011	324	4.48	9	2.8%
How useful the Connection Café was overall	April 2008	1035	4.56	7	0.7%

How Useful Was The CC Overall?



Networking Activity: Commonalities

High score > 4.60

- Agencies were named and described so participants learned specific information
- Participants received guidelines on what to ask/look for during the activity
- Participants moved around and interacted with each other
- Highlights about agencies were shared with the entire group at the conclusion of the activity

Low score < 4.40

- Activities required prior knowledge of agency making it difficult for some to participate
- Minimal information was shared about the agencies
- No personal interaction among participants
- No summary of information on the programs at the end of activity
- One activity was in an auditorium style seating

Recommendations

- Overall comments and scores are very positive and show great interest in having the CCs continue
- Continue to review feedback forms for presentation ideas
- Plan networking activities that share information rather than test knowledge
- Reach out to organizations that have attended only once
- Continue to schedule most CCs in October, November, February and March
- Keep holding CCs throughout Orange county because worthwhile opportunity for education and networking

Questions and Answers



Rebecca Hernandez, MEd
Program Manager
www.helpmegrowoc.org

Questions?

Closing

Joanna Bogin

Reminders



**Next Help Me Grow National Webinar:
Coordinating the Care Coordinators in your State: Learn about
Hartford CT's Care Coordination Collaborative
November 14th , 2012**



**4th Annual *Help Me Grow* National Forum (April 10-12)
Provo, Utah**

For more information on *Help Me Grow*, please visit our
website: www.HelpMeGrowNational.org