

## The Delaware Model



### Transforming Maternal Child Health (MCH)

#### MCH Integration:

- ↑ Vertically integrated across levels of care,
- Horizontally across sectors,
- ↔ Longitudinally through the life course,
- Improve Service Coordination,
- Build Multi-Sector collaborative partnerships,
- Understand the ROI of programs.

### ACA MIECHV Home Visiting

- Develop a continuum of home visiting programs (HFA, NFP, PA T &, Early Head Start).
- Designed to improve pregnancy outcomes, parenting skills and early childhood health and development.
- Pregnant women, families with young children will participate in time series evaluation to determine impact of HV.
- 211 HMG serves as centralized point of access.

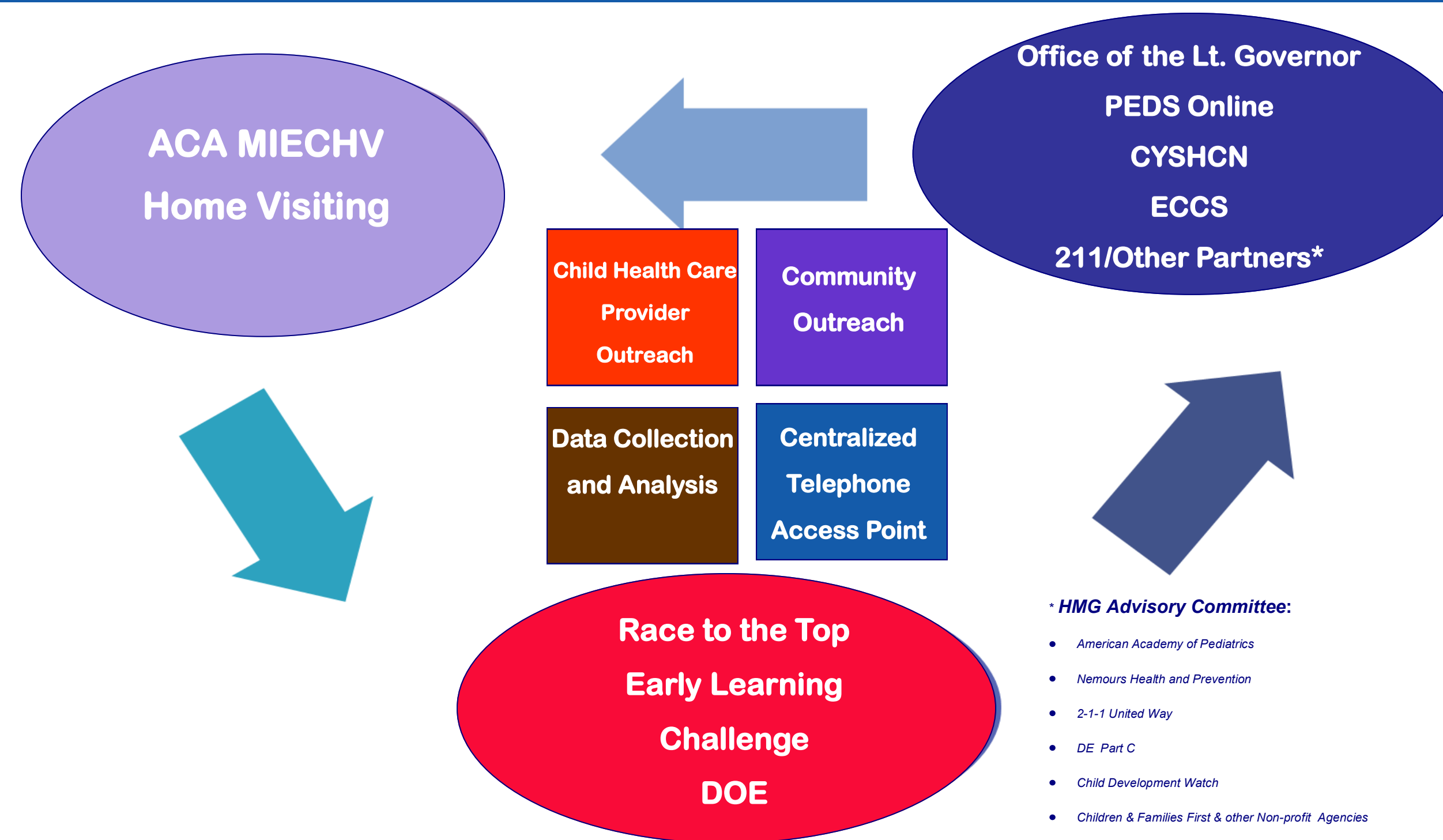
### Office of the Lieutenant Governor

- Commitment to and Advocacy of children's issues.
- Improving state's schools and access to health coverage.
- Protecting abused & neglected children.
- Improving services to children with disabilities.
- Support of HMG Conceptual Model and Implementation as HMG champion.
- Increased developmental screening and surveillance for all young children.

### Race To The Top—Department of Education

- HMG Expansion
- 1. **Child Health Care Provider Outreach**
  - Bolster Health Provider Outreach Strategies,
  - Parent Evaluation of Developmental Status (PEDS Online).
- 2. **Family and Community Engagement**
  - 211/HMG I&R Call Specialist,
  - Community Health Workers.
- 3. **Follow-up Services**

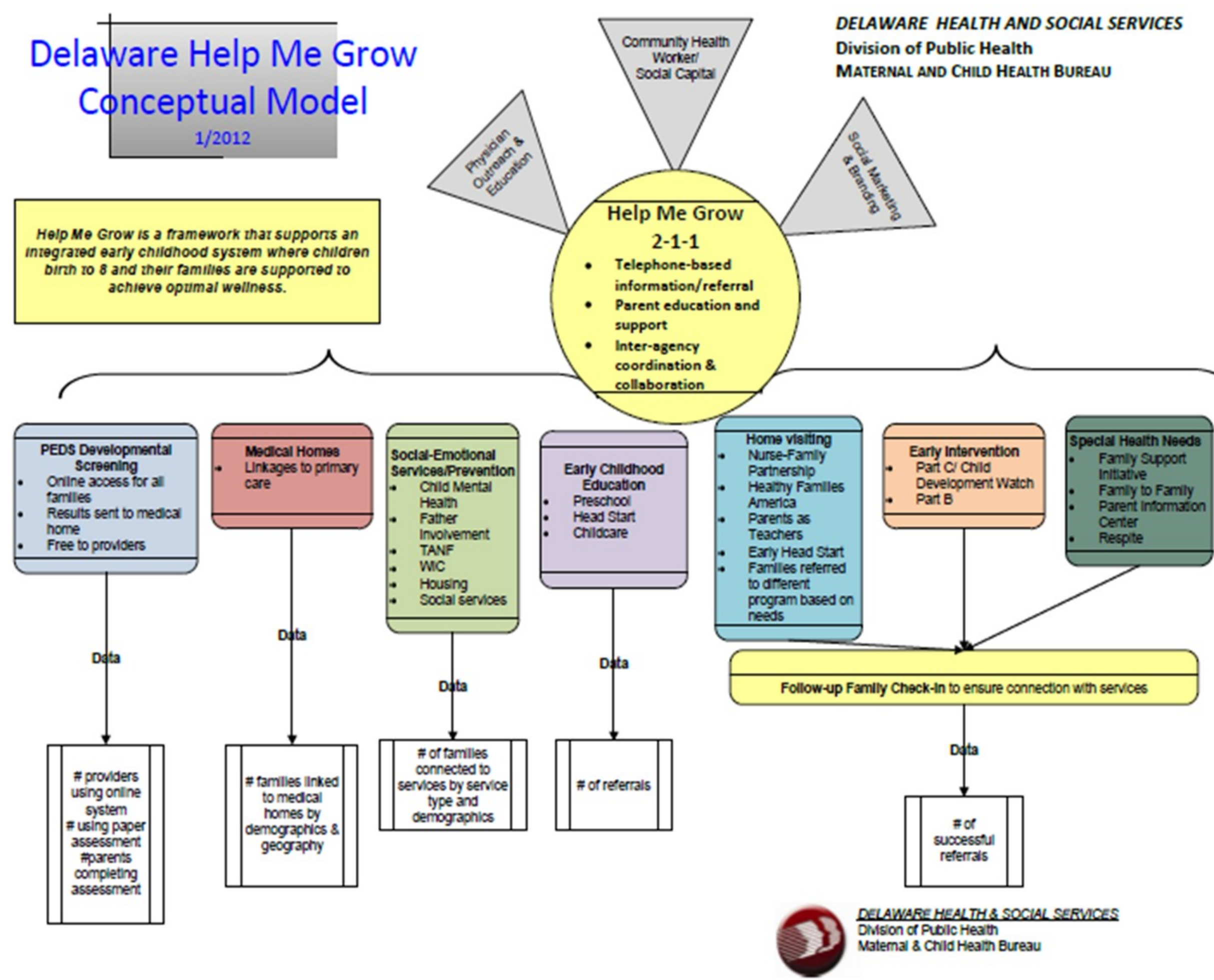
### System to Support All Children's Development



#### HMG Advisory Committee:

- American Academy of Pediatrics
- Nemours Health and Prevention
- 2-1-1 United Way
- DE Part C
- Child Development Watch
- Children & Families First & other Non-profit Agencies
- Parents
- Family SHADE
- Dept of Education
- Children's Department

### Delaware Help Me Grow Conceptual Model



### Developmental Screening- PEDS Online

- Educate pediatricians and family practitioners on the importance of early identification and referral for young children at-risk for developmental delay.
- The importance of enhancing protective factors for children living in high risk environments (i.e. referrals to 211/Help Me Grow; Sign up for PEDs).

### Parents' Evaluation of Developmental Status -PEDS Online

- Evidence-based. Saves time, Reimbursable.
- Assures accuracy in the detection of developmental-behavioral delays in children.
- Provides test results, billing and diagnosis codes, summary reports for parents, referral letters (In real-time).
- Provider portal available on Delaware DPH website.

#### 3 approaches to using PEDS online:

- Self-administered by parent on home computer, office kiosk,
- Office staff administer tool as parent responds,
- Paper-pencil format administered by parent in waiting room.

### CYSHCN- Family SHADE

- An alliance of 40+ organizations and agencies committed to working together to improve the quality of life of children and youth with special health care needs (CYSHCN) by improving access to information and services in Delaware.
- Identify statewide programs/services for children and youth birth to 21 with chronic conditions requiring more health and related services than children same age.
- Plays important role in helping CYSHCN and their families in accessing medical homes, insurance, screening services, organized service system and transition services/support.

