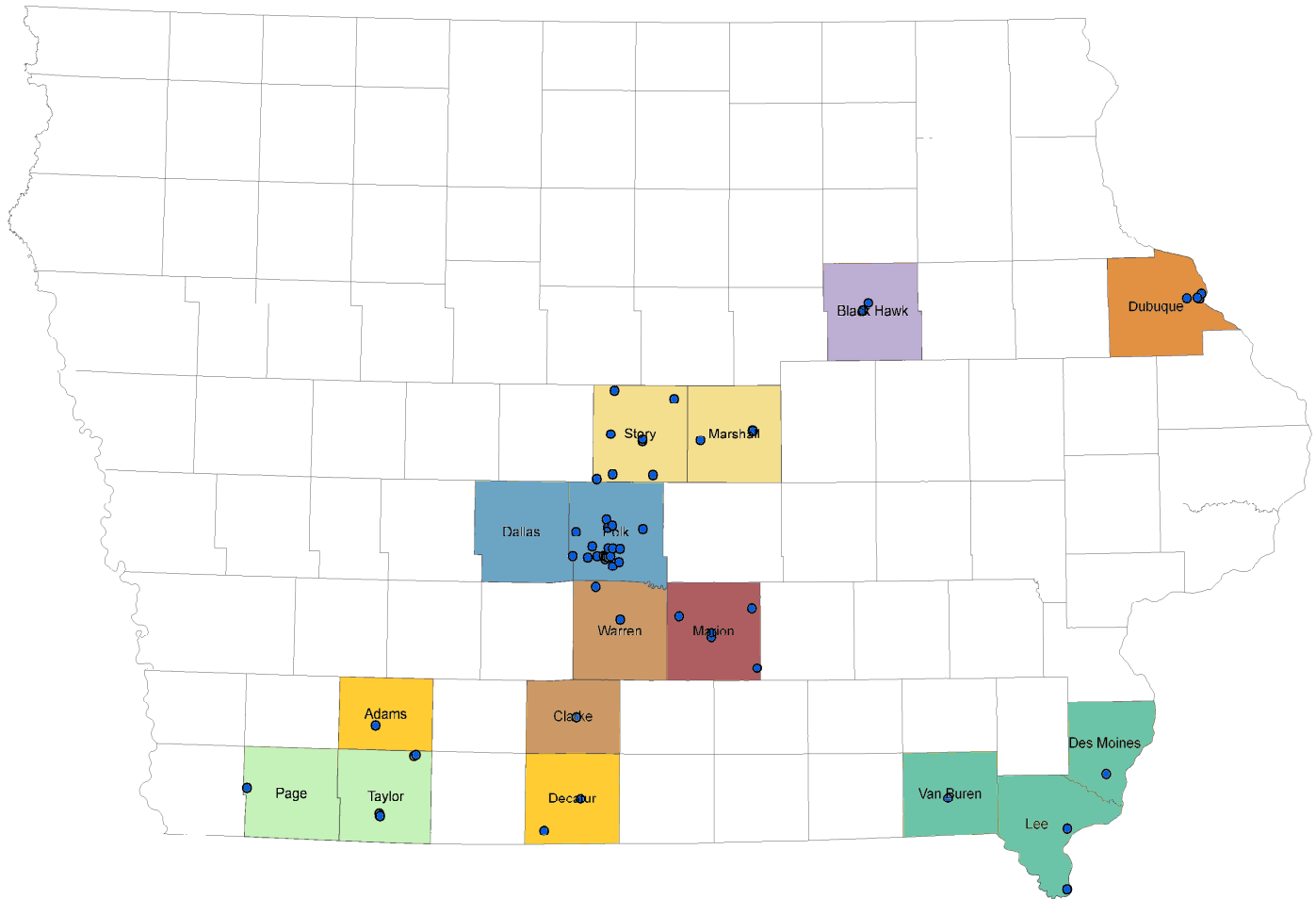




## Participating Counties and Primary Care Practice Locations



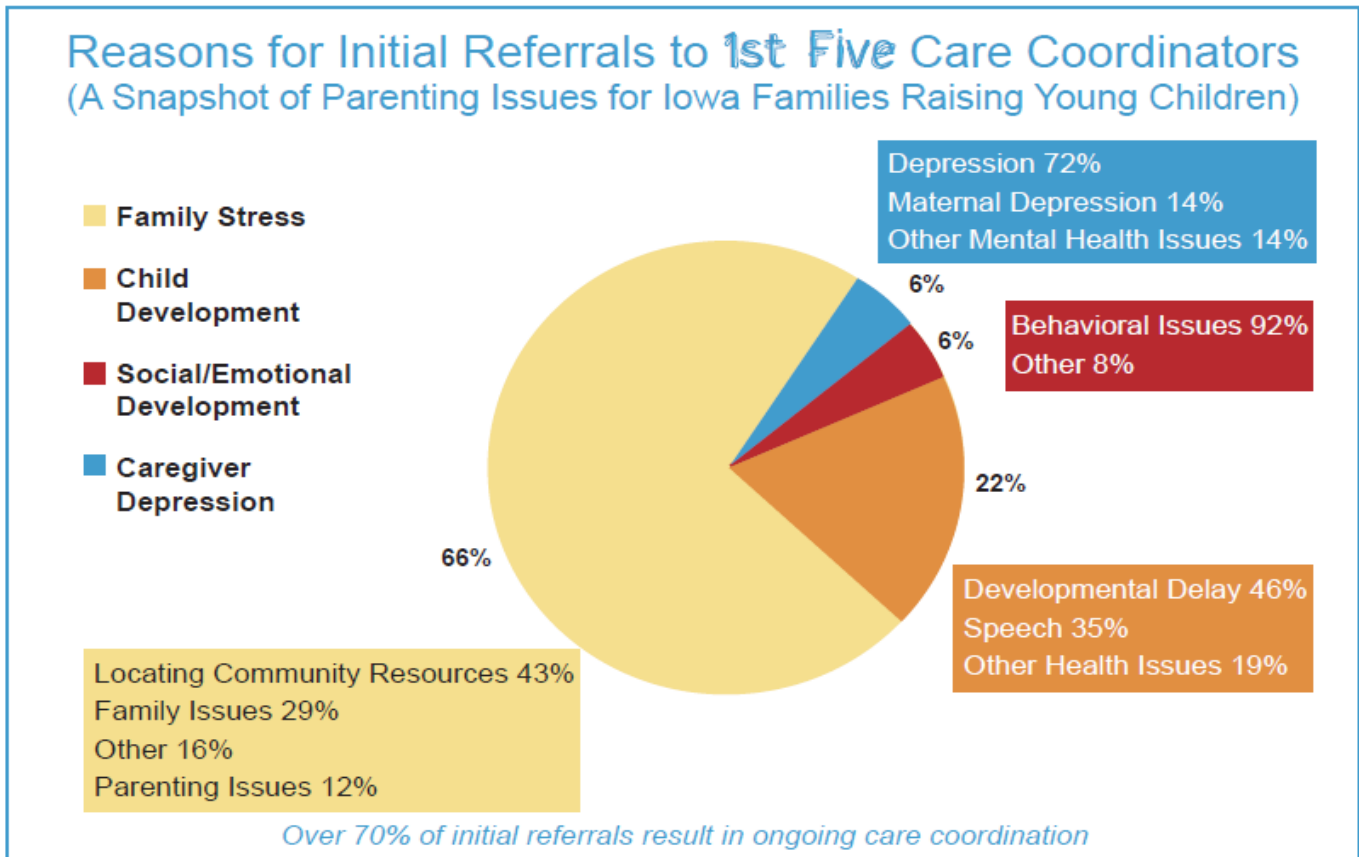
\* Participating medical practices are identified with blue markers. Map is current as of November 2010.  
For a current map of participating counties and practices, visit:

<http://www.idph.state.ia.us/1stfive/>

(Click on "Participating Providers")

Currently, 71 medical practices, representing 280 providers, are involved in the 1<sup>st</sup> Five initiative, impacting 75,000 children birth to five.

## 1<sup>st</sup> Five Evaluation Highlights



### Standardized Assessments

Using a standardized assessment, 78% of the reasons for a medical practice referral to 1<sup>st</sup> Five were for caregiver depression, family stress and behavioral concerns. Had 1<sup>st</sup> Five medical partners not asked these standardized questions, families most likely would not have been referred and linked to services early on addressing these risk factors.

### Referrals to 1<sup>st</sup> Five

For every initial referral into 1<sup>st</sup> Five, an average of three additional referrals are identified by the 1<sup>st</sup> Five care coordinator to services and resources upon contacting the family.

### Provider Outcomes and Satisfaction

Providers involved with the 1<sup>st</sup> Five Initiative have moved toward more standardized surveillance and screening activities in their practices along with the inclusion of maternal depression and family stress questions. Prior to involvement with 1<sup>st</sup> Five only 33% reported universal surveillance activities. After 1<sup>st</sup> Five involvement, that number rose to almost 92%. Providers report a high level of satisfaction regarding their involvement in the 1<sup>st</sup> Five Initiative (1.70 on the following Scale: 1-Excellent, 5-Poor).