

Help Me Grow Western Summit



Help Me Grow: Opportunities for Sustainability

- ✦ Overview and Context – Amy Fine
- ✦ Home Visiting and Early Childhood Systems –Lorrie Grevstad
- ✦ Project LAUNCH – Patsy Hampton
- ✦ Medicaid – Gina Robinson

Friday, October 14, 2001

Portland, Oregon

Federal Home Visiting Program



- Maternal Infant Early Childhood Home Visiting (MIECHV) Program
 - Legislative Objectives
 - Goals
 - Benchmarks
 - Opportunities

MIECHV Legislative Objectives



- to strengthen and improve the programs and activities carried out under Title V of the Social Security Act;
- to improve coordination of services for at-risk communities; and
- to identify and provide comprehensive services to improve outcomes for families who reside in at-risk communities.

Home Visiting Program Goals and Benchmark Areas



- Improvements in maternal and prenatal health, infant health, and child health and development;
- Increased school readiness;
- Reductions in the incidence of child maltreatment;
- Improved parenting related to child development outcomes;
- Improved family socio-economic status;
- Greater coordination of referrals to community resources and supports; and
- Reductions in crime and domestic violence.

Additional Program Goals



- Support the development of statewide systems in every State to ensure effective implementation of evidence-based home visiting programs grounded in empirical knowledge
- Establish home visiting as a key early childhood service delivery strategy in high-quality, *comprehensive* statewide early childhood systems in every State
- Foster collaboration among maternal and child health, early learning, and child abuse prevention leaders in every State
- Promote collaboration and partnerships among States, the Federal government, local communities, home visitation model developers, families, and other stakeholders

Opportunities Before Us...



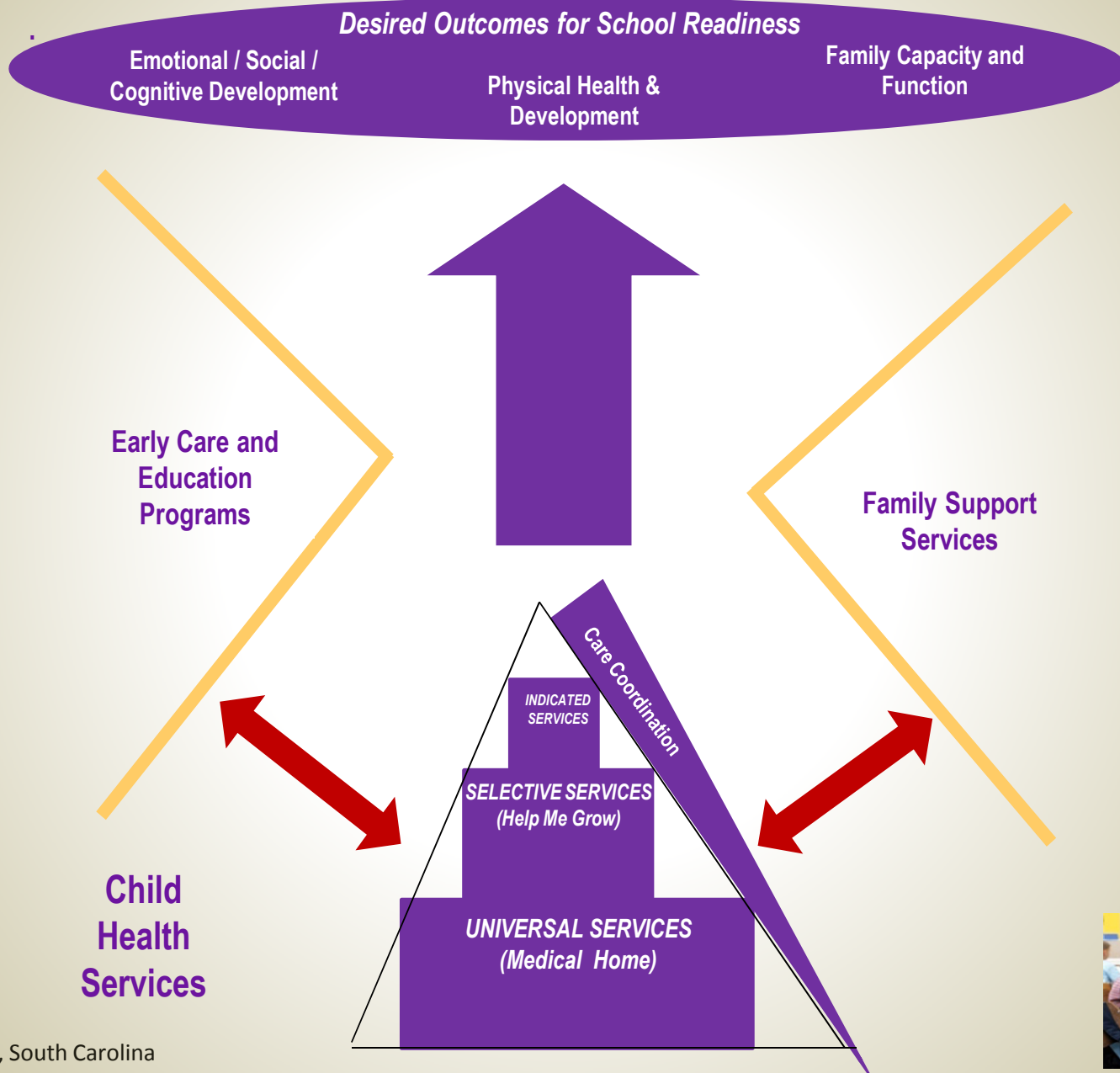
- **Context**

- ✦ Help Me Grow (HMG)
- ✦ Federal Maternal Infant Early Childhood Home Visiting Program (MIECHV)
- ✦ Project LAUNCH (PL)
- ✦ Early Childhood Comprehensive Systems (ECCS)
- ✦ Race to Top (RTT)

- **Value-add**

- ✦ Systems Level
- ✦ Service/Program Level

Child Health Services Building Blocks



Help Me Grow and Home Visiting



- Both systems level and program level
- Mutually beneficial – 2 way
 - Intake and screening
 - Resource & referral
 - Family support
 - Community linkage and support
- Early Childhood Systems

HMG Opportunities with Home Visiting



- Home visitors refer families directly to HMG
- Home visitors obtain referrals for families via HMG
- HMG refers children/families to HV programs
- Home visitors participate in HMG networking
- HMG outstations care coordinators at HV programs such as Early Head Start, care coordinators use HMG data system, participate in same activities as on-site coordinators.

HMG & Implications for Home Visiting



Shared referral/linkage resources can:

- Enhance the work of individual HV programs, by providing more comprehensive inventory for referral/linkage; and by working w/families and HV to connect families to needed services.
- Provide support and information for home visitors through networking.
- Be a source of referrals **to** HV programs & a source to refer **from** HV to other EC services.
- Identify emerging, community-wide service gaps to better meet needs of children.

HMG & Implications for Home Visiting



- Home visiting has an important role to play in helping children and families thrive.
- By integrating with broader place-based efforts, HV can help communities better serve all children.
- Reach out to community initiatives, work to develop multi-sector, community-wide systems, and firmly root your HV programs in these broader efforts for children and families.
- Use shared resources/ shared framing for better linkage and alignment across services and systems.
- Work to connect the dots: align state and community early childhood systems change initiatives for better outcomes.

Help Me Grow Western Summit



Lorrie Grevstad RN MN

Regional Project Officer, Region X, Seattle

Division of Home Visiting and Early Childhood
Systems

Maternal Child Health Bureau

Health Resources and Services Administration

Department of Health and Human Services

lgrevstad@hrsa.gov

206-615-3891