

Help Me Grow Florida

Training Tools for Early Care and Healthcare Professionals

Help Me Grow Florida

Katherine Suarez Espinosa, Ed.S., State Coordinator

Liliana G. Murphy, State Program and Research Manager

May 23, 2016



Purpose of Trainings



Training were developed to facilitate outreach efforts to inform Healthcare and Early Care Education Professionals about the importance of:




- Developmental Milestones
- Screenings
- The Help Me Grow System

Trainings

Developed by the Help Me Grow National Team led by Joanna Bogin, Becky Karush, Sara Sibley and Carlotta Schechter with input and guidance from our Help Me Grow Florida Healthcare and Early Care training subcommittees






Healthcare	Early Care
Jeffrey Brosco M.D., Ph.D	Alisa Ghazvini, ELC
Mary Pavan, M.D.	Danielle De Castro, ELC Duval
Peter Gorski, M.D.	Ellie Schrot, Early Steps
	Jennifer Safstrom, HMG SCO
	Katherine Suarez Espinosa, HMG SCO
	Padma Rajan, ELC Duval
	Sharon Carnahan, Ph.D. Rollins College

Available on the HMG National Affiliate Website






-  01 Early Care and Education Professional...
-  02 Healthcare Professionals Training Mat...
-  Elevator Speeches

Training CD Contents

ECE PROFESSIONALS

-  ECE Professionals Training_Supplemental...
-  2015-06-24 10.08 Training Webinar_Pilot...
-  ECE HMG Training FINAL
-  ECE HMG Training SHORT VERSION FINAL
-  ECE PRETEST_POSTTEST_EVALUATION

HEALTH CARE PROFESSIONALS

-  Healthcare Professionals Trainings Suppl...
-  2015-06-25 10.09 Training Webinar_Pilot...
-  Healthcare Professionals HMG Training F...
-  Healthcare Professionals HMG Training S...
-  Healthcare Professionals PRETEST_POSTT...

Trainings include: Full and short PowerPoints; Pre and Post Evaluations; Supplemental materials; and webinar recordings.

ECE Training



Help Me Grow Florida for Early Care & Education Professionals

Early Detection and Connecting Children to Supports

ADD PRESENTER'S NAME, DATE AND/OR EVENT



Funding provided by the State of Florida Office of Early Learning (OEL). Materials may not be altered without prior written consent of OEL.

11



Understanding **developmental milestones** helps you support all children and detect challenges.



Regular **developmental screening** for all children is a vital tool for supporting a child's growth and for identifying challenges.



Help Me Grow is available to connect children to services and supports for developmental, behavioral, and/or learning challenges.

12

Full Training: 27 slides
Short Training: 18 slides

Developmental Milestones in all Domains

**Social/
Emotional**

**Communication/
Language**

Cognitive

**Motor/
Physical**



Hi! I'm 9 months old. I reach new milestones at every age. **Right now I may be clingy with familiar adults and I have favorite toys.** **I understand "no."** **I use my fingers to point at things.** I look for things I see you hide, and I like to play peek-a-boo. **I can get into sitting position and I really dig pulling myself to standing.** (And I'm super cute.)

Developmental Milestones in Action!

**18-Month-Old
Developmental Milestones**
from *Help Me Grow* Minnesota



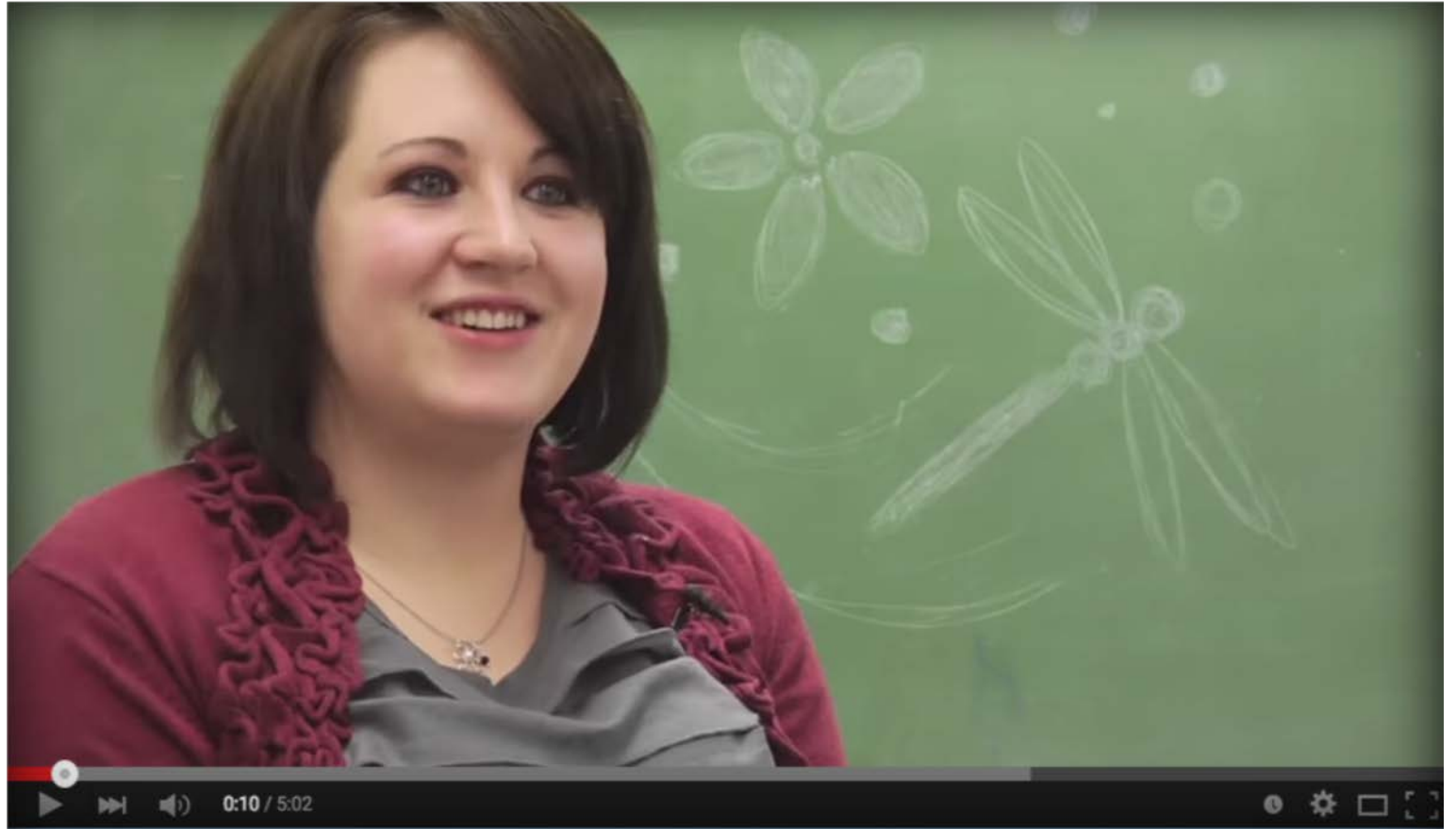
www.helpmegrowmn.org

<https://www.youtube.com/watch?v=vjt-axomdBE>

How *Help Me Grow*...helps!

Help Me Grow Washington: A Parent's Story

This 5-minute video tells the story of a mother and daughter's experience with *Help Me Grow* in Washington State.



<http://www.parenthelp123.org/child-development/help-me-grow-washington>

Developmental Milestones and Standards

Standards help us know what to be working on with children at each age and when to be concerned if a child is not progressing as expected.



How 2-1-1/Help Me Grow works for....

Jacob at a child care center

CHILD Jacob

AGE 2 years old

PROGRAM

Infant/toddler
child care center

LAST SCREENING

On entering the program

CONCERN

Language

CONCERN RAISED BY

Teacher/caregiver as a result of
routine universal screening
(ASQ-3 results indicated
further evaluation for speech & language)



Follow-up for Jacob, Noah, & Sofia

Jacob: parents call *Help Me Grow* / connection to early intervention

Noah: teacher calls *Help Me Grow* / connection to behavioral counseling

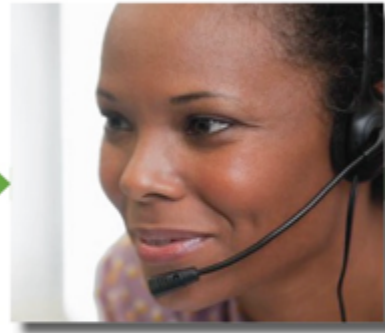
Sofia: parents call *Help Me Grow* / connection to ASQ monitoring and local parent support groups



Introducing... Help Me Grow!



Families, teachers,
health care providers



Help Me Grow
Care Coordinators



Community services
and information

Help Me Grow is a free, confidential service for early identification of developmental and educational concerns that links children and their families to community-based services and supports.

Sponsored by the Florida Developmental Disabilities Council, Inc. and The Florida Department of Education, Office of Early Learning

18

‘ve touched on developmental milestones and screening, let’s look at **Help Me Grow** – our third and final topic.

ow is a free, confidential service. The central component is a call center. The care coordinators at the call center are specially trained to take the calls of parents and health care providers about children’s health, development, behavior or learning. They are knowledgeable about community services and specially skilled at connecting families to these services.

ow is part of a national initiative that is designed to identify children (ages 0-8 years) at-risk for developmental or behavioral challenges, and connect them with community-based programs for health and developmental services. This system is designed to support the questions and concerns of families and providers. It also supports families with health or developmental concerns.

ow Florida is an affiliate of the Help Me Grow National Network, a group of more than 20 states implementing Help Me Grow systems in operation since 1998.

elp Me Grow is funded through by the legislature through the Department of Education Office of Early Learning and the Florida Developmental Disabilities Council. Local programs (such as Miami and Hillsborough) are funded through their local Children Services Councils.

Learn More about Early Detection and Screening

Learn the Signs. Act Early

Trainings on Developmental Milestones

AgesandStages.com

Brookes Publishing

Publisher of the ASQ

ZERO TO THREE

Resources for Learning about Child Development

Birth to 5, Watch Me Thrive

An Early Care & Education Provider's Guide for Developmental and Behavioral Screening

Birth to 5: Watch Me Thrive!

Guide to Milestones and Screening

Resources: Handouts



What is *Help Me Grow*?

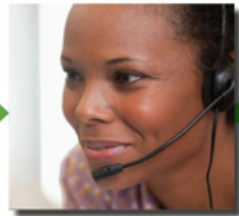
Help Me Grow is part of a national initiative that is designed to identify children (ages 0-8 years) at-risk for developmental or behavioral challenges, and connect them with community-based programs for health and developmental services. This system is designed to support the questions and concerns of families and providers. It also supports early detection for health or developmental concerns.

The goal of *Help Me Grow* Florida is to promote healthy development for every child in Florida.

The central component of *Help Me Grow* Florida is a call center. The care coordinators at the call center are specially trained to take the calls of parents, teachers, or health care providers about children's health, development, behavior or learning. They are knowledgeable about community services and facilitate connecting families and their children to these services.



Families, teachers,
health care providers



Help Me Grow
Care Coordinators



Community services
and information

Help Me Grow is a system for early identification of developmental, behavioral, educational and health concerns that links children and their families to community-based services and supports.

Who Can Use *Help Me Grow*?

- You can! Early care and education professionals
- Child health providers
- Parents, guardians or caregivers
- Social service providers

Call 2-1-1 and ask for *Help Me Grow*



How to Use *Help Me Grow*

When you identify a concern or want more information about a child's development, you can contact *Help Me Grow* in any of the following ways.

CALL 2-1-1 and ask for *Help Me Grow*

INSTRUCT a family to call 2-1-1/*Help Me Grow* during a visit or meeting

FAX or EMAIL a referral form to *Help Me Grow*

VISIT our website for more information at www.helpmegrowfl.org

Why Should I Call?

- If you have questions about a child's development, behavior, health or learning
- If you see a need for parenting education, such as info on developmental milestones
- If you see a need for more family support
- If you need assistance to access services and supports
- If the child needs a developmental screening
- If a screening identifies a developmental, behavioral, or learning concern and a child or family needs a connection to resources

Who Will Answer My Call?

Trained and professional *Help Me Grow* Care Coordinators will answer your call.

- Care Coordinators are caring and patient.
- They have been specially trained to work with families.
- Through teleinterpreters, they can work with many languages.
- They will find appropriate services and supports for children/families.
- They will stay in touch until families are successfully connected to those services and supports.

Call 2-1-1 and ask for *Help Me Grow*

PRE-TEST	Strongly Agree	Somewhat Agree	Somewhat Disagree	Strongly Disagree
I can explain the importance of developmental surveillance and screening.	X	X	X	X
I can talk to a parent about the importance of developmental screening.	X	X	X	X
I can share the results of a screening with a child's family.	X	X	X	X
I understand how <i>Help Me Grow</i> can support my patients and me.	X	X	X	X
I understand the different ways I can make a referral to <i>Help Me Grow</i> .	X	X	X	X

POST-TEST	Strongly Agree	Somewhat Agree	Somewhat Disagree	Strongly Disagree
I can explain the importance of developmental surveillance and screening.	X	X	X	X
I can talk to a parent about the importance of developmental screening.	X	X	X	X
I can share the results of a screening with a child's family.	X	X	X	X
I understand how <i>Help Me Grow</i> can support my patients and me.	X	X	X	X
I understand the different ways I can make a referral to <i>Help Me Grow</i> .	X	X	X	X

Help Me Grow Florida Training for → → → → → Name _____
 Early-Care-and-Education-Professionals

EVALUATION	Strongly Agree	Somewhat Agree	Somewhat Disagree	Strongly Disagree
The information was clear.	X	X	X	X
The information was relevant to my work.	X	X	X	X
The presenter was engaging.	X	X	X	X
My questions were answered.	X	X	X	X

Healthcare Professional Training



Help Me Grow Florida for Health Care Professionals

Developmental Monitoring & Connecting Children to Local Services

ADD PRESENTER'S NAME, DATE AND/OR EVENT

SPONSORED BY THE FLORIDA DEVELOPMENTAL DISABILITIES COUNCIL, INC. AND THE FLORIDA DEPARTMENT OF EDUCATION, OFFICE OF EARLY LEARNING

1

- ★ Developmental surveillance and screening are integral to well-child care for the first 8 years of life.
- ★ AAP recommends the use of surveillance at all well-child visits and the use of a formal screening tool at 9, 18 and 24(30) month well child visits.
- ★ When concerns are identified for children ages birth through age 8, call 2-1-1 and ask for Help Me Grow, a free service.
- ★ Help Me Grow helps you connect children to the community-based services and supports they need.

Full Training: 24 Slides
Short Training: 15 Slides

Training Curriculum Topics

- Importance of Early Detection
- Surveillance and Screening
- AAP Recommendation
- How to use HMG
- Introduction to Common Screening Tools
- Becoming a Physician Champion

Trainings have been used at-

- Medical Conferences
- Meetings
- In-office trainings

Help Me Grow & Your Services

Does your practice offer developmental screenings?

YES

- Database of referrals and community resources
- Follow up assistance for families to connect to services
- Enrollment assistance for families to access services
- Information about parenting, child wellness and other topics
- Training for staff
- Maintenance of certification credits

NO

EVERYTHING that was mentioned PLUS...

- Help incorporating surveillance in well-child visits
- Assistance in conducting developmental screenings
- Support in establishing a formal screening process

Who can I refer to *Help Me Grow* ? 3 Examples

Talking with mom and dad, you learn that they aren't comfortable reading to their son, even though they would like to. "Can I help them?" you think.

YES! Call 2-1-1 and ask for *Help Me Grow*. HMG Care Coordinators can connect mom & dad to family supports and parenting assistance.



At the end of an appointment, a mom mentions that her son has been kicked out of preschool for behavior. "Can you help me?" she asks.

YES! Call 2-1-1 and ask for *Help Me Grow*. HMG Care Coordinators can connect mom to supports for her son's behavioral issues.

A dad is concerned by his daughter's frustration when she tries to speak—and nothing he does seems to help her. "Can you help me?" he asks.

YES! Call 2-1-1 and ask for *Help Me Grow*. HMG Care Coordinators can connect the family to language & communication services.

Research shows it takes an average of

7 to 8 calls

to get a service in place for a family.

**HMG does that work
for the family and you.**

Help Me Grow is FREE and CONFIDENTIAL!



Ages & Stages Questionnaire-3 (ASQ-3)



Agesandstages.com

This training also covers the ASQ:SE2 and PEDS

- ★ 1 month to 66 months
- ★ 10-20 minutes to complete, 2-3 minutes to score
- ★ Available in English and Spanish
- ★ One-time purchase and available online



16 Month ASQ-3 Information Summary

15 months 0 days through
16 months 30 days

Child's name: Annie M. Roberts Date ASQ completed: 9/20/2008
 Child's ID #: 36759111023412358 Date of birth: 5/5/2007
 Administering program/provider: Jonestown Child Care Center Was age adjusted for prematurity when selecting questionnaire? Yes No

1. SCORE AND TRANSFER TOTALS TO CHART BELOW: See ASQ-3 User's Guide for details, including how to adjust scores if item responses are missing. Score each item (YES = 10, SOMETIMES = 5, NOT YET = 0). Add item scores, and record each area total. In the chart below, transfer the total scores, and fill in the circles corresponding with the total scores.

Area	Cutoff	Total Score	0	5	10	15	20	25	30	35	40	45	50	55	60
Communication	16.81	55	●	●	●	●	●	●	●	●	●	●	●	●	●
Gross Motor	37.91	40	●	●	●	●	●	●	●	●	●	●	●	●	●
Fine Motor	31.98	40	●	●	●	●	●	●	●	●	●	●	●	●	●
Problem Solving	30.51	45	●	●	●	●	●	●	●	●	●	●	●	●	●
Personal-Social	26.43	50	●	●	●	●	●	●	●	●	●	●	●	●	●

2. TRANSFER OVERALL RESPONSES: Bolded uppercase responses require follow-up. See ASQ-3 User's Guide, Chapter 6.

- | | | | |
|--|---|--|---|
| 1. Hears well?
Comments: | <input checked="" type="radio"/> YES <input type="radio"/> NO | 6. Concerns about vision?
Comments: | YES <input type="radio"/> NO <input checked="" type="radio"/> |
| 2. Talks like other toddlers his age?
Comments: | <input checked="" type="radio"/> YES <input type="radio"/> NO | 7. Any medical problems?
Comments: | YES <input type="radio"/> NO <input checked="" type="radio"/> |
| 3. Understand most of what your child says?
Comments: | <input checked="" type="radio"/> YES <input type="radio"/> NO | 8. Concerns about behavior?
Comments: | YES <input type="radio"/> NO <input checked="" type="radio"/> |
| 4. Walks, runs, and climbs like other toddlers?
Comments: | <input checked="" type="radio"/> YES <input type="radio"/> NO | 9. Other concerns?
Comments: | YES <input type="radio"/> NO <input checked="" type="radio"/> |
| 5. Family history of hearing impairment?
Comments: | YES <input type="radio"/> NO <input checked="" type="radio"/> | | |

3. ASQ SCORE INTERPRETATION AND RECOMMENDATION FOR FOLLOW-UP: You must consider total area scores, overall responses, and other considerations, such as opportunities to practice skills, to determine appropriate follow-up.

If the child's total score is in the area, it is above the cutoff, and the child's development appears to be on schedule.
 If the child's total score is in the area, it is close to the cutoff. Provide learning activities and monitor.
 If the child's total score is in the area, it is below the cutoff. Further assessment with a professional may be needed.

4. FOLLOW-UP ACTION TAKEN: Check all that apply.

- Provide activities and rescreen in ____ months.
- Share results with primary health care provider.
- Refer for (circle all that apply) hearing, vision, and/or behavioral screening.
- Refer to primary health care provider or other community agency (specify reason): _____
- Refer to early intervention/early childhood special education.
- No further action taken at this time
- Other (specify): _____

5. OPTIONAL: Transfer item responses (Y = YES, S = SOMETIMES, N = NOT YET, X = response missing).

	1	2	3	4	5	6
Communication	Y	Y	Y	Y	Y	S
Gross Motor	Y	S	Y	Y	S	N
Fine Motor	S	Y	Y	Y	S	N
Problem Solving	S	S	Y	Y	S	Y
Personal-Social	Y	Y	Y	N	Y	Y

P101160700

Ages & Stages Questionnaires®, Third Edition (ASQ-3™), Squires & Bricker
© 2009 Paul H. Brookes Publishing Co. All rights reserved.

Barriers to Surveillance & Screening...

...and How *Help Me Grow* Eases Them

Lack of system for linkage to community-based referral resource



Help Me Grow is a FREE service that links children to community-based resources

No time to learn the range of resources available



Help Me Grow maintains a comprehensive, up-to-date resource directory

Unfamiliarity with screening tools



Help Me Grow can provide trainings on screening tools

Help Me Grow Physician Champions



Credibility. Authority. Connection.

- Facilitate outreach trainings at doctors' offices
- Promote *Help Me Grow* to physician community
- Present at state medical meetings, including the American Academy of Pediatrics (AAP), about the *Help Me Grow* system



Call 2-1-1 and ask for Help Me Grow to learn more.

Help Me Grow & Maintenance of Certification

You can earn Part 4 Maintenance of Certification credits for surveillance, screening and using *Help Me Grow* to connect children to evaluation and intervention services.

- 6-month chart audit activity approved by the American Board of Pediatrics that can be completed by office staff
- One or all pediatricians in the practice receive credits
- Cost is \$50 and contact Sara Sibley at Connecticut Children's Medical Center (Smartel@connecticutchildrens.org) to enroll

Resources



Help Me Grow Resources for Healthcare Professionals

Sample ASQ & Resources

- Sample ASQ-3
<http://agesandstages.com/wp-content/uploads/2015/02/asq-3-16-month-sample.pdf>
- ASQ Online
<http://agesandstages.com/products-services/asq-online/>
- More ASQ Resources
<http://agesandstages.com/>

Sample PEDS & Resources

- Sample PEDS
<https://www.dropbox.com/s/16cvrfc0gqj4z66/PEDS%20sample%20forms.pdf?dl=0>
- PEDS Online
<http://www.pedstest.com/OnlineScreening.aspx>
- More PEDS Resources
<http://www.pedstest.com/default.aspx>

Other Developmental Screening Tools

- M-CHAT Resources
<https://www.m-chat.org/>
- Sample ASQ:SE-2
http://agesandstages.com/wp-content/uploads/2015/03/asqse_english_48_month_sample.pdf
- Pediatric Symptom Checklist
http://www.massgeneral.org/psychiatry/services/psc_home.aspx

Research on investing in early childhood development

Invest in early childhood development: Reduce deficits, strengthen the economy (Heckman)
<http://heckmanequation.org/content/resource/invest-early-childhood-development-reduce-deficits-strengthen-economy>

Research on early brain development

AAP Early Brain and Child Development
<https://www.aap.org/en-us/advocacy-and-policy/aap-health-initiatives/EBCD/Pages/default.aspx>

Call 2-1-1 and ask for *Help Me Grow*

Sponsored by the Florida Developmental Disabilities Council, Inc., and the Florida Department of Education, Office of Early Learning



Detection Rates of Developmental Disabilities

Washington AAP Developmental Screening Orientation Webinar
http://wcaap.org/_storage/532a03838cbc4.pdf

AAP Statement on Developmental Screening & Surveillance

Identifying Infants and Young Children with Developmental Disorders in the Medical Home
<http://pediatrics.aappublications.org/content/118/1/405.full>

Policy Brief on Help Me Grow and Reduced Healthcare Costs

Cost Benefits of "De-medicalizing" Childhood Developmental and Behavioral Concerns: National Replication of *Help Me Grow*
<http://www.helpmegrownational.org/pages/research-article.php?ArticleId=14&CatId=7>

Identifying Protective Factors

The Strengthening Families Protective Factors Framework
<http://www.cssp.org/reform/strengtheningfamilies/about#protective-factors-framework>

Resources to Support Developmental Surveillance & Screening

BRIGHT FUTURES GUIDELINES
...are a culmination of the most respected recommendations for the top 10 areas of child development. Along with presenting the most up-to-date information on preventive screenings and services by visit, the Guidelines provides visit-by-visit anticipatory guidance for health care providers.

Bright Futures Guidelines
<https://brightfutures.aap.org/materials-and-tools/guidelines-and-pocket-guide/Pages/default.aspx>

The **Bright Futures Pocket Guide** serves as a quick reference tool. It includes guidance on health visit priorities, developmental observation, physical exam, screening, and more.
https://brightfutures.aap.org/Bright%20Futures%20Documents/BF3%20pocket%20guide_final.pdf

BIRTH TO 5: WATCH ME THRIVE!
...is a federal effort to encourage healthy child development, universal developmental and behavioral screening for children, and support for the families and providers who care for them.

Birth to 5: Watch Me Thrive!
<http://www.acf.hhs.gov/programs/ecd/child-health-development/watch-me-thrive>

Primary Care Provider's Guide
https://www.acf.hhs.gov/sites/default/files/ecd/pcp_screening_guide_march2014.pdf

Call 2-1-1 and ask for *Help Me Grow*

Sponsored by the Florida Developmental Disabilities Council, Inc., and the Florida Department of Education, Office of Early Learning



LEARN THE SIGNS. ACT EARLY.

...is a developmental monitoring service from the Centers for Disease Control.

Learn the Signs. Act Early
<http://www.cdc.gov/ncbddd/actearly/index.html>

Watch Me! Celebrating Milestones and Sharing Concerns
<http://www.cdc.gov/ncbddd/watchmetraining/index.html>

ZERO TO THREE

...is a national nonprofit organization that provides parents, professionals and policymakers the knowledge and the know-how to nurture early development.

Zero to Three
<http://www.zerotothree.org/child-development/>

Brain Development information
<http://www.zerotothree.org/child-development/brain-development/>

Promoting Social Emotional Development (tools for families to track child development)
<http://www.zerotothree.org/child-development/social-emotional-development/>

ADDITIONAL WEBSITES

Brookes Publishing (publisher of the ASQ)
<http://www.brookespublishing.com/resource-center/screening-and-assessment/>

CDC Developmental Monitoring and Screening for Health Professionals
<http://www.cdc.gov/ncbddd/childdevelopment/screening-hcp.html>

Developmental Screening Tool Kit
<http://www.developmentalscreening.org/>

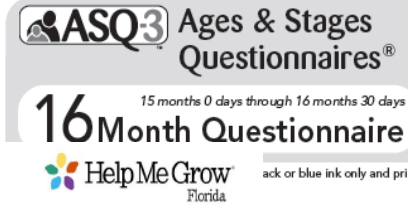
More Resources

- **Help Me Grow National Center**
www.helpmegrownational.org
- **Help Me Grow Florida Facebook**
<https://www.facebook.com/HelpMeGrowFlorida>
- **Systems of Care: A Framework for System Reform in Children's Mental Health**
<http://gucchd.georgetown.edu/products/SOCIssueBrief.pdf>
- **AAP Section on Developmental and Behavioral Pediatrics**
<http://www2.aap.org/sections/dbpeds/index.asp>

Call 2-1-1 and ask for *Help Me Grow*

Sponsored by the Florida Developmental Disabilities Council, Inc., and the Florida Department of Education, Office of Early Learning

Resources



ack or blue ink only and print

Middle initial: **M.** Child's last name: **Roberts**

If child was born 3 or more weeks prematurely, # of weeks premature: _____ Child's gender: Male Female

Middle initial: **M.** Last name: **Roberts**

Relationship to child: Parent Guardian Teacher Child care provider
 Grandparent or other relative Foster parent Other: _____

State/Province: **IN** ZIP/Postal code: **61924**

Home telephone number: **219-888-0021** Other telephone number: **219-912-2100**

@email.com

412358 Age at administration in months and days: **16 months, 15 days**

183664 If premature, adjusted age in months and days: _____

Child Care Center

Stages Questionnaires®, Third Edition (ASQ-3™), Squires & Bricker © 2009 Paul H. Brookes Publishing Co. All rights reserved.



Help Me Grow Maintenance of Certification Introduction

What is Maintenance of Certification?

Overview

The American Board of Pediatrics (ABP) recognizes the efforts of board certified pediatricians who imbed quality improvement in their day-to-day practice of medicine. As part of Maintenance of Certification (MOC), quality improvement (QI) projects that meet standards set by the ABP can apply for approval by the ABP. If the QI project is approved, physician participants are eligible for credit toward maintenance of their ABP certification.

MOC consists of four primary parts, and pediatricians need to complete all of them every 7 years:

- Part 1: Evidence of professional standing
- Part 2: Evidence of lifelong learning and self-assessment
- Part 3: Evidence of cognitive expertise
- Part 4: Evidence of satisfactory performance in practice (pediatricians need to complete 2 activities in this area in each recertification cycle)

Help Me Grow National Center, in collaboration with the Child Health and Development Institute of Connecticut and Connecticut Children's Medical Center's Office of Continuing Medical Education, has developed a new American Board of Pediatrics approved, Part 4 Credit Quality Improvement Project for primary care practices interested in evaluating their practices of developmental surveillance, developmental screening, and using Help Me Grow to connect young children to intervention services.

Help Me Grow MOC Project Description

The American Academy of Pediatrics recommends developmental surveillance at all of the 14 recommended well-child visits for children birth through age five. The AAP also recommends developmental screening with a standardized tool at the 9, 18 and 30 (or 24) month visits. Help Me Grow National Center, the Child Health and Development Institute of Connecticut and Connecticut Children's Medical Center's Office of Continuing Medical Education have collaborated to offer an American Board of Pediatrics-approved, Part 4 Credit Quality Improvement Project for primary care practices interested in evaluating their practices of developmental surveillance, developmental screening, and connecting children to evaluation and intervention services using Help Me Grow.

The Help Me Grow Quality Improvement Project is a chart-audit based quality improvement project. Participating primary care practices collect 6 months of chart audit data and enter the data into an online database. No patient identification information is included in the data submission. Participating providers review monthly progress reports and participate in quality improvement activities with the goal of improving identification of children at risk for poor developmental outcomes and using Help Me Grow to connect families with evaluation and intervention services.

POLICY BRIEF

Help Me Grow® National Center • Hartford, Connecticut.

Cost Benefits of "De-medicalizing" Childhood Developmental and Behavioral National Replication of Help Me Grow

A costly lack of options

During two-year old Shana's routine checkup, her mother expresses concerns over her daughter's ongoing behavior. The mother describes Shana as very strong-willed, easily upset, and also reports episodes resembling spells. The pediatrician refers the mother to a local neurologist. Two months later, at the earliest possible receives a neurological examination that is unhelpful for Shana's behaviors. She is then referred for an EEG possibility of a seizure disorder. After a total of almost a year total several thousand dollars. Over Shana's behavioral problems persist, causing her to enroll in a special education program where parents pay for her to manage her outbursts.

The above vignette reflects many of the realities in the management of behavioral and developmental concerns. Children rely too heavily on costly and oversubscribed medical specialists, while community-based programs and services are underutilized. The National Center for Children in Poverty reported, in 2008, that "despite overwhelming evidence supporting early treatment intervention services, funding is heavily focused on intensive services." While pediatric special services, long wait times and limited capacity result from underutilized in Child health providers and parents are too often ill-equipped use of the vast array of community-based resources designed to address early childhood behavioral and developmental challenges. Tertiary care (i.e., specialty) referrals, there are more readily available community alternatives.

Excerpted from PEDIATRICS, Vol. 118 No. 1 July 1, 2006 pp. 405-420

POLICY STATEMENT

Identifying Infants and Young Children With Developmental Disorders in the Medical Home: An Algorithm for Developmental Surveillance and Screening

Council on Children With Disabilities
Section on Developmental Behavioral Pediatrics
Bright Futures Steering Committee
Medical Home Initiatives for Children With Special Needs Project Advisory Committee

Perform Developmental Surveillance
Developmental surveillance is a flexible, longitudinal, continuous, and cumulative process whereby knowledgeable health care professionals identify children who may have developmental problems. Surveillance can be useful for determining appropriate referrals, providing patient education and family-centered care in support of healthy development, and monitoring the effects of developmental health promotion through early intervention and therapy.

A great breadth and depth of information is considered in comprehensive developmental surveillance; it is important to note, however, that much of this information (eg, static risk factors such as low birth weight, results of previous screenings) will accumulate within the child's health record, where it can be reviewed and flagged as necessary before the visit. There are 5 components of developmental surveillance:

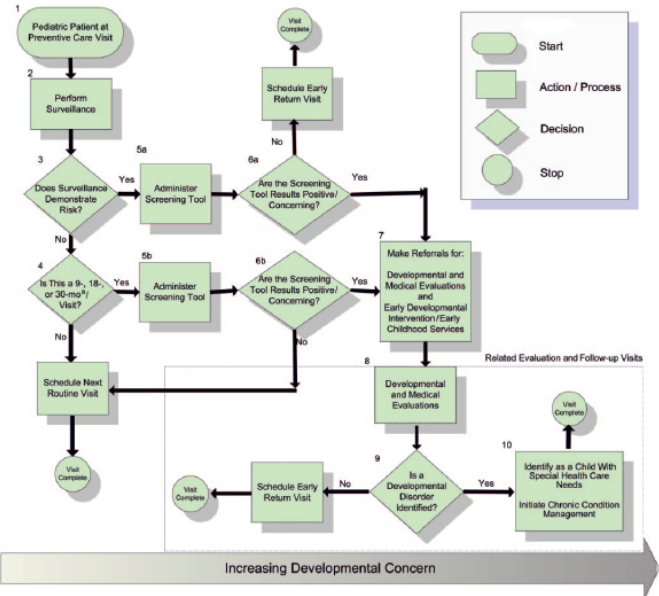


FIGURE 1
Developmental surveillance and screening algorithm within a pediatric preventive care visit. *Because the 30-month visit is not yet a part of the preventive care system and is often not reimbursable by third-party payers at this time, developmental screening can be performed at 24 months of age.

2015-06-25 10:09 Training Webinar_Pilot for Help Me Grow-FL Child Health Care Providers

Why Are Surveillance & Screening Part of Pediatric Care?



Sponsored by the Florida Developmental Disabilities Council, Inc. and The Florida Department of Education, Office of Early Learning

3

01:55



Website Webinars

Service Providers

Help Me Grow Florida collaborates with partners to ensure the best outcomes for children and families.

Trainings

EARLY CARE & EDUCATION PROFESSIONALS

This training is for Early Care & Education professionals. Please complete the following steps and contact us if you have any questions or require further assistance.

Step 1:

Complete the pre-test for this training by clicking here. Please ensure all of your information is provided, as this will be needed to confirm you have completed the training and to send you a certificate of completion. The link is: <http://go.gfl/forms/mrleFgTJA5>

Step 2:

Watch the training module here. Please ensure you watch the complete video.



Step 3:

Complete the post-test for this training by clicking here. Please ensure all of your information is provided, as this will be needed to confirm you have completed the training and to send you a certificate of completion. The link is: <http://go.gfl/forms/AZ2Cht1C1E>

Step 4:

Access and review the supplemental materials which were referenced during the presentation by clicking on the following file links:

			Search: <input type="text"/>
File name	Size	Time	
ECE PRETEST_POSTTEST_EVALUATION.docx	73.90 KB	Jul 30, 2015, 11:30 AM	
ECE HMG Training SHORT VERSION FINAL.pptx	17.03 MB	Jul 30, 2015, 11:28 AM	
Training Webinar_Pilot for Help Me Grow-FL Early Care _ Education Professionals.wmv	23.23 MB	Jul 30, 2015, 11:19 AM	
ECE PRETEST_POSTTEST_EVALUATION.docx	79.95 KB	Jul 17, 2015, 9:40 AM	

Elevator Speeches

- ❖ Healthcare Professionals
- ❖ ECE Professionals
- ❖ Community Providers
- ❖ Families



Help Me Grow Elevator Speech: Healthcare Professionals

Help Me Grow is designed to connect families to information about child development and link them to community resources. Any caregiver, for children birth through age eight, is welcome to dial 2-1-1 and ask for *Help Me Grow*. They can ask specially trained staff questions about their child's development, behavior, health or learning.

As a healthcare professional, you work with so many families that need to be connected to various resources—and not just medical resources. *Help Me Grow* supports you by making referrals and then following up with the families to make sure that they receive the help they need. We also provide parents with a developmental screening tool that helps them understand typical child development.

To strengthen the relationship between you and your patient, we always loop back to you with information from the developmental questionnaires and an update on the connections to services (contingent upon the family's permission). To link a family with our services, dial 2-1-1 and ask for *Help Me Grow* or submit a referral online at www.helpmegrowfl.org.

We offer in-office trainings for all office staff about *Help Me Grow's* care coordination services and/or how to incorporate screenings into your practice. We'd love to support you as you promote healthy child development.

ECE Outreach

Suggestions for connecting with the ECE community:

Partner with your local Early Learning Coalition

Partner with Head Start and the Public School system's ECE programs

Presentations at conferences targeting the ECE population

Visits to individual ECE centers to meet with the director, drop off HMG brochures, and arrange nap time presentations

Connect with your local NAEYC chapter

Presentations at colleges and universities-

Early Childhood Education Department courses



Healthcare Outreach

Connect with your local Chapter of the American Academy of Pediatrics (AAP)

Connect with your local Nurse Practitioner Council

Arrange presentations at Universities' Medical Schools and Nursing Programs

Establish relationships with local hospitals

- Birthing units
- Children's Hospitals/Units
- Hospital Social Workers

Visit Community Health Clinics

Visit individual Pediatricians and Family Practitioners



Affiliates' Terms of Use of Florida Curriculum

The Florida Curriculum may be found on the Affiliate section of the Help Me Grow National website.

Terms of Use:

- National Network affiliates may use the materials or selections thereof in their original form.
- The materials may not be adapted in any way without prior written permission from the Florida Developmental Disabilities Council.
- Sponsoring language/credit should be included: giving credit to the State of Florida Office of Early Learning.
- Materials shall be used for non-commercial activities and can be reproduced at cost, but not for profit. Materials are not sold or used for financial gain by any party.

Please contact Katherine S. Espinosa at katherinese@fddc.org if you have any questions

Q & A



Contacts

Katherine Suarez Espinosa, HMG Florida State
Coordinator: katherinese@fddc.org

Liliana G. Murphy, Help Me Grow State Program and
Research Manager : lilianag@fddc.org

Florida Developmental Disabilities Council, Inc. (FDDC)
(800) 580-7801

